

HEDGE TRIMMERS

A Cut Above the Rest!

For professionals who demand performance, ECHO Hedge Trimmers deliver. They're tough, reliable and loaded with features including a throttle lock-out to help prevent accidental blade engagement, commercial-grade gear cases and cutting blades for the heaviest applications, and vibration-reducing engine mounts and padded handles for operator comfort. Every double-sided hedge trimmer uses ECHO-exclusive, laser cut and precision ground RazorEdge™ blades. All ECHO Hedge Trimmers are backed by a 5-year consumer and 2-year commercial warranty.



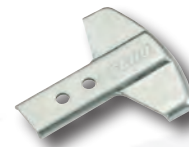
ECHO Hedge Trimmer Features and Benefits

- A** Tool-less air filter cover for easy access
- B** Commercial-grade felt air filter for improved filtration
- C** Purge bulb for easy starting
- D** i-30™ starting system for easy starting
- E** RazorEdge™ laser-cut, double-reciprocating blades for long-lasting sharpness
- F** Blade design with three cutting edges for efficient clean cuts
- G** Grease-able gear case for easy maintenance and longer life
- H** Rigid support bars for straighter and more precise cuts
- I** Tip guard prevents blade contact with buildings, fences or the ground for operator safety
- J** Front hand safety guard for preventing accidental contact with blades
- K** 5-position rotating handle for a variety of cutting positions
- L** Vibration-reduction system isolates front and rear handles from engine and gearcase/blade vibration for operator comfort
- M** Front and rear handles with rubber over-mold for increased comfort and control



Protecting your Hedge Trimmer

All ECHO Hedge Trimmers feature a Tip Guard to protect the blades from contact with buildings, fences or the ground. It does not interfere with blade performance.



Tip Guard

For model HC-150/155 and all SHC Models
Part #99988802000

For model HC-265
Part #99988802010

For all single-sided models
Part #99988802020

For model HC-165/185
Part #99988802030

Hedge Trimmer Specification Chart pg. 27



HC-150

High-performing 20" hedge trimmer.

- 21.2 cc professional-grade, 2-stroke engine
- 20" RazorEdge™ blades

A B C D E F G H I J



HC-155

Improved features and 24" blade length.

- 21.2 cc professional-grade, 2-stroke engine
- 24" RazorEdge™ blades
- Re-designed ergonomic rear handle
- Improved gear box

A B C D E F G H I J



HC-155-20

Same as the HC-155 with 20" blade length.

- 21.2 cc professional-grade, 2-stroke engine
- 20" RazorEdge™ blades
- Re-designed ergonomic rear handle
- Improved gear box

A B C D E F G H I J



For more information on ECHO Hedge Trimmers including specifications, attachments and accessories, scan this QR code with your smartphone's QR code app.



800-432-ECHO
WWW.ECHO-USA.COM
ONLY PROFESSIONAL GRADE

HEDGE TRIMMERS



HC-165

Versatile rotating handle and 24" blade length.

- 21.2 cc professional-grade, 2-stroke engine
- 24" RazorEdge™ blades
- 5-position rotating handle
- Ergonomic handle with rubber over-mold

A B C D E F G H I J K L M



HC-185

Versatile rotating handle and 30" blade length.

- 21.2 cc professional-grade, 2-stroke engine
- 30" RazorEdge™ blades
- 5-position rotating handle
- Ergonomic handle with rubber over-mold

A B C D E F G H I J K L M



HC-235

Heavy-duty, single-sided performance and 30" blade length.

- 21.2 cc professional-grade, 2-stroke engine
- 30" RazorEdge™ blades
- Vibration-reduction system
- Commercial-duty air filtration

A B C D E F G H I J L



HC-245

Heavy-duty, single-sided performance and 40" blade length.

- 21.2 cc professional-grade, 2-stroke engine
- 40" RazorEdge™ blades
- Vibration-reduction system
- Commercial-duty air filtration

A B C D E F G H I J L M



SHC-225

Comfortable, shafted design and 20" blade length.

- 21.2 cc professional-grade, 2-stroke engine
- 20" RazorEdge™ blades
- 33" shaft length
- Ergonomic handle with rubber over-mold

A B C D E F G H I J L M



SHC-225S

Reduced length, shafted design and 20" blade length.

- 21.2 cc professional-grade, 2-stroke engine
- 20" RazorEdge™ blades
- 20" shaft length
- Ergonomic handle with rubber over-mold

A B C D E F G H I J L M



SHC-266

Extra long-reach, increased power and 20" blade length.

- 25.4 cc professional-grade, 2-stroke engine
- 20" RazorEdge™ blades
- 51" shaft length
- 7° angled shaft to allow operation away from hedge

A B C D E F G H I L M



HCA-266

A 59" shaft for long-reach cutting ability and 180° of operational articulation.

- 25.4 cc 2-stroke engine
- 20" double-sided, double-reciprocating RazorEdge™ blades
- Articulating gear case allows blade adjustment in 15° increments with a total range of 180°

A B C D E F G H I J L M

RAZOR EDGE™ BLADES



i-30™ STARTING SYSTEM



ROTATING HANDLE

