

DGK15FL Generator with Auto Start feature

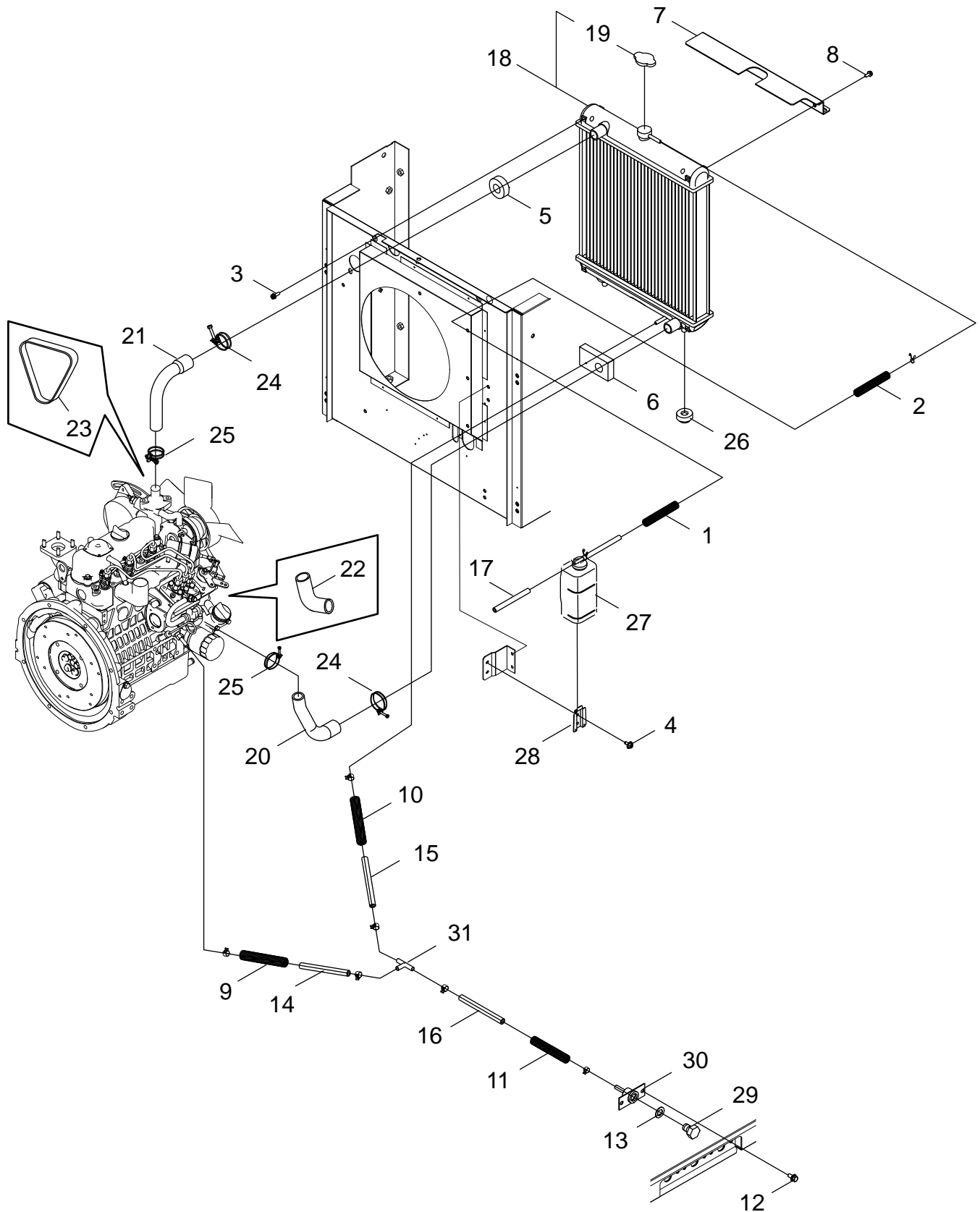


SERIAL NUMBERS

D19701000001 - D19701999999

RADIATOR ASSEMBLY	2	POWER OUTPUT TERMINALS.....	34
MUFFLER ASSEMBLY	4	SHINDAIWA LABELS	36
FUEL TANK	6	ECHO LABELS	38
FUEL LINES, RELATED COMPONENTS.....	8	REAR ENCLOSURE FRAME INSULATION.....	40
OIL LINES	10	ENCLOSURE FRAME FRONT DOOR AND AIR DUCT INSULATION	42
ENCLOSURE FRAME	12	ENCLOSURE FRAME CONTROL BOX DOOR AND AIR DUCT INSULATION	44
ENCLOSURE FRAME	14		
FRONT ENCLOSURE.....	16		
BASE FRAME.....	18		
LEFT ENCLOSURE	20		
RIGHT ENCLOSURE	22		
TOP ENCLOSURE	24		
ENGINE PARTS	26		
ALTERNATOR	28		
MAIN CONTROL PANEL.....	30		
MAIN BREAKER AND CONTROL BOX	32		

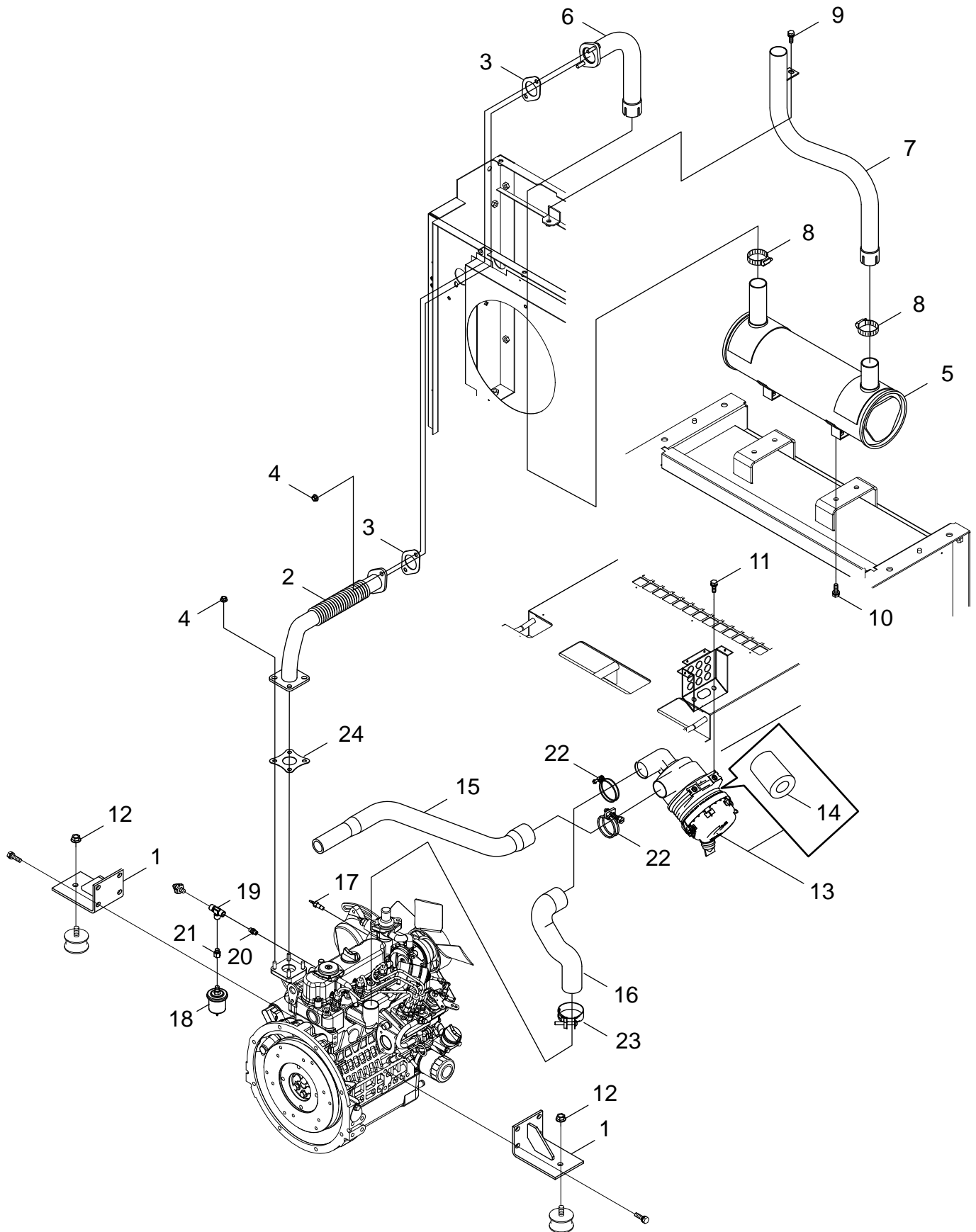
RADIATOR ASSEMBLY



RADIATOR ASSEMBLY

NO.	PART NUMBER	QTY.	DESCRIPTION	
1	V476000270	1	TUBE,13XL200	
2	V475008390	1	TUBE,13XL310	
3	9103606020	2	BOLT SW,M6X20	
4	V204002040	2	BOLT,M6X16	
5	V542000040	1	SEAL,T20X50X25	
6	V542000050	1	SEAL,T10X55X100	
7	J447001590	1	GUARD	
8	V204001610	2	BOLT,M6X165-SPW	
9	V476000190	1	TUBE	
10	V475006000	1	TUBE	
11	V475009780	1	TUBE	
12	V205001420	2	BOLT,M8X20-SPW	
13	6C09058960	1	GASKET	
14	966170400	1	TUBE,7.3X12.5X400	ENGINE - T-JOINT
15	966170700	1	TUBE,7.3X12.5X700	RADIATOR - T-JOINT
16	966170110	1	T-JOINT - COOLANT DRAIN	T-JOINT - COOLANT DRAIN
17	966170460	1	TUBE,7.3X12.5X460	
18	1G31972060	1	ASSY RADIATOR	
19	1721472020	1	RADIATOR CAP	
20	1G31972850	1	HOSE,LOWER WATER	
21	1G31972940	1	HOSE,UPPER WATER	
22	1680572870	1	HOSE,WATER PIPE TO WATER PUMP	
23	1747297010	1	V BELT	
24	931889039	2	HOSE CLAMP	
25	V495000790	2	HOSE CLAMP,09318-8903-0	
26	6C04058580	2	CUSHION	
27	G125000070	1	OVERFLOW TANK	
28	1198272460	1	OVERFLOW TANK MOUNTING BRACKET	
29	1522133750	1	DRAIN PLUG,M12X1.25	
30	1K12533743	1	DRAIN PIPE SOCKET	
31	3N60042170	1	JOINT,TEE TYPE	

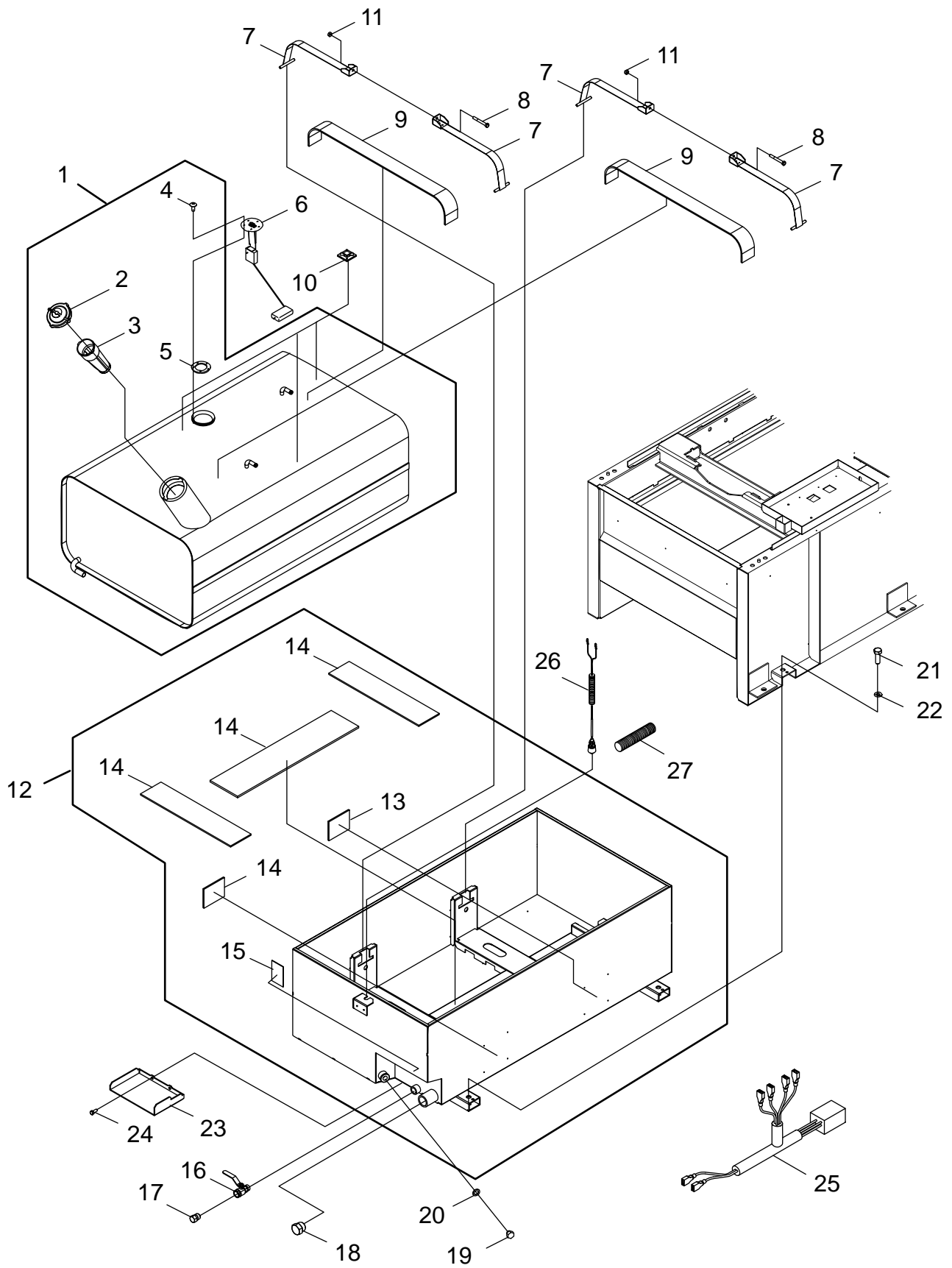
MUFFLER ASSEMBLY



MUFFLER ASSEMBLY

NO.	PART NUMBER	QTY.	DESCRIPTION
1	G121000420	2	ENGINE MOUNT
2	G231000540	1	FLEXIBLE EXHAUST PIPE
3	V104001740	2	EXHAUST GASKET
4	V265000290	6	FLANGE NUT,M8 SERRATED
5	A300001430	1	MUFFLER
6	G231000840	1	PIPE,EXHAUST (MUFFLER IN)
7	G231000850	1	PIPE,EXHAUST (MUFFLER OUT)
8	V495002100	2	CLAMP,WORM DRIVE
9	V205001420	1	BOLT,M8X20-SPW
10	V205001170	4	BOLT,M8X20-SPW
11	V205001170	2	BOLT,M8X20-SPW
12	V268000060	2	FLANGE NUT,M12 SERRATED
13	1G31911012	1	AIR CLEANER ASSY
14	1G31911212	1	+ AIR CLEANER(ELEMENT)
15	1G31911622	1	HOSE,AIR CLEANER IN
16	1G31911640	1	HOSE,AIR CLEANER TO ENGINE
17	G365000041	1	SENSOR,WATER TEMP-U THERMO
18	C100000440	1	OIL PRESSURE SENDING UNIT
19	E232000080	1	TEE,HOSE
20	V187000490	1	NIPPLE
21	K430000060	1	NIPPLE,MALE 1/8
22	931889058	2	HOSE CLAMP
23	1526111720	1	CLAMP,PIPE BAND
24	1526312371	1	EXHAUST GASKET

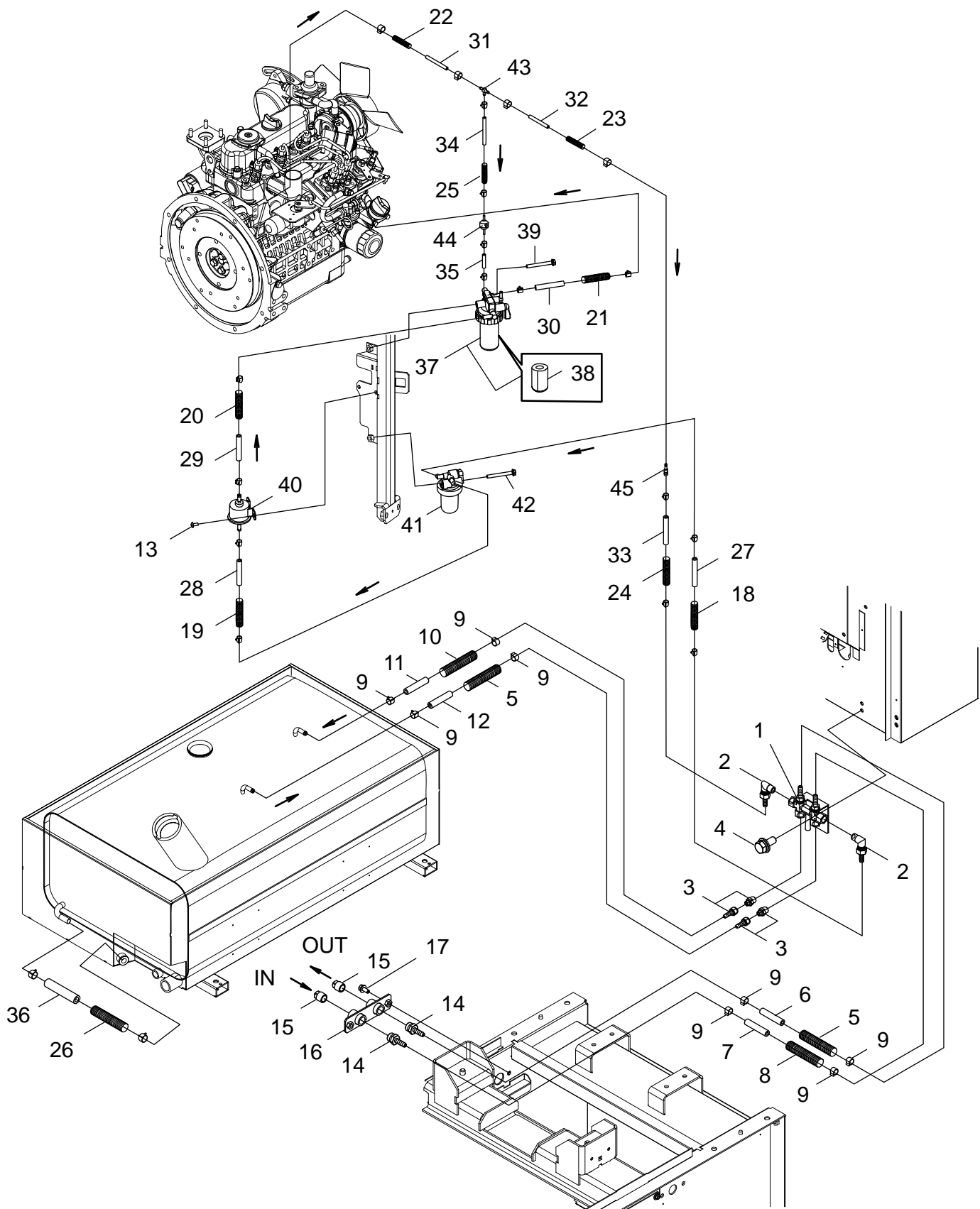
FUEL TANK



FUEL TANK

NO.	PART NUMBER	QTY.	DESCRIPTION
1	G250001300	1	TANK,FUEL
2	G255000010	1	+ TANK CAP
3	A369000160	1	+ STRAINER
4	9156405010	5	+ SCREW,5X10
5	K221000030	1	+ GASKET,FUEL TANK GAUGE
6	E325000080	1	FUEL GAUGE
7	A392000250	4	BAND,FUEL TANK MOUNTING
8	9100208080	2	BOLT,M8X80
9	V420003920	2	CUSHION
10	M416000040	3	ADHESIVE CABLE TIE MOUNT
11	V265000290	2	FLANGE NUT,M8 SERRATED
12	J447002020	1	GUARD
13	V420003050	2	+ PAD
14	V420003930	3	+ CUSHION
15	M700000010	2	+ PAD
16	E265000310	1	VALVE,BALL (WITH HANDLE)
17	E328000330	1	PLUG,1/2" DRAIN
18	E328000340	1	DRAIN PLUG
19	E328000140	1	DRAIN PLUG
20	V106000110	1	SEAL WASHER
21	V207000530	4	BOLT,B-12X20
22	V309000220	4	WASHER,W-12 CIRCULAR
23	J447001850	1	GUARD
24	V205001420	2	BOLT,M8X20-SPW
25	G363001070	1	HARNESS,WIRE
26	G334001360	2	SWITCH
27	V475005870	1	TUBE,19XL90

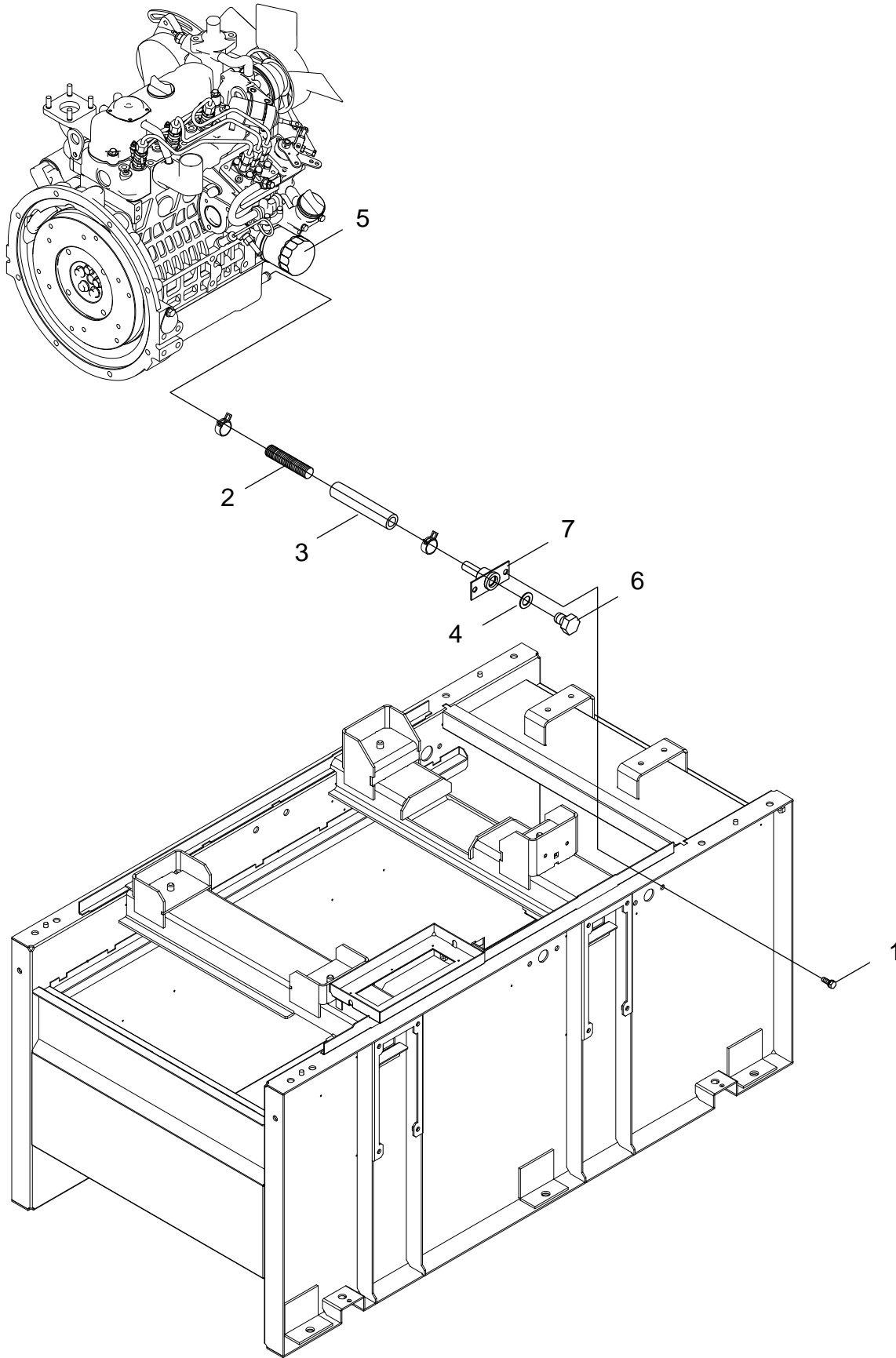
FUEL LINES, RELATED COMPONENTS



FUEL LINES, RELATED COMPONENTS

NO.	PART NUMBER	QTY.	DESCRIPTION	
1	E265000121	1	VALVE	
2	E237000140	2	ELBOW	
3	V187000290	2	NIPPLE,R3/8 -G3/8 HOSE	
4	V204002040	2	BOLT,M6X16	
5	V475005920	2	TUBE,19.5X23.8X700	
6	K401000600	1	HOSE,9XL750	3-WAY VALVE - OUTER FUEL INLET/OUTLET
7	K401000560	1	HOSE	OUTER FUEL INLET/OUTLET - 3-WAY VALVE
8	V475008290	1	TUBE	
9	V495001660	8	HOSE CLAMP	
10	V475005520	1	TUBE	
11	K401000290	1	HOSE	3-WAY VALVE - FUEL TANK
12	K401000600	1	HOSE,9XL750	FUEL TANK - 3-WAY VALVE
13	90021606014	2	SCREW,M6X14	
14	V187000110	2	NIPPLE,G1/2 HOSE	
15	E328000110	2	DRAIN PLUG	
16	C153000560	1	SOCKET,G1/2 - G1/2	
17	V205001420	2	BOLT,M8X20-SPW	
18	V476000180	1	TUBE	
19	V476000290	1	TUBE	
20	V476000330	1	TUBE	
21	V475008390	1	TUBE,13XL310	
22	V476000210	1	TUBE	
23	V475006320	1	TUBE	
24	V475006000	1	TUBE	
25	V475008070	1	TUBE	
26	V476000460	1	TUBE,22XL200	
27	966170550	1	TUBE,7.3X12.5X550	3-WAY VALVE - WATER SEDIMENTOR
28	966170600	1	TUBE,7.3X12.5X600	WATER SEDIMENTOR - MAGNET PUMP
29	966170150	1	TUBE,7.3X12.5X150	MAGNET PUMP - FUEL FILTER
30	966170360	1	TUBE,7.3X12.5X360	FUEL FILTER - ENGINE
31	966140300	1	TUBE,4X8X300	ENGINE - T-JOINT
32	966140150	1	TUBE,4X8X150	T-JOINT - JOINT PIPE
33	966170700	1	TUBE,7.3X12.5X700	JOINT PIPE - 3-WAY VALVE
34	966140200	1	TUBE,4X8X200	T-JOINT - CHECK VALVE
35	966140040	1	TUBE,4X8X40	CHECK VALVE - FUEL FILTER
36	1G31533210	1	OIL DRAIN PIPE,4X48X40	FUEL TANK - FUEL DRAIN, CUT TO 250MM.
37	1G31843012	1	ASSY FILTER,FUEL	
38	1627143562	1	+ ASSY ELEMENT,FUEL FILTER	
39	175450865	1	BOLT,FLANGE	
40	1G37752030	1	FUEL PUMP	
41	1G38143350	1	FUEL SEPARATOR FILTER ASSY	
42	175450865	1	BOLT,FLANGE	
43	1G06542360	1	TEE JOINT	
44	1C01042460	1	FUEL CHECK VALVE	
45	1749042360	1	JOINT,PIPE	

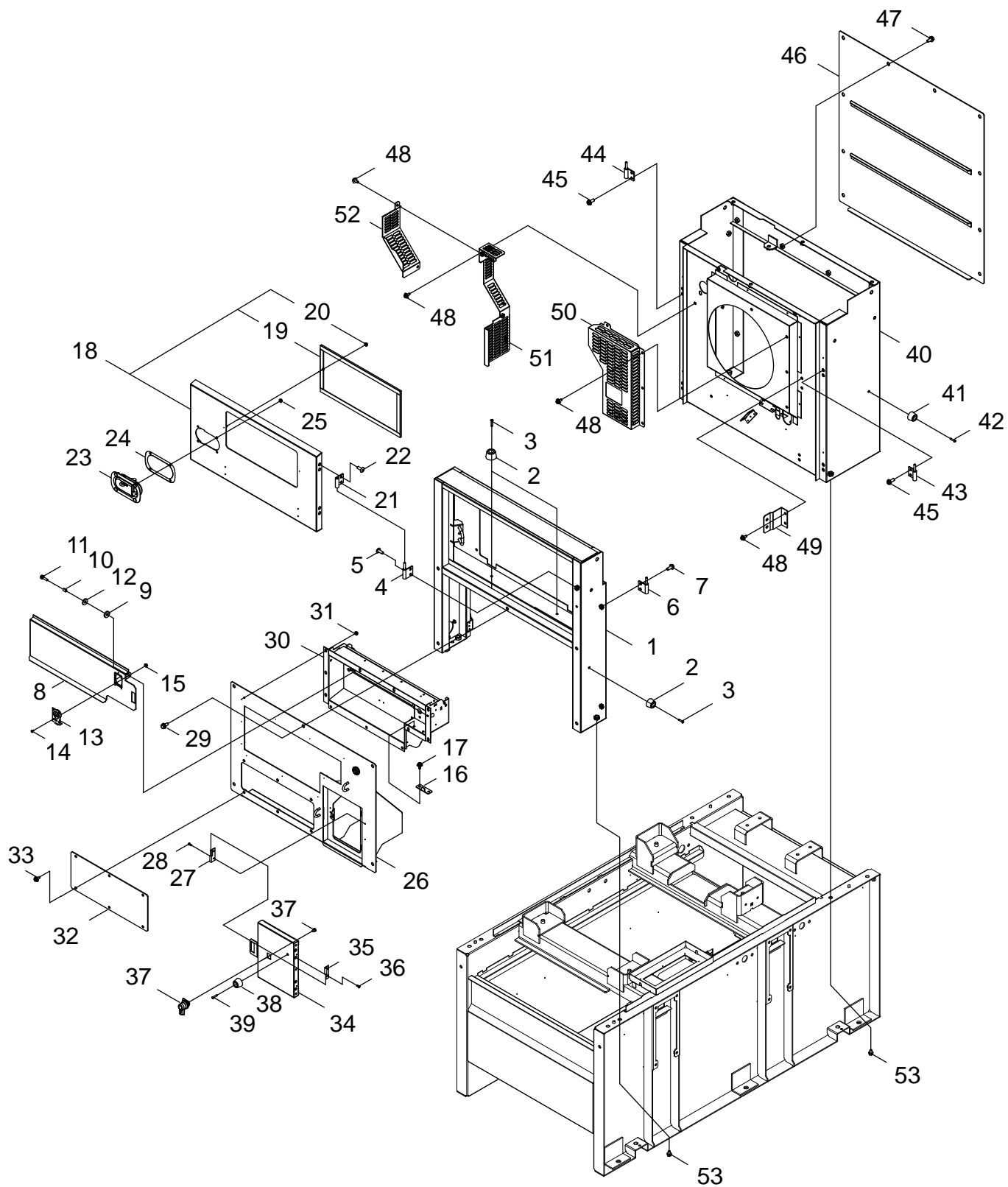
OIL LINES



OIL LINES

NO.	PART NUMBER	QTY.	DESCRIPTION	
1	V205001420	2	BOLT,M8X20-SPW	
2	V475009750	1	TUBE	
3	1259733770	1	TUBE,13X20X400	ENGINE - OIL DRAIN
4	6C09058960	1	GASKET	
5	1J09432430	1	ENGINE OIL FILTER	
6	1522133750	1	DRAIN PLUG,M12X1.25	
7	1595733745	1	DRAIN PIPE SOCKET	

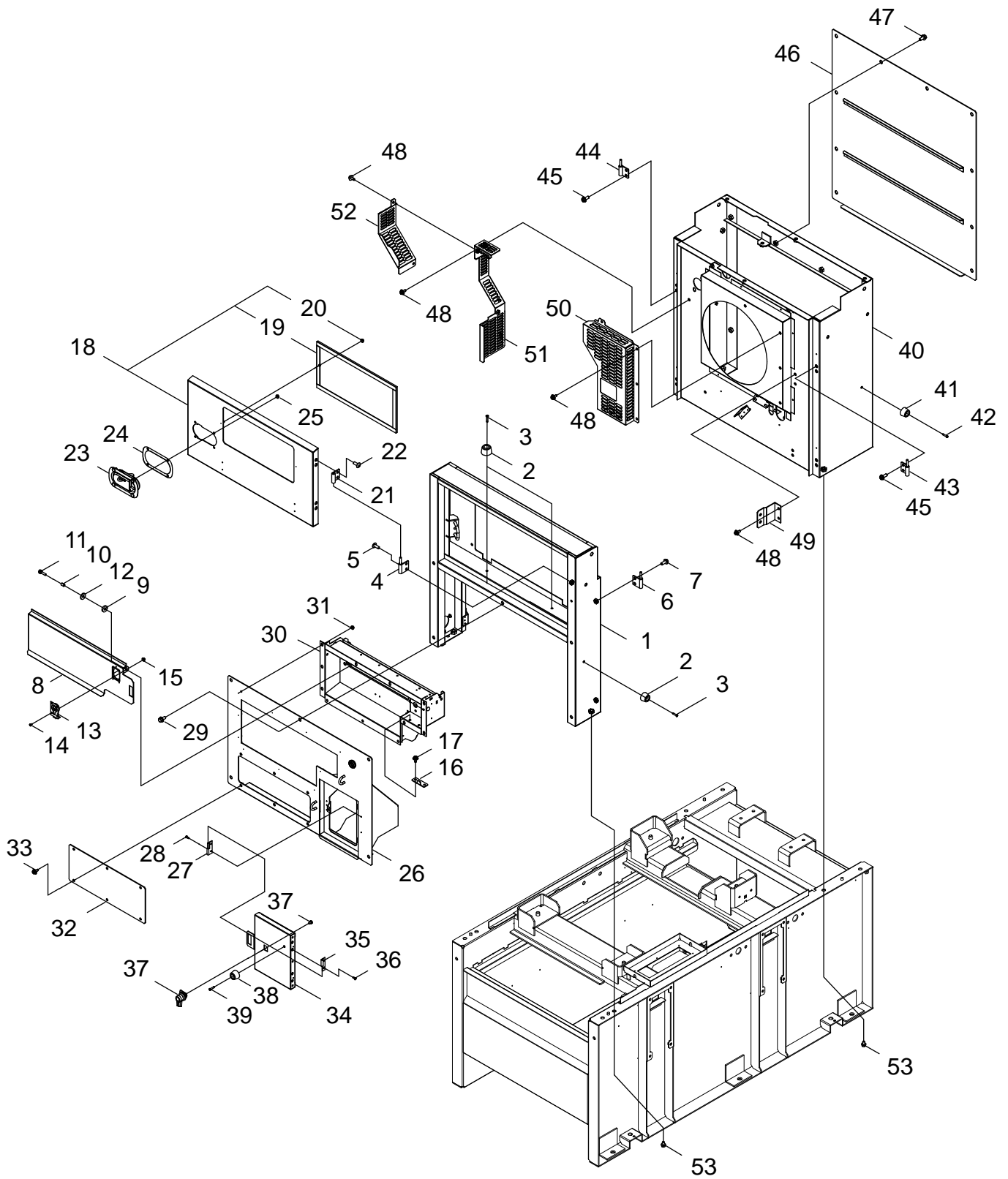
ENCLOSURE FRAME



ENCLOSURE FRAME

NO.	PART NUMBER	QTY.	DESCRIPTION	
1	J495001030	1	ENCLOSURE FRAME	
2	V420003070	4	STAND,RUBBER	
3	9138104020	4	SCREW,4X20 TAPPING	
4	J485000260	2	HINGE	
5	9131808020	4	SCREW TRUSS	
6	J485000250	2	HINGE	
7	V205001260	4	BOLT,M8X15	
8	M472000530	1	COVER	
9	V420004810	2	CUSHION,T6X8.2X22	
10	V375001020	2	COLLAR,6XL11.5	
11	9103606025	2	BOLT SW,M6X25	
12	V306000390	2	WASHER,M8	
13	C390000050	1	LATCH	
14	9146303008	4	SCREW,3X8	
15	V261000010	4	FLANGE NUT,M3 SERRATED	
16	C649000560	1	HOOK,LATCH HOLDER	
17	V204001610	2	BOLT,M6X165-SPW	
18	M040000830	1	FRONT DOOR,ASM	
19	J425002351	1	+ PANEL	
20	V263000330	2	+ FLANGE NUT,M5 SERRATED	
21	J485000280	2	HINGE	
22	9131808020	4	SCREW TRUSS	
23	C701000420	1	LOCK COVER	
24	V542000120	1	SEAL,LOCK COVER	
25	V264000220	4	FLANGE NUT,M6 SERRATED	
26	J503000211	1	PANEL	D19701000021-
27	J485000310	2	HINGE	
28	9144704012	4	SCREW,4X12 TAPPING	
29	V205001420	5	BOLT,M8X20-SPW	
30	J431000151	1	CONTROL BOX	D19701000021-
31	V264000220	11	FLANGE NUT,M6 SERRATED	
32	J503000220	1	PANEL,FRONT CHECK	
33	V204002040	6	BOLT,M6X16	
34	M471000190	1	FUEL FILL COVER	
35	J485000330	2	HINGE	
36	9144704012	4	SCREW,4X12 TAPPING	
37	C701001110	1	HANDLE,C319A2	
38	V420003070	1	STAND,RUBBER	
39	9138104020	1	SCREW,4X20 TAPPING	
40	J495001040	1	ENCLOSURE FRAME	
41	V420003070	2	STAND,RUBBER	
42	9138104020	2	SCREW,4X20 TAPPING	
43	J485000260	2	HINGE	
44	J485000250	2	HINGE	
45	V205001260	8	BOLT,M8X15	

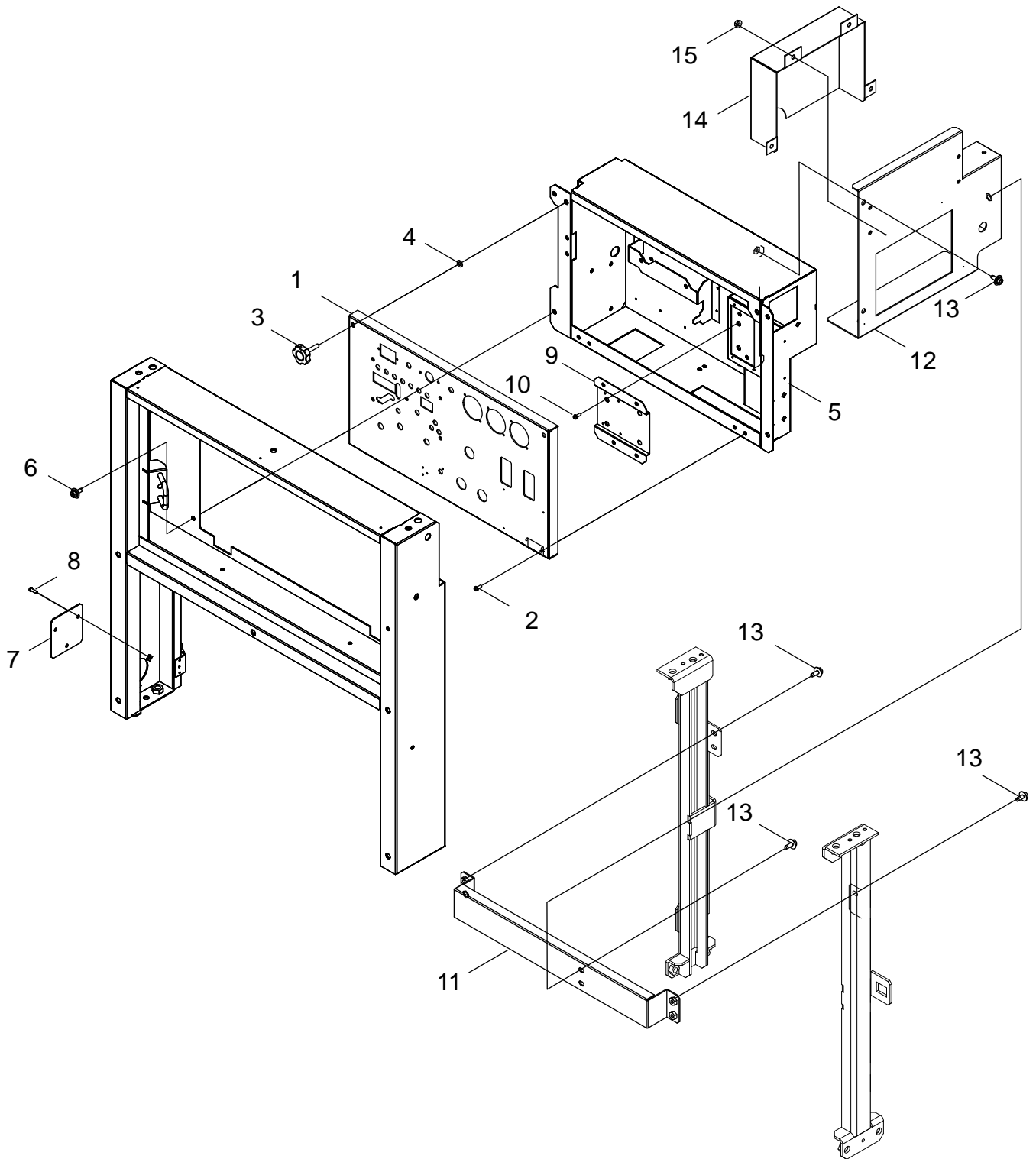
ENCLOSURE FRAME



ENCLOSURE FRAME

NO.	PART NUMBER	QTY.	DESCRIPTION	
46	J503000250	1	PANEL,REAR	
47	V205001420	10	BOLT,M8X20-SPW	
48	V204002040	11	BOLT,M6X16	
49	C519004721	1	RADIATOR MOUNT BRACKET	
50	J447000690	1	GUARD,ENG.-FAN (RIGHT)	
51	A172003700	1	COVER,FAN	
52	A172003050	1	COVER,ENG.-FAN (LEFT)	
53	V206000800	8	BOLT,M10X25-SPW	

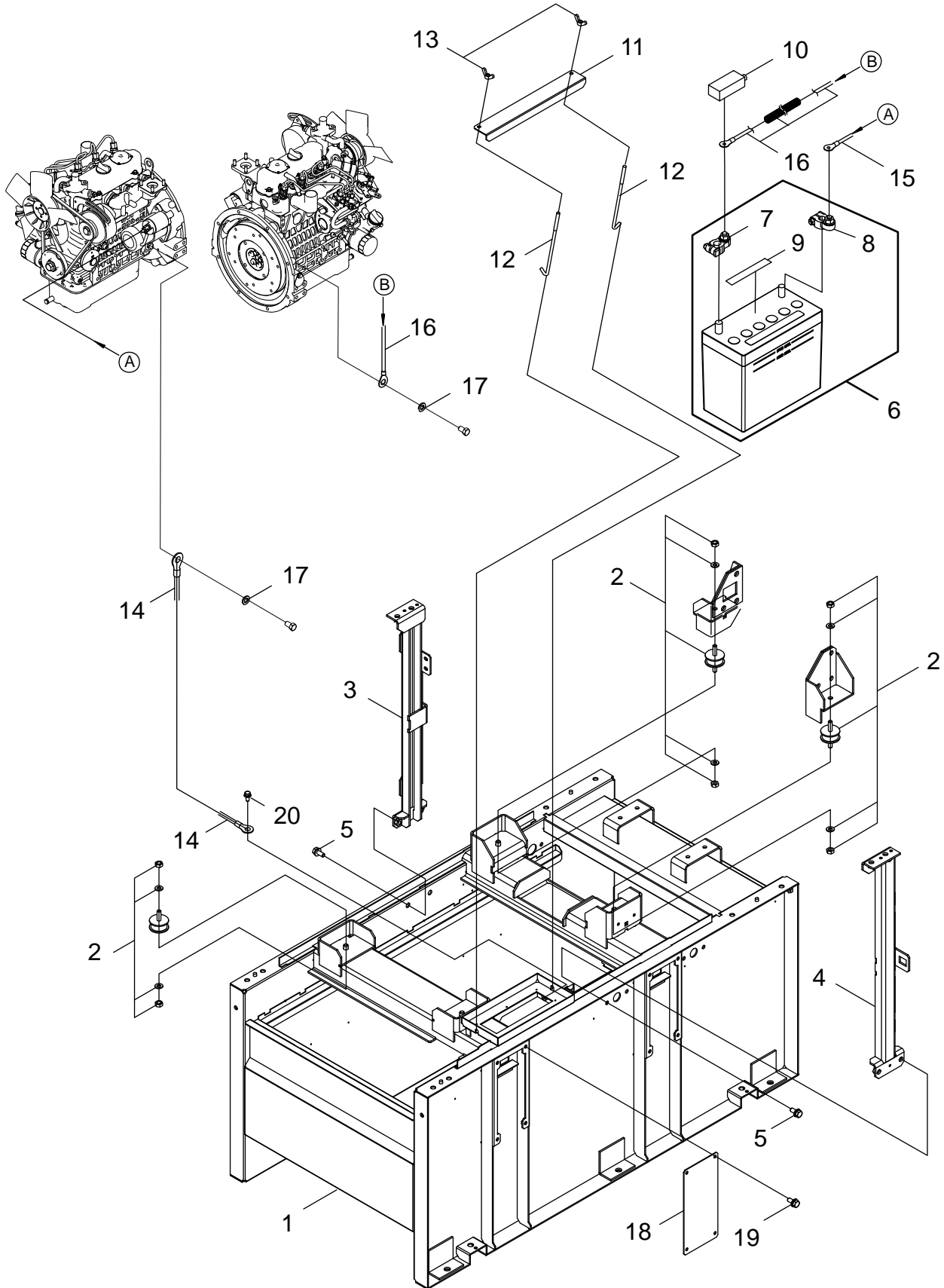
FRONT ENCLOSURE



FRONT ENCLOSURE

NO.	PART NUMBER	QTY.	DESCRIPTION	
1	C165000511	1	PANEL,OPERATION	D19701000001-D19701000269
1	C165000721	1	PANEL,OPERATION	D19701000270-
2	9156604012	4	SCREW,M4X12 W/SW BLACK	
3	M613000020	2	OPERATION PANEL ACCESS KNOB	
4	V583000230	2	RING,U	
5	J431000160	1	CONTROL BOX	
6	V204002040	4	BOLT,M6X16	
7	J503000230	1	PANEL	
8	9154204014	3	SCREW	
9	C528001020	1	STAY	
10	9103606016	4	BOLT SW	
11	C528001011	1	BRACKET,PANEL MOUNTING	D19701000021-
12	J503000240	1	PANEL	
13	V204002040	8	BOLT,M6X16	
14	M472000540	1	COVER	
15	V264000220	4	FLANGE NUT,M6 SERRATED	

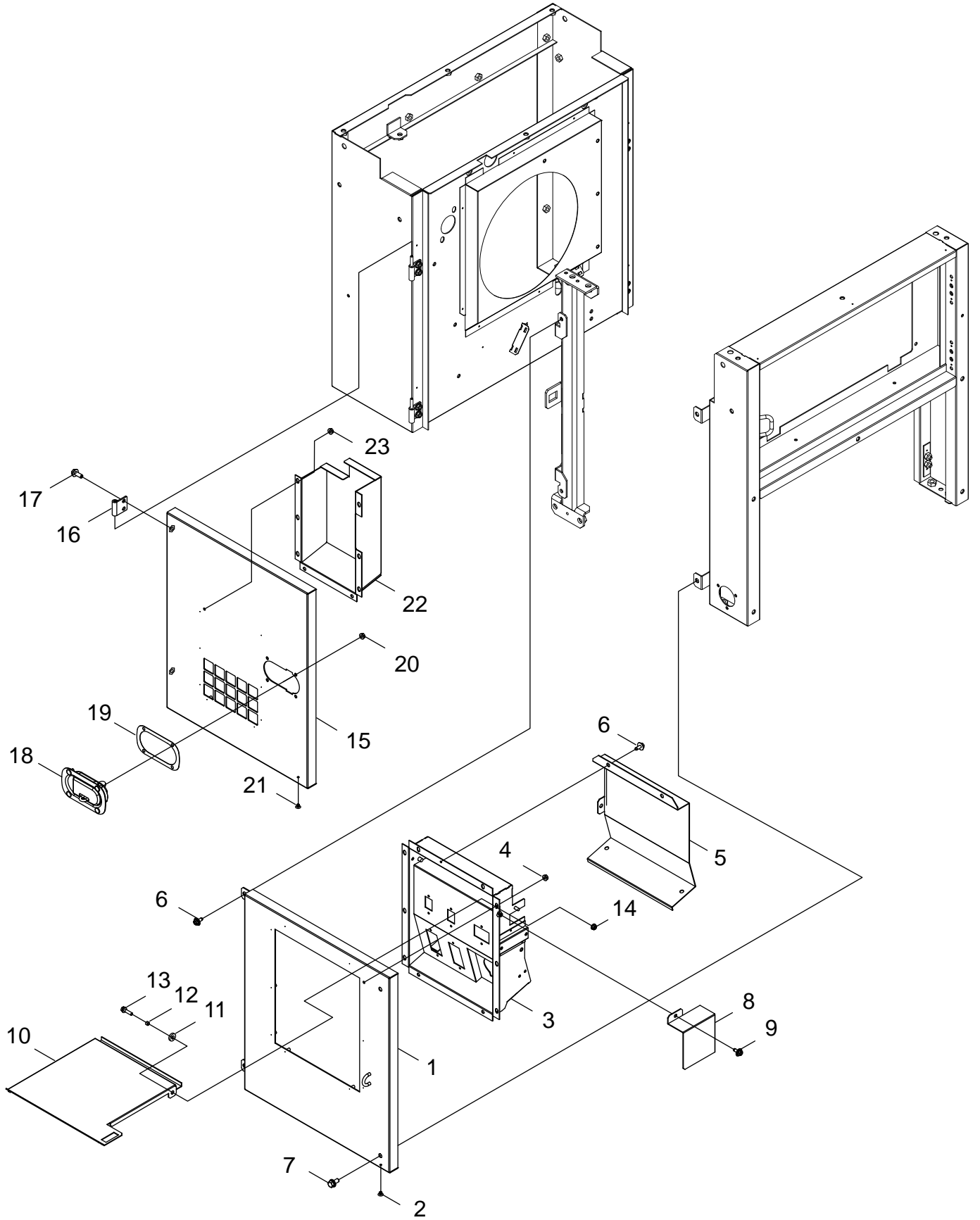
BASE FRAME



BASE FRAME

NO.	PART NUMBER	QTY.	DESCRIPTION	
1	J404001440	1	FRAME	
2	V420003140	4	MOTOR MOUNT RUBBER ISOLATOR	
3	J415001261	1	LEFT SIDE ENCLOSURE FRAME MOUNTING	D19701000021-
4	J415001271	1	RIGHT SIDE ENCLOSURE FRAME MOUNTING	D19701000021-
5	V206000800	4	BOLT,M10X25-SPW	
6	V046000190	1	BATTERY,ASM 46B24L	
7	G304000020	1	+ TERMINAL,POSITIVE	
8	G304000030	1	+ TERMINAL,NEGATIVE	
9	X505010410	1	+ LABEL,PROPOSITION65/BATTERIES CAUTION	
10	G305000030	1	TERMINAL CAP (RED)	
11	G303000290	1	HOLDER,BATTERY	
12	V240000150	2	BOLT,BATTERY	
13	9219008000	2	NUT,M8 WING	
14	M390000300	1	LEAD	
15	M386000340	1	LEAD,BLACK (ENG. TO BATTERY-)	
16	M380000170	1	LEAD WIRE,BLACK/RED (ENG. TO BATTERY+)	
17	90061700010	2	WASHER,M10	
18	J503000270	4	PANEL,BED DUCT	
19	V204002040	16	BOLT,M6X16	
20	V204002040	1	BOLT,M6X16	

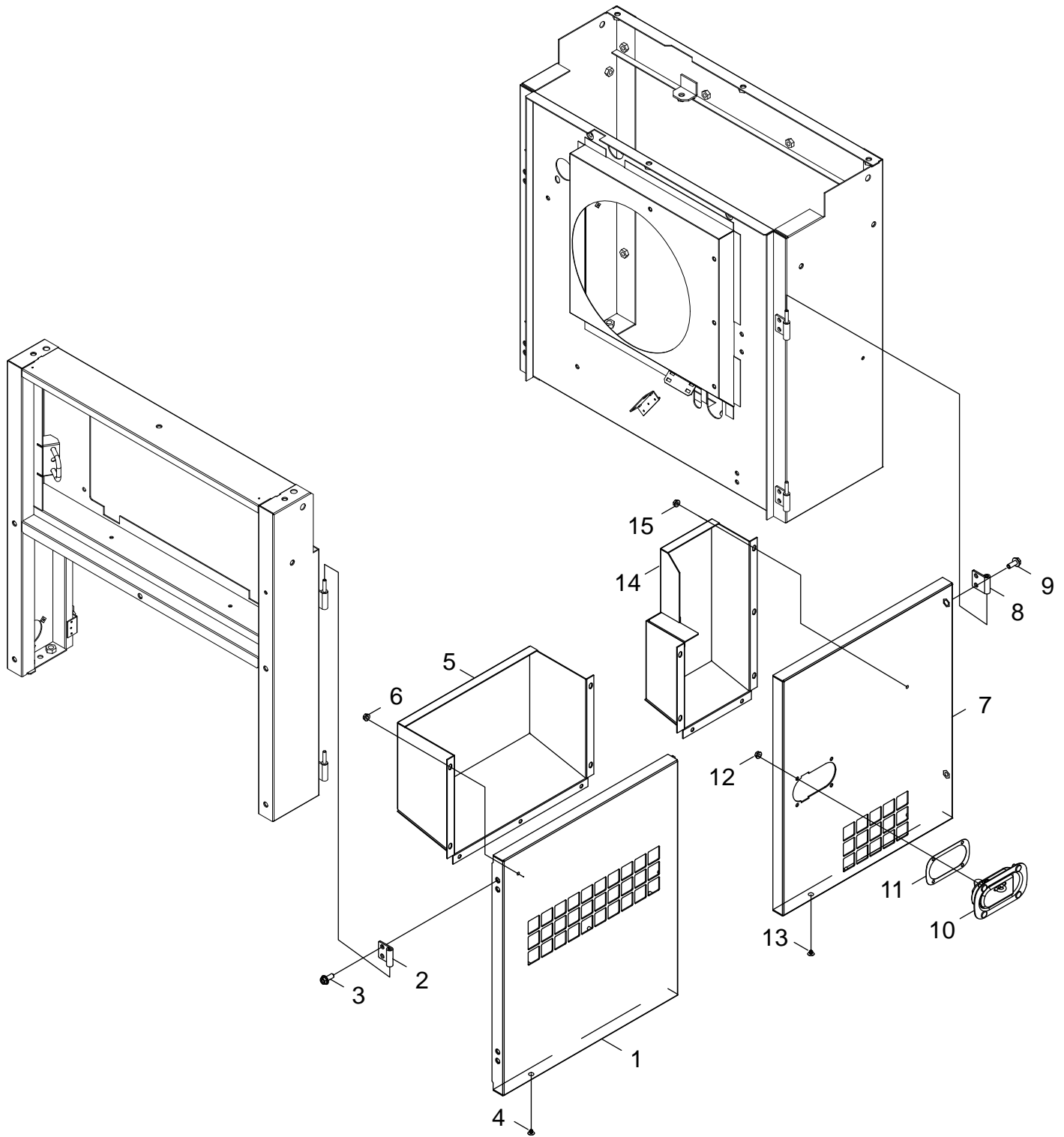
LEFT ENCLOSURE



LEFT ENCLOSURE

NO.	PART NUMBER	QTY.	DESCRIPTION
1	J503000260	1	PANEL,LEFT
2	V494000420	2	PANEL,CONTROL BOX COVER
3	J431000170	1	CONTROL BOX
4	V264000220	10	FLANGE NUT,M6 SERRATED
5	M471000490	1	COVER,LEFT PANEL
6	V204002040	7	BOLT,M6X16
7	V205001420	2	BOLT,M8X20-SPW
8	M471000500	1	COVER,TERMINAL BLOCK
9	V204002040	2	BOLT,M6X16
10	M472000550	1	COVER,CONTROL BOX
11	V420003160	2	BUSHING,T4X8.2X18 RUBBER
12	V353000530	2	COLLAR,6XL5
13	9103606025	2	BOLT SW,M6X25
14	V264000220	2	FLANGE NUT,M6 SERRATED
15	M404001670	1	DOOR,LEFT REAR
16	J485000280	2	HINGE
17	V205001260	4	BOLT,M8X15
18	C701000420	1	LOCK COVER
19	V542000120	1	SEAL,LOCK COVER
20	V264000220	4	FLANGE NUT,M6 SERRATED
21	V162000520	2	PLUG,CP-30-HP-3
22	G129000140	1	DUCT,AIR DOOR-L REAR
23	V264000220	8	FLANGE NUT,M6 SERRATED

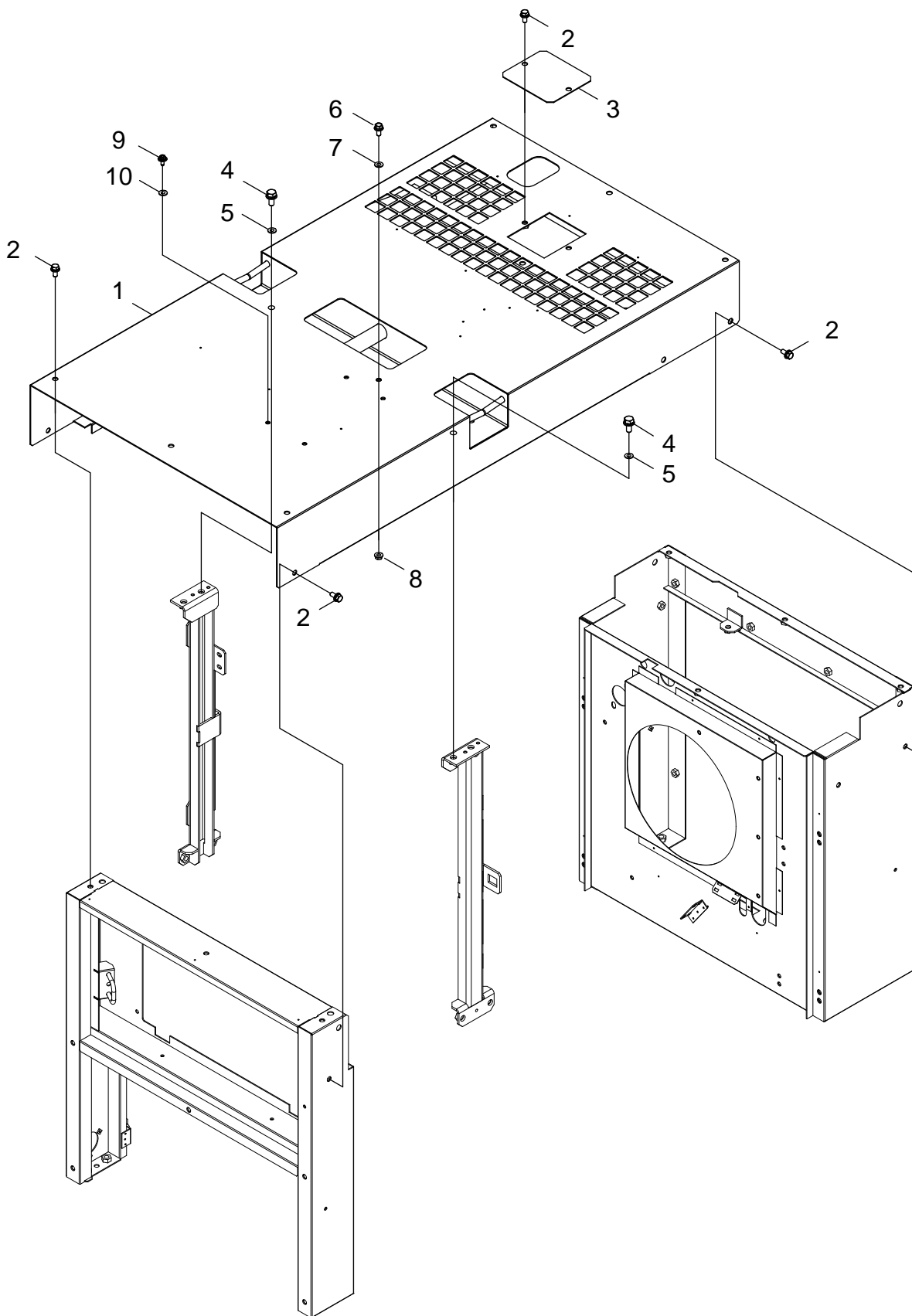
RIGHT ENCLOSURE



RIGHT ENCLOSURE

NO.	PART NUMBER	QTY.	DESCRIPTION
1	M407000760	1	DOOR,RIGHT
2	J485000280	2	HINGE
3	V205001260	4	BOLT,M8X15
4	V162000520	2	PLUG,CP-30-HP-3
5	G129000120	1	DUCT,AIR DOOR-R FRONT
6	V264000220	7	FLANGE NUT,M6 SERRATED
7	M407000770	1	DOOR,RIGHT REAR
8	J485000280	2	HINGE
9	V205001260	4	BOLT,M8X15
10	C701000420	1	LOCK COVER
11	V542000120	1	SEAL,LOCK COVER
12	V264000220	4	FLANGE NUT,M6 SERRATED
13	V162000520	2	PLUG,CP-30-HP-3
14	G129000130	1	DUCT,AIR DOOR-R REAR
15	V264000220	7	FLANGE NUT,M6 SERRATED

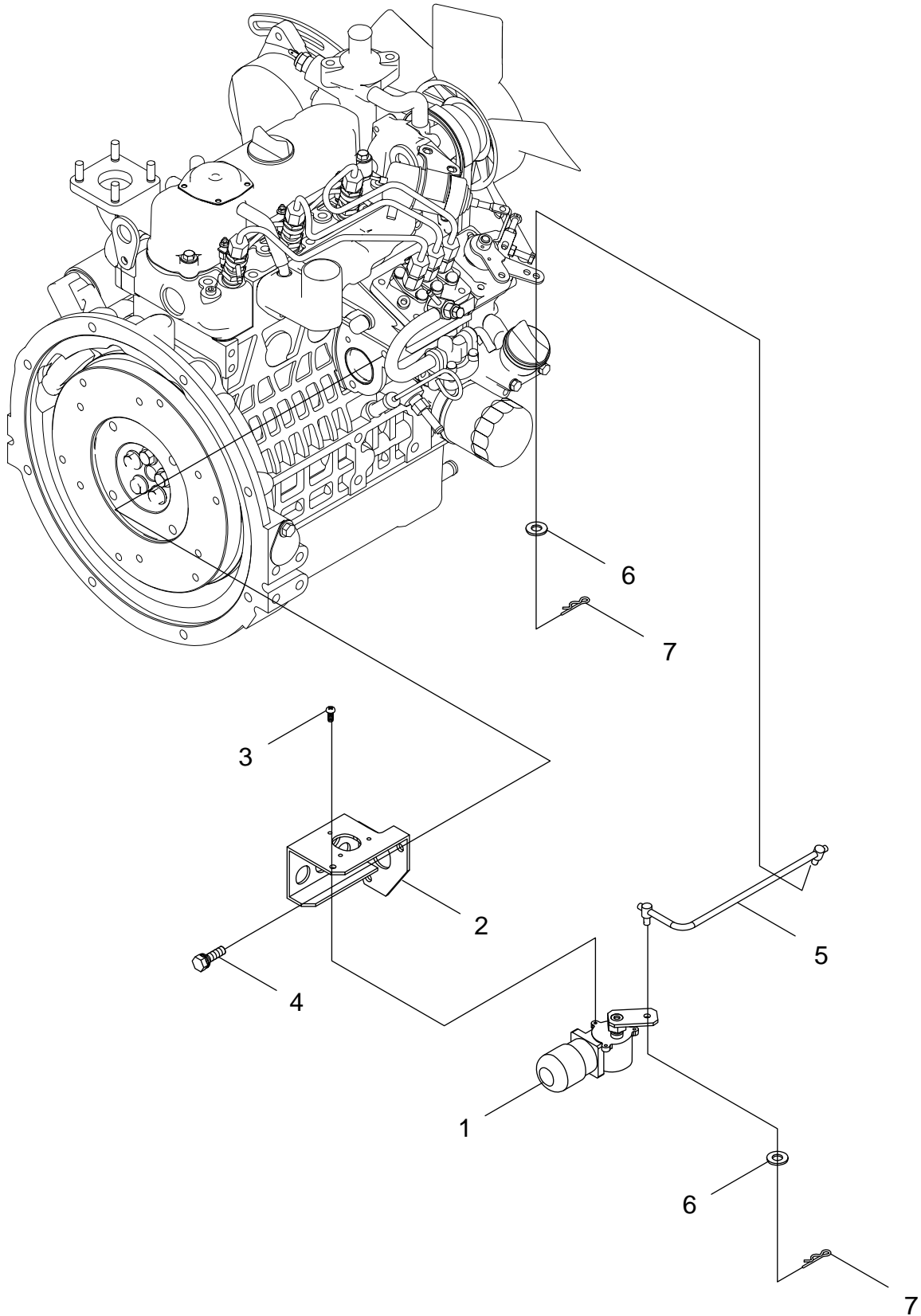
TOP ENCLOSURE



TOP ENCLOSURE

NO.	PART NUMBER	QTY.	DESCRIPTION	
1	J495001050	1	ENCLOSURE FRAME	
2	V205001420	15	BOLT,M8X20-SPW	
3	J480001860	1	LID,RADIATOR CAP COVER	
4	90010410025	4	BOLT	
5	V109000410	4	GASKET	
6	90010408015	1	BOLT	
7	V109000420	1	GASKET	
8	V265000290	1	FLANGE NUT,M8 SERRATED	
9	90010406016	4	BOLT	
10	V109000430	4	GASKET	

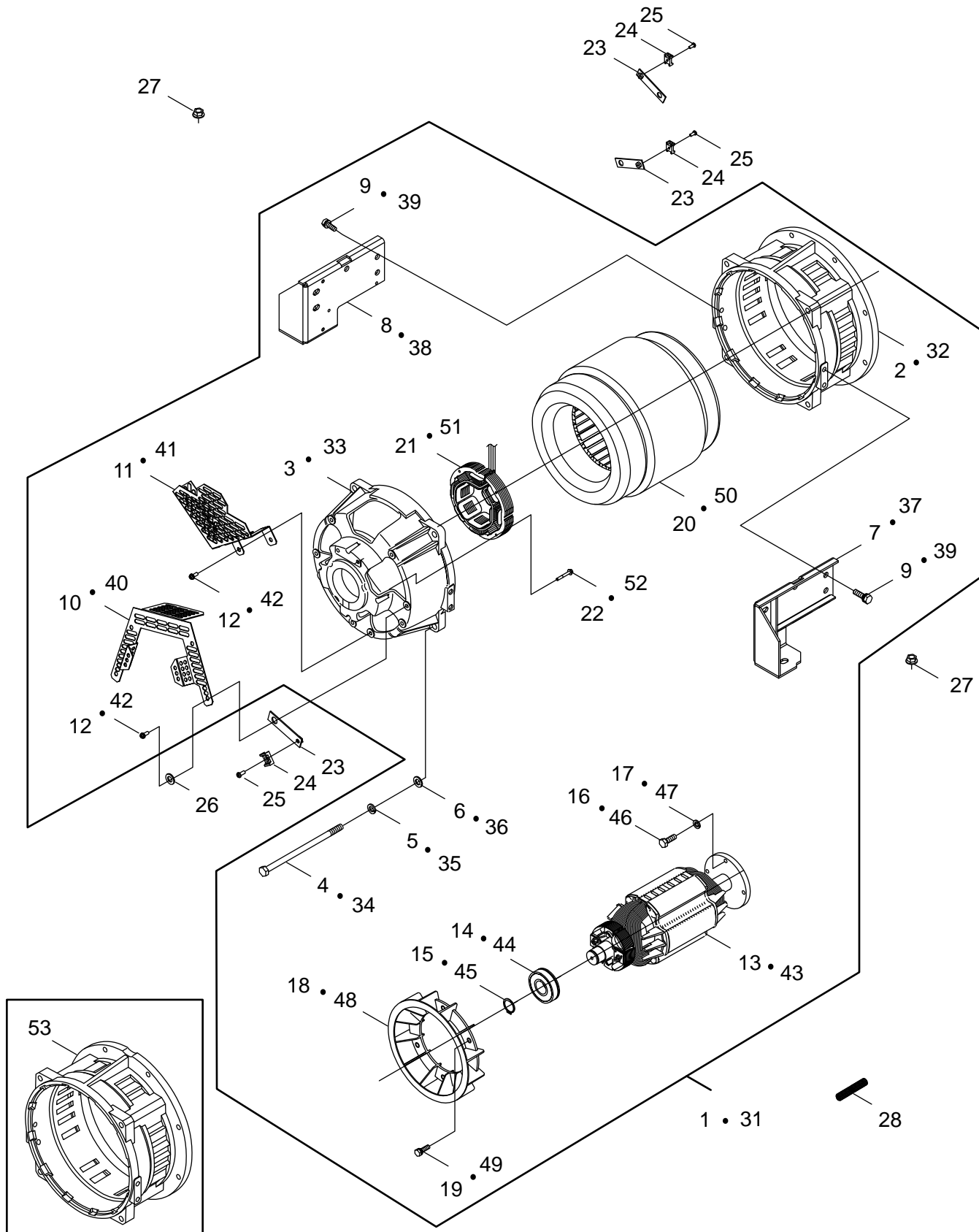
ENGINE PARTS



ENGINE PARTS

NO.	PART NUMBER	QTY.	DESCRIPTION	
1	G280000430	1	MOTOR,RPM ADJUSTMENT	
2	C519004761	1	MOTOR COMP MOUNTING BRACKET	
3	9156403012	3	SCREW,M3X12 SW	
4	V205001170	2	BOLT,M8X20-SPW	
5	C454000330	1	ROD,RPM ADJUSTMENT	
6	90060200006	2	WASHER,M6	
7	9300306000	2	PIN CLIP	

ALTERNATOR

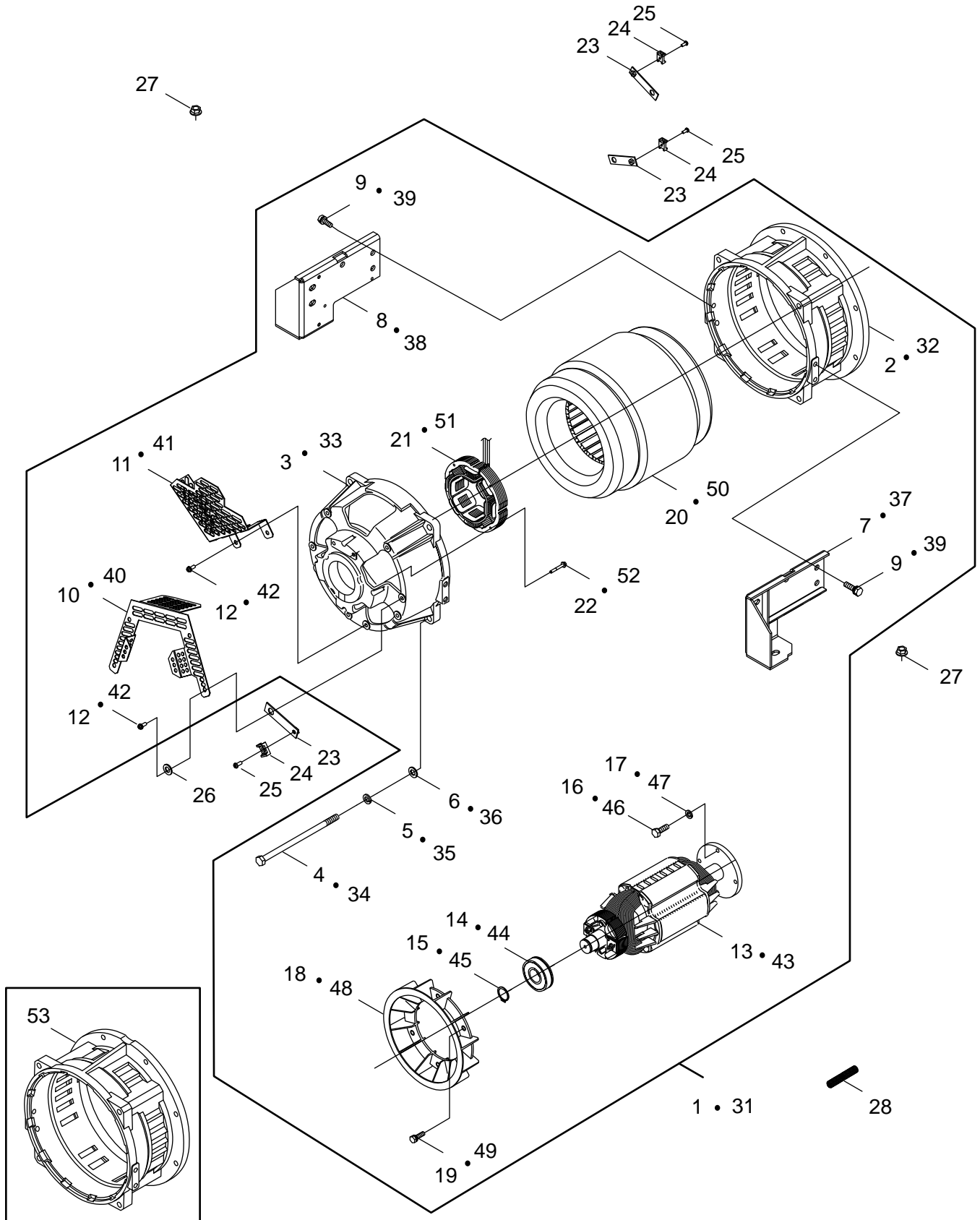


Block Heater Interference Countermeasure Product

ALTERNATOR

NO.	PART NUMBER	QTY.	DESCRIPTION	
1	G02000060	1	GENERATOR SET	D19701000001-D19701000526
2	M305000680	1	+ HOUSING	
3	M305000690	1	+ HOUSING	
4	V207000290	4	+ BOLT,M12X220	
5	90060500012	4	+ WASHER,M12 SPRING	
6	90061700012	4	+ WASHER,M12	
7	C527001220	1	+ RIGHT SIDE ALT MTG BRKT	
8	C527001230	1	+ LEFT SIDE ALT MTG BRKT	
9	9102410030	8	+ BOLT,M10X30-SPW	
10	J447001350	1	+ GUARD,REAR BRACKET (UPPER)	
11	J447001360	1	+ GUARD,REAR BRACKET (LOWER)	
12	9156406016	8	+ SCREW SW,6X16	
13	M102000782	1	+ ROTOR	
14	V592000200	1	+ BEARING,BALL	
15	9242334000	1	+ SNAP RING,CS-34	
16	9101410030	4	+ BOLT,M10X30 P1.25	
17	90060500010	4	+ WASHER,M10 SPRING	
18	A171000091	1	+ FAN,ROTOR COOLING	
19	90014708025	6	+ BOLT,M8X25	
20	M106001440	1	+ STATOR,MAIN	
21	M106001270	1	+ STATOR,EXCITER	
22	9102405040	4	+ BOLT,M5X40	
23	C519002461	3	BRACKET,GENERATOR HOUSING MOUNTING	
24	M416000010	4	TIE MOUNT	
25	9134305012	4	SCREW,M5X12	
26	90060000008	1	WASHER,M8	
27	V268000060	2	FLANGE NUT,M12 SERRATED	
28	V476001130	1	TUBE,28XL850	
31	G020000210	1	ALTERNATOR	D19701000527-
32	M305000680	1	+ HOUSING	
33	M305000690	1	+ HOUSING	
34	V207000290	4	+ BOLT,M12X220	
35	90060500012	4	+ WASHER,M12 SPRING	
36	90061700012	4	+ WASHER,M12	
37	C527001220	1	+ RIGHT SIDE ALT MTG BRKT	
38	C527001230	1	+ LEFT SIDE ALT MTG BRKT	
39	9102410030	8	+ BOLT,M10X30-SPW	
40	J447001350	1	+ GUARD,REAR BRACKET (UPPER)	
41	J447001360	1	+ GUARD,REAR BRACKET (LOWER)	
42	9156406016	8	+ SCREW SW,6X16	
43	M102000782	1	+ ROTOR	
44	V592000200	1	+ BEARING,BALL	
45	9242334000	1	+ SNAP RING,CS-34	
46	9101410030	4	+ BOLT,M10X30 P1.25	
47	90060500010	4	+ WASHER,M10 SPRING	

ALTERNATOR

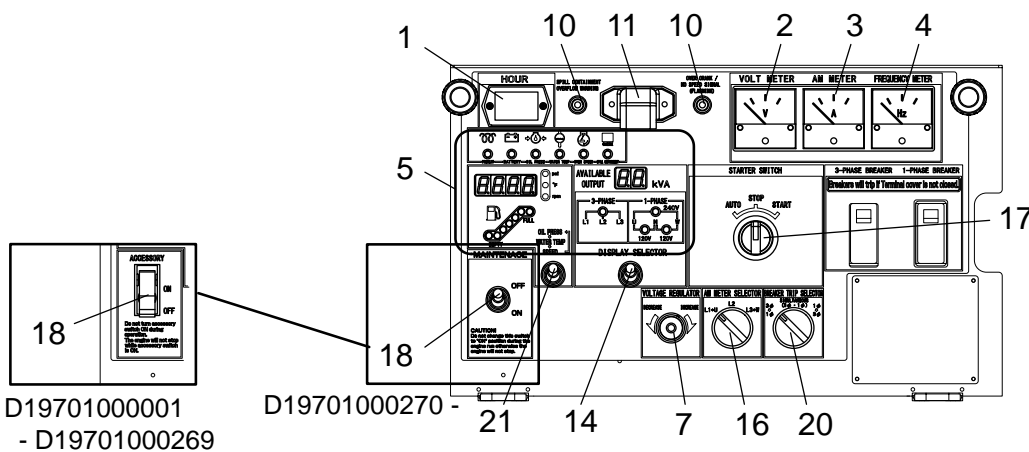
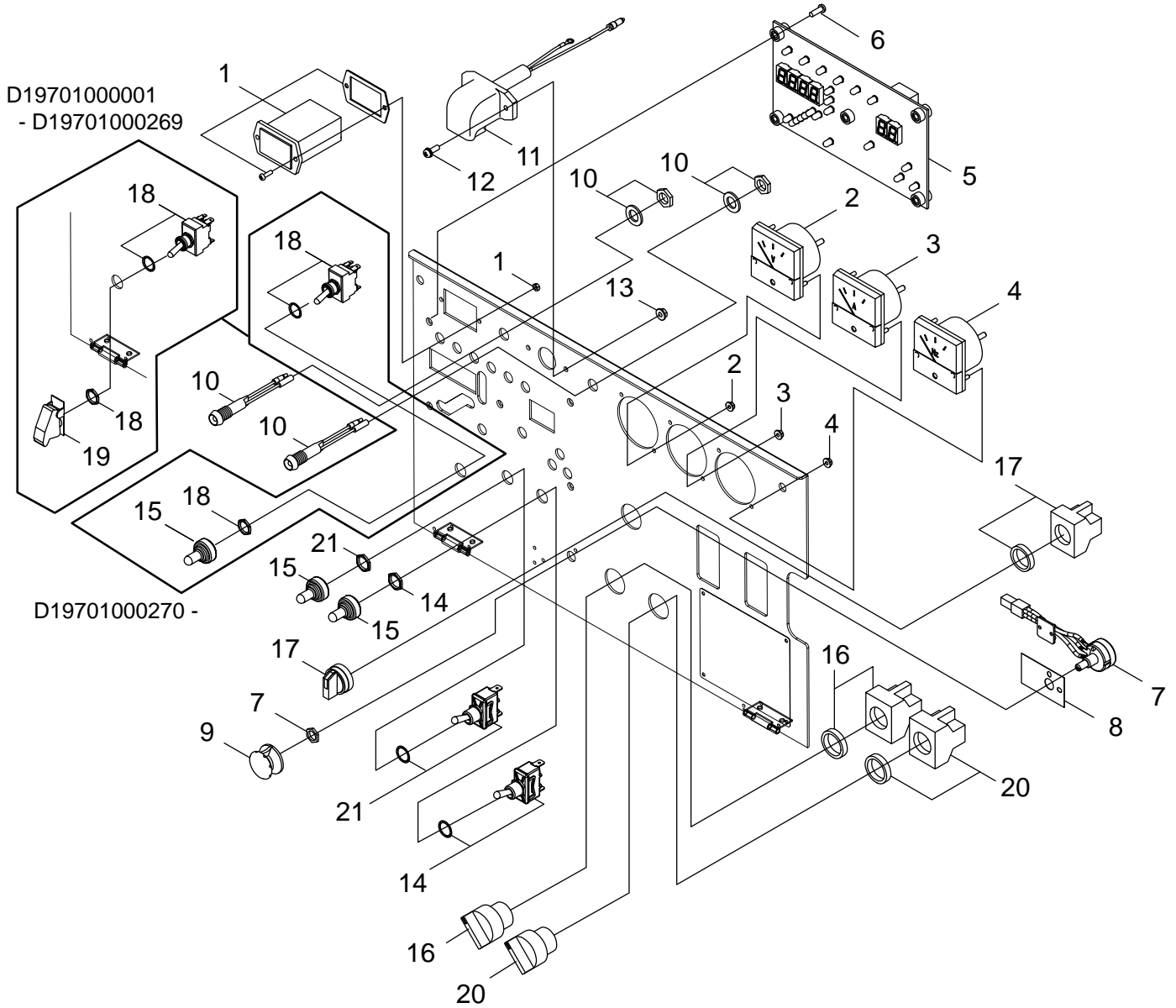


Block Heater Interference Countermeasure Product

ALTERNATOR

NO.	PART NUMBER	QTY.	DESCRIPTION	
48	A171000091	1	+ FAN,ROTOR COOLING	
49	90014708025	6	+ BOLT,M8X25	
50	M106001650	1	+ STATOR	
51	M106001270	1	+ STATOR,EXCITER	
52	9102405040	4	+ BOLT,M5X40	
53	M305000760	1	HOUSING	BLOCK HEATER INTERFERENCE COUNTERMEASURE PRODUCT

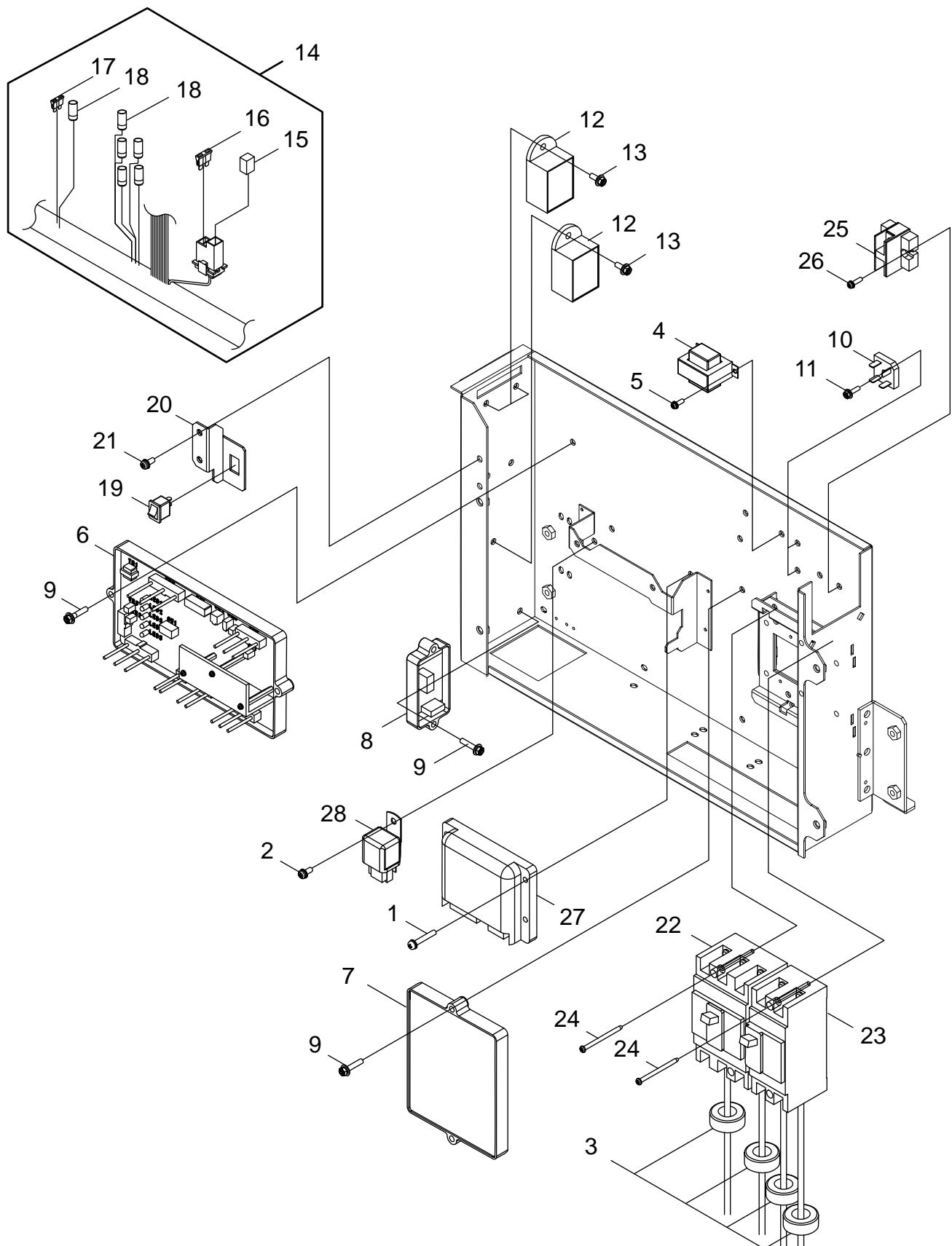
MAIN CONTROL PANEL



MAIN CONTROL PANEL

NO.	PART NUMBER	QTY.	DESCRIPTION	
1	G319000190	1	METER,HOUR	
2	M109000100	1	METER,VOLT 0 - 300V	
3	M109000400	1	METER,AMMETER 0-80A	
4	M109000410	1	METER,FREQUENCY	
5	G370003020	1	UNIT,DISPLAY CONTROL	
6	9146104012	5	SCREW,M4X12	
7	M112000160	1	VOLUME,VOLTAGE REGULATOR	VOLTAGE REGULATOR
8	M702000050	1	INS PAPER	
9	E145000060	1	DIAL,VOLUME	
10	G327000740	2	LAMP,BD-1001 DC12V	
11	G327000400	1	LAMP	
12	90023804016	2	SCREW,M4X16	
13	V262000190	2	FLANGE NUT,M4 SERRATED	
14	A440001970	1	SWITCH,MOMENTARY TOGGLE	DISPLAY SELECTOR
15	V494000910	2	CAP,TOGGLE SWITCH	D19701000001-D19701000269
15	V494000910	3	CAP,TOGGLE SWITCH	D19701000270-
16	G334001100	1	SWITCH,AR22PR-311B SELECTOR	AMMETER SELECTOR
17	G334002060	1	SWITCH,AUTO STOP START	STARTER
18	G334001960	1	SWITCH,ACCESSORY	ACCESSORY D19701000001-D19701000269
18	A440003600	1	SWITCH,WD1303F 15A 250VAC ON OFF	ACCESSORY D19701000270-
19	A447000140	1	COVER,SWITCH KNOB	D19701000001-D19701000269
20	G334001100	1	SWITCH,AR22PR-311B SELECTOR	BREAKER TRIP SELECTOR
21	A440001970	1	SWITCH,MOMENTARY TOGGLE	OIL PRESSURE/WATER TEMPERATURE/SPEED SELECTOR

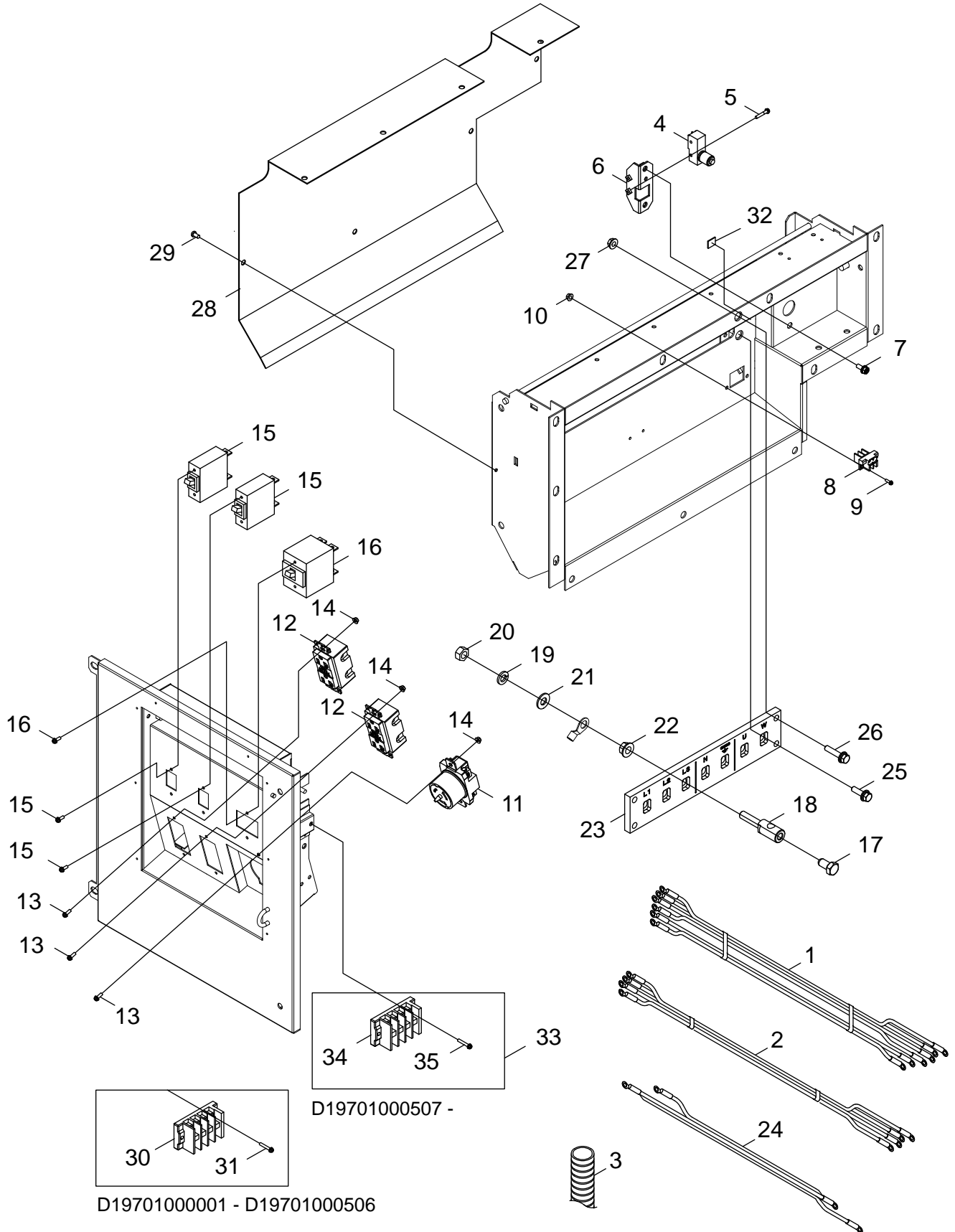
MAIN BREAKER AND CONTROL BOX



MAIN BREAKER AND CONTROL BOX

NO.	PART NUMBER	QTY.	DESCRIPTION	
1	9156405020	4	SCREW SW,5X20	
2	9156405012	1	SCREW SW,5X12	
3	M108000190	4	CURRENT TRANSFORMER	
4	C163000090	1	TRANSFORMER	
5	9156404012	2	SCREW,M4X12 SW	
6	G370002172	1	UNIT,AVR CONTROL	
7	G370003340	1	M4X12 TAPPING SCREW	
8	G370002401	1	UNIT,CONTROL DC12V	
9	9103605025	6	BOLT,M5X25 SW	
10	M105000000	2	STARTER EXCITER	
11	9103604016	2	BOLT,M4X16	
12	G370000471	3	12V 1A CONTROL RELAY	
13	9103705014	3	BOLT,M5X14	
14	G031006440	1	HARNESS,WIRE MAIN	D19701000001-D19701000269
14	G364000260	1	HARNESS,WIRE	D19701000270-D19701000526
14	G364000600	1	WIRE HARNESS	D19701000527-
15	G350000450	1	+ FUSE,50A	
16	G350000400	1	+ FUSE,20A	
17	G350000660	1	+ FUSE,2A	
18	G347000020	6	+ DIODE	
19	A440002650	1	SWITCH,ROCKER	
20	C527001610	1	ROCKER SWITCH MOUNTING BRACKET	
21	9156405012	2	SCREW SW,5X12	
22	M111000270	1	BREAKER,3 PHASE 600V	
23	M111001510	1	BREAKER,SINGLE PHASE 600V	
24	9146104050	4	SCREW	
25	M308000620	1	BLOCK,SINGLE PHASE TERMINAL	
26	9156404016	2	SCREW,4X16 SPW	
27	1747260606	1	ECU(EG-2)	
28	5H63242510	1	RELAY,GLOW PLUG	

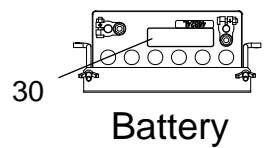
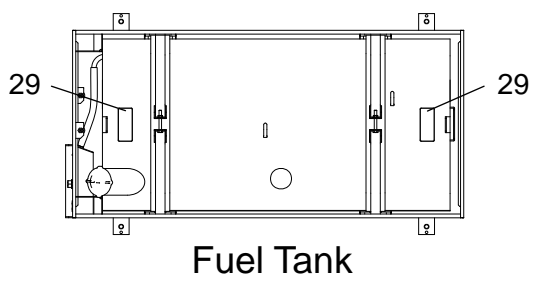
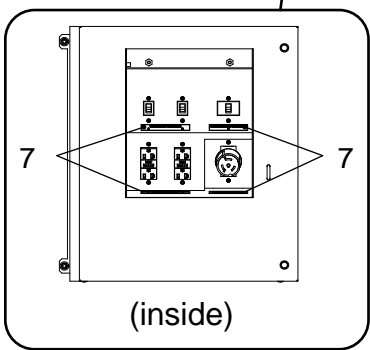
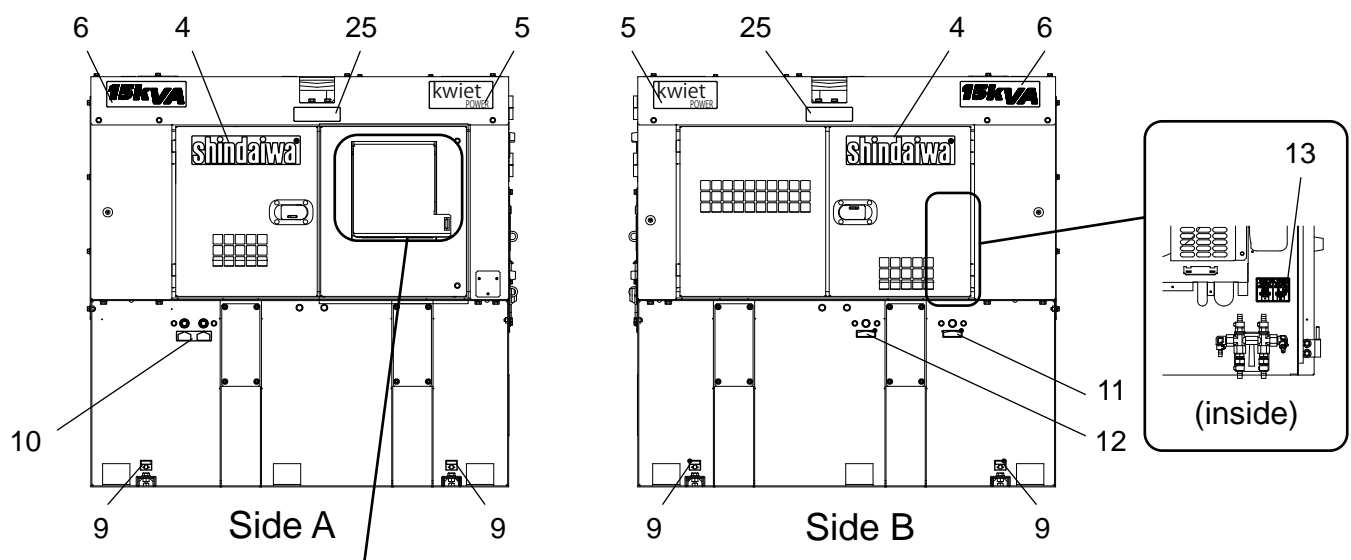
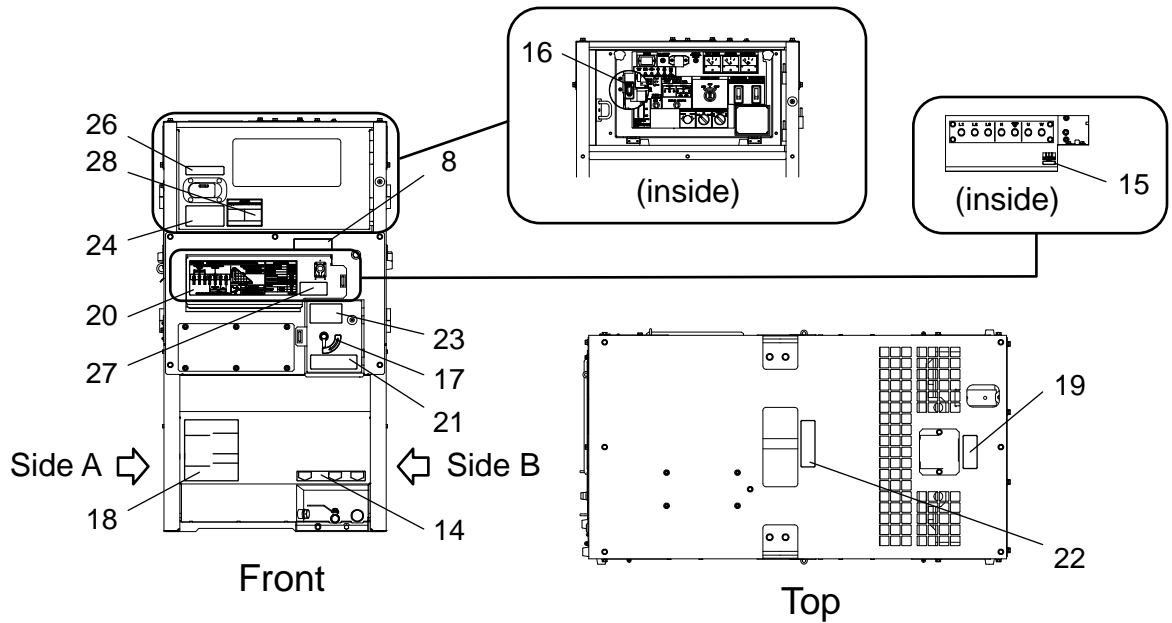
POWER OUTPUT TERMINALS



POWER OUTPUT TERMINALS

NO.	PART NUMBER	QTY.	DESCRIPTION	
1	G363001080	1	HARNESS,WIRE THREE/SINGLE	
2	G362001400	1	HARNESS,SGL-PHASE\3-PHASE WIRE	
3	V475005480	1	TUBE,15XL200	
4	A045000750	1	SWITCH,ON-OFF PLUNGER	
5	9156404025	2	SCREW SPW,4X25	
6	C527001620	1	MOUNTING BRACKET,ON-OFF SWITCH	
7	V204001610	2	BOLT,M6X165-SPW	
8	M308000680	1	BLOCK,TSU-281-2P TERMINAL	
9	9156403012	2	SCREW,M3X12 SW	
10	V261000010	2	FLANGE NUT,M3 SERRATED	
11	C154000170	1	PLUG SOCKET,TWIST LOCK 50A 125/250V	
12	C154000491	2	RECEPTACLE,GFCI 20A,125V	
13	9156404012	6	SCREW,M4X12 SW	
14	V262000190	6	FLANGE NUT,M4 SERRATED	
15	C137000080	2	CIRCUIT BREAKER,20A	
16	C137000070	1	CIRCUIT BREAKER,50A	
17	V207000090	7	BOLT,M12X25	
18	V227000010	7	TERMINAL POST,M12 STUD	
19	90060500012	7	WASHER,M12 SPRING	
20	9200512000	7	NUT,M12	
21	9222712000	7	WASHER,M12	
22	V268000060	7	FLANGE NUT,M12 SERRATED	
23	M307000400	1	OUTPUT TERMINAL PLATE, L1/L2/L3/N/GND/U/W	
24	M387000470	1	LEAD,BLACK (N TO G) + GREEN/YELLOW (G TO SIDE DOOR,SIDE DOOR TO ENG.)	
25	90014708030	3	BOLT,M8X30	
26	9102408040	1	BOLT,M8X40 SW	
27	V265000290	1	FLANGE NUT,M8 SERRATED	
28	C557000660	1	PLATE,PROTECTION	
29	V491000470	12	CLIP,CANOE	
30	M308000601	1	BLOCK,4P,U/N/GRD/W TERMINAL	D19701000001-D19701000506
31	9156404025	2	SCREW SPW,4X25	D19701000001-D19701000506
32	M416000040	1	ADHESIVE CABLE TIE MOUNT	
33	P021055650	1	TERMINAL BLOCK	
34	M308000602	1	+ BLOCK,TERMINAL	D19701000507-
35	9156804016	2	+ SCREW,4X16	D19701000507-

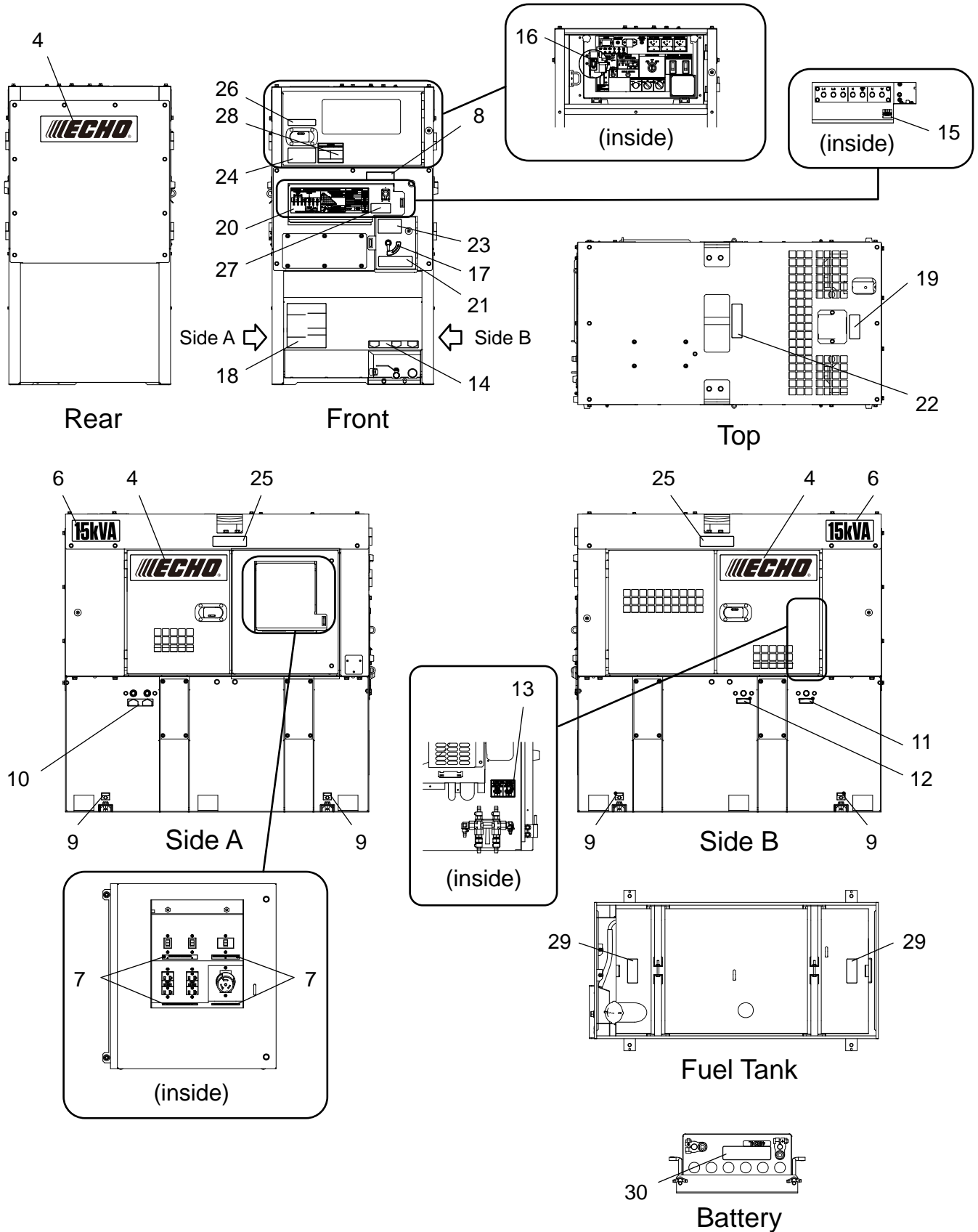
SHINDAIWA LABELS



SHINDAIWA LABELS

NO.	PART NUMBER	QTY.	DESCRIPTION
4	X504006320	2	LABEL,SHINDAIWA BRAND
5	M705001140	2	LABEL,KWIET POWER FEATURE
6	X524005820	2	LABEL,15KVA
7	X524006490	1	LABEL,CIRCUIT BREAKER/RECEPTACLE
8	M704002250	1	LABEL,TERMINAL COVER INSTRUCTIONS INST.
9	M707000380	4	LABEL,INST
10	M707000950	1	LABEL,FUEL RETURN INST
11	M707000790	1	LABEL,OIL DRAIN INST
12	M707000800	1	LABEL,WATER DRAIN INST
13	M709000430	1	LABEL,INST 3 WAY FUEL VALES
14	M709000030	1	LABEL,INST
15	M704003260	1	LABEL,REMOTE START INST.
16	M707000430	1	LABEL,FREQUENCY CHANGE INST.
17	M707000830	1	LABEL,OPEN-CLOSE INST
18	X505010910	1	LABEL,CAUTION/WARNING
19	X505007840	1	LABEL,CAUTION:GM SPEC LLC
20	X564000600	1	LABEL,CAUTION ELECTRIC SHOCK
21	X505007650	1	LABEL,WARNING/FIRE CAUTION
22	X505007550	1	LABEL,WARNING:INJURY CAUTION
23	X505008400	1	LABEL,EPA REGULATION C CAUTION
24	X505010400	1	LABEL,PROPOSITION65/OPERATING CAUTION
25	X505010920	2	LABEL,CAUTION: NO FORKS
26	X505010800	1	LABEL,CAUTION:THIS MACHICE STARTS
27	X564000370	1	LABEL,CAUTION/ATTENTION/PRO
28	X505011430	1	LABEL,DANGER:CARBON MONOXIDE POISONING
29	X505007820	2	LABEL,CAUTION
30	X505010410	1	LABEL,PROPOSITION65/BATTERIES CAUTION

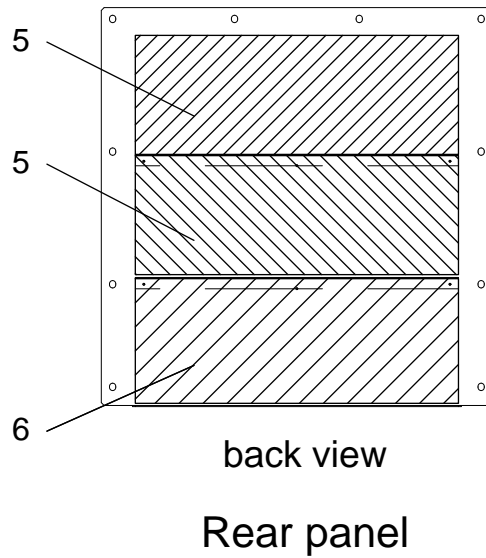
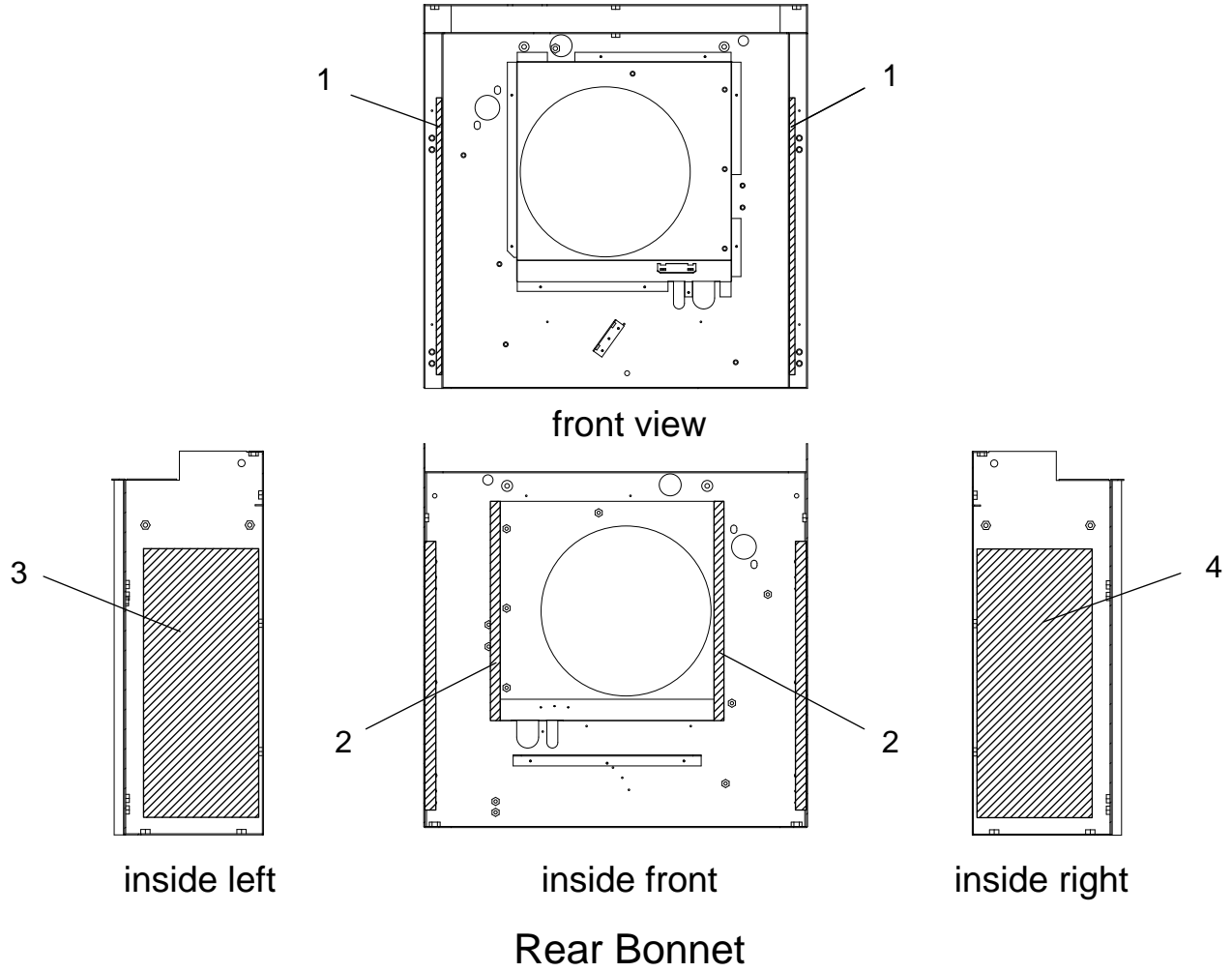
ECHO LABELS



ECHO LABELS

NO.	PART NUMBER	QTY.	DESCRIPTION
4	X502001500	3	HINGE
6	X586000200	2	LABEL,15KVA
7	X524006490	1	LABEL,CIRCUIT BREAKER/RECEPTACLE
8	M704002250	1	LABEL,TERMINAL COVER INSTRUCTIONS INST.
9	M707000380	4	LABEL,INST
10	M707000950	1	LABEL,FUEL RETURN INST
11	M707000790	1	LABEL,OIL DRAIN INST
12	M707000800	1	LABEL,WATER DRAIN INST
13	M709000430	1	LABEL,INST 3 WAY FUEL VALES
14	M709000030	1	LABEL,INST
15	M704003260	1	LABEL,REMOTE START INST.
16	M707000430	1	LABEL,FREQUENCY CHANGE INST.
17	M707000830	1	LABEL,OPEN-CLOSE INST
18	X505010910	1	LABEL,CAUTION/WARNING
19	X505007840	1	LABEL,CAUTION:GM SPEC LLC
20	X564000600	1	LABEL,CAUTION ELECTRIC SHOCK
21	X505007650	1	LABEL,WARNING/FIRE CAUTION
22	X505007550	1	LABEL,WARNING:INJURY CAUTION
23	X505008400	1	LABEL,EPA REGULATION C CAUTION
24	X505010400	1	LABEL,PROPOSITION65/OPERATING CAUTION
25	X505010920	2	LABEL,CAUTION: NO FORKS
26	X505010800	1	LABEL,CAUTION:THIS MACHICE STARTS
27	X564000370	1	LABEL,CAUTION/ATTENTION/PRO
28	X505011430	1	LABEL,DANGER:CARBON MONOXIDE POISONING
29	X505007820	2	LABEL,CAUTION
30	X505010410	1	LABEL,PROPOSITION65/BATTERIES CAUTION

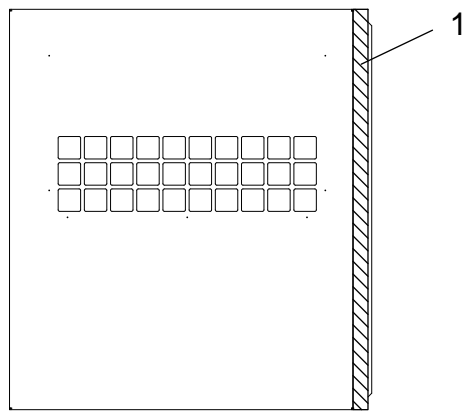
REAR ENCLOSURE FRAME INSULATION



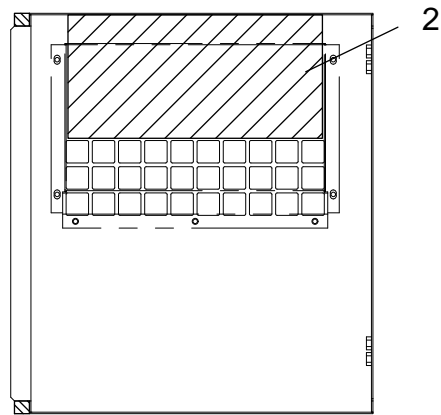
REAR ENCLOSURE FRAME INSULATION

NO.	PART NUMBER	QTY.	DESCRIPTION	
1	V541000860	2	SEAL,T15X10X510 REAR ENCLOSURE FRAME	REAR BONNET
2	V418000170	2	INSULATION,T20X18X400 REAR ENCLOSURE FRAME	REAR BONNET
3	A322000150	1	INSULATOR,T20X210X490 REAR ENCLOSURE FRAME MUFFLER	REAR BONNET
4	V413000360	1	INSULATION,T20X210X490 REAR ENCLOSURE FRAME	REAR BONNET
5	V902000060	2	INSULATION,T20X210X570 REAR PANEL	REAR PANEL
6	A322000250	1	INSULATOR,T3X220X570 MUFFLER REAR PANEL	REAR PANEL

ENCLOSURE FRAME FRONT DOOR AND AIR DUCT INSULATION

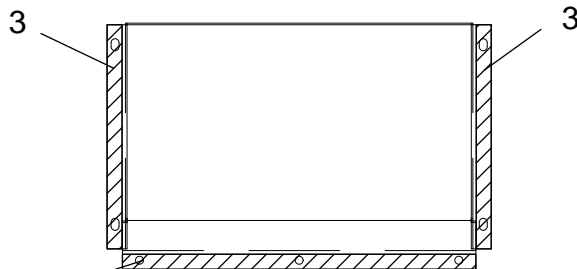


front view

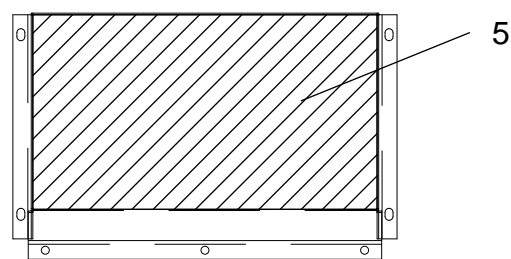


back view

Front door

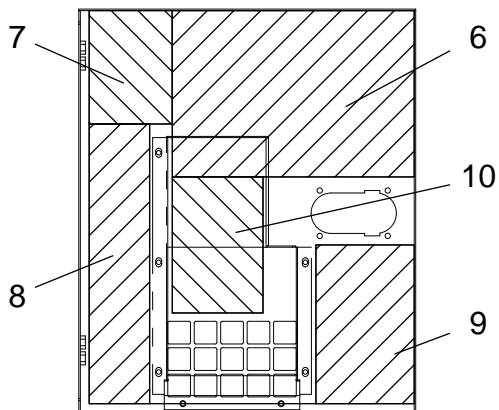


back view



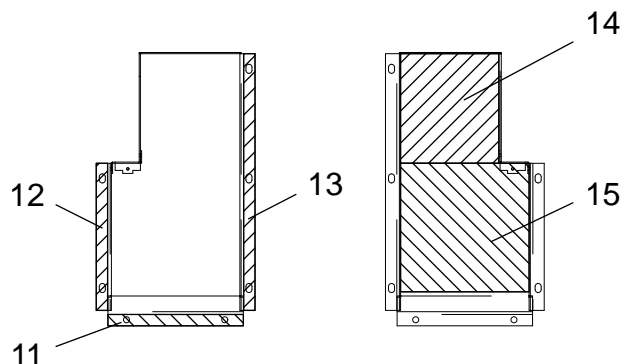
front view

Airduct : front door



back view

Rear door



back view

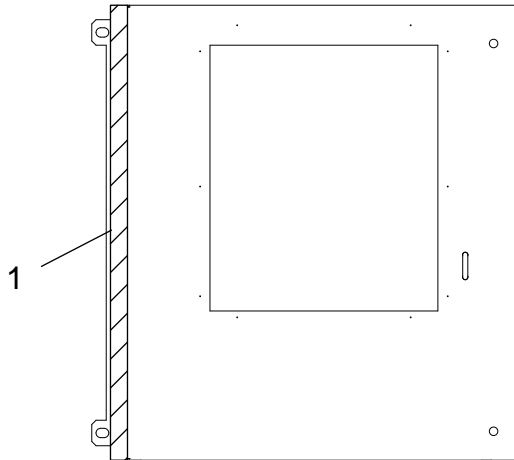
front view

Airduct : rear door

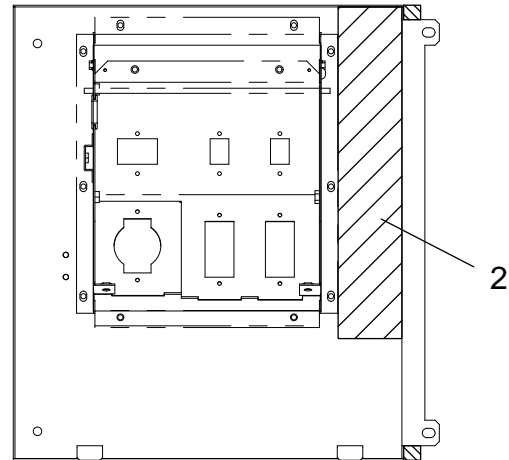
ENCLOSURE FRAME FRONT DOOR AND AIR DUCT INSULATION

NO.	PART NUMBER	QTY.	DESCRIPTION	
1	J414002370	1	SEAL,T10X20X535 ENCLOSURE FRAME FRONT DOOR	FRONT DOOR
2	V902000070	1	INSULATION,T20X165X340 FRONT DOOR	FRONT DOOR
3	V543000260	2	SEAL,T1.5X15X225 FROND DOOR AIR DUCT	AIR DUCT :FRONT DOOR
4	V544000190	1	SEAL,T1.5X15X355 FRONT DOOR AIR DUCT	AIR DUCT :FRONT DOOR
5	V902000080	1	INSULATION,T20X190X345 FRONT DOOR AIR DUCT	AIR DUCT :FRONT DOOR
6	V902000090	1	INSULATION,T20X220X320 ENCLOSURE FRAME REAR DOOR	REAR DOOR
7	V902000100	1	INSULATION,T20X110X150 ENCLOSURE FRAME REAR DOOR	REAR DOOR
8	V902000110	1	INSULATION,T20X80X370 ENCLOSURE FRAME REAR DOOR	REAR DOOR
9	V902000120	1	INSULATION,T20X130X210 ENCLOSURE FRAME REAR DOOR	REAR DOOR
10	V902000130	1	INSULATION,T10X120X180 ENCLOSURE FRAME REAR DOOR	REAR DOOR
11	V544000200	1	SEAL,T1.5X15X180 ENCLOSURE FRAME REAR DOOR AIR DUCT	AIR DUCT :REAR DOOR
12	V544000210	1	SEAL,T1.5X15X195 ENCLOSURE FRAME REAR DOOR AIR DUCT	AIR DUCT :REAR DOOR
13	V544000220	1	SEAL,T1.5X15X340 ENCLOSURE FRAME REAR DOOR AIR DUCT	AIR DUCT :REAR DOOR
14	V902000140	1	INSULATION,T20X130X145 ENCLOSURE FRAME REAR DOOR AIR DUCT	AIR DUCT :REAR DOOR
15	V902000150	1	INSULATION,T10X170X170 ENCLOSURE FRAME REAR DOOR AIR DUCT	AIR DUCT :REAR DOOR

ENCLOSURE FRAME CONTROL BOX DOOR AND AIR DUCT INSULATION

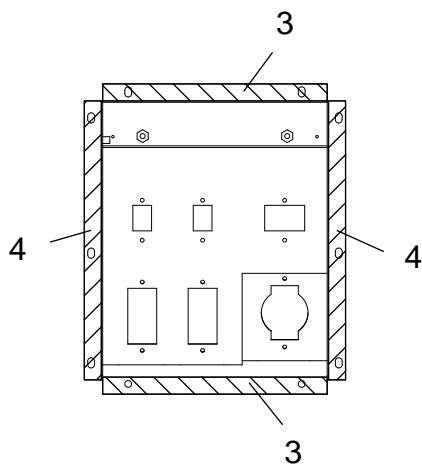


front view



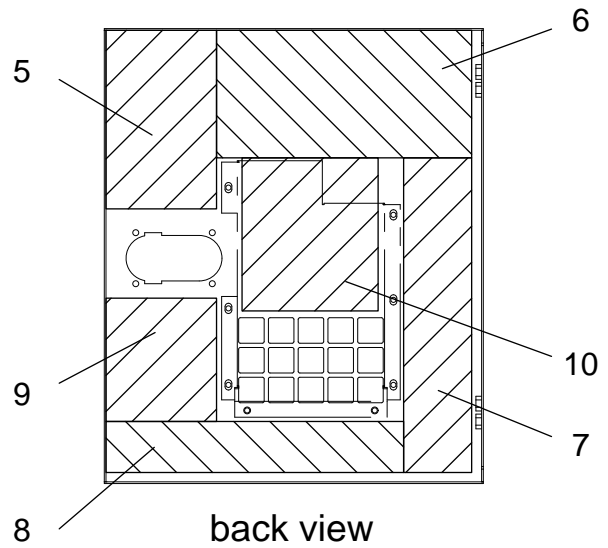
back view

Front door



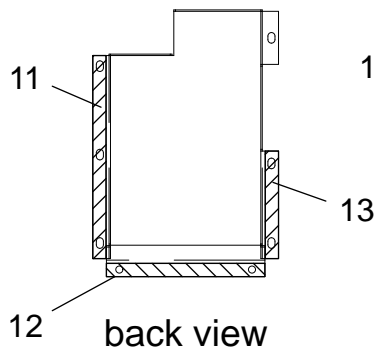
back view

Control box : front door

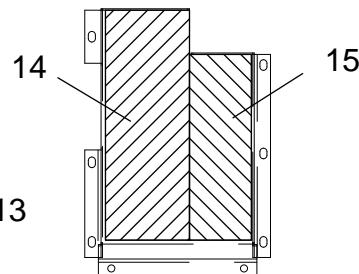


back view

Rear door



back view



front view

Airduct : rear door

ENCLOSURE FRAME CONTROL BOX DOOR AND AIR DUCT INSULATION

NO.	PART NUMBER	QTY.	DESCRIPTION	
1	J414002370	1	SEAL,T10X20X535 ENCLOSURE FRAME FRONT DOOR	FRONT DOOR
2	V902000160	1	INSULATION,T20X75X390 ENCLOSURE FRAME FRONT DOOR	FRONT DOOR
3	V544000170	2	SEAL,T1.5X20X265 ENCLOSURE FRAME FRONT DOOR AIR DUCT	AIR DUCT :FRONT DOOR
4	V544000230	2	SEAL,T1.5X20X330 ENCLOSURE FRAME FRONT DOOR AIR DUCT	AIR DUCT :FRONT DOOR
5	V902000120	1	INSULATION,T20X130X210 ENCLOSURE FRAME REAR DOOR	REAR DOOR
6	V902000170	1	INSULATION,T20X150X300 ENCLOSURE FRAME REAR DOOR	REAR DOOR
7	V902000110	1	INSULATION,T20X80X370 ENCLOSURE FRAME REAR DOOR	REAR DOOR
8	V902000180	1	INSULATION,T20X60X350 ENCLOSURE FRAME REAR DOOR	REAR DOOR
9	V902000140	1	INSULATION,T20X130X145 ENCLOSURE FRAME REAR DOOR AIR DUCT	REAR DOOR
10	V902000190	1	INSULATION,T10X160X180 ENCLOSURE FRAME REAR DOOR	REAR DOOR
11	V544000240	1	SEAL,T1.5X15X230 ENCLOSURE FRAME REAR DOOR AIR DUCT	AIR DUCT :REAR DOOR
12	V544000250	1	SEAL,T1.5X15X180 ENCLOSURE FRAME REAR DOOR AIR DUCT	AIR DUCT :REAR DOOR
13	V544000260	1	SEAL,T1.5X15X120 ENCLOSURE FRAME REAR DOOR AIR DUCT	AIR DUCT :REAR DOOR
14	V902000200	1	INSULATION,T20X95X260 ENCLOSURE FRAME REAR DOOR AIR DUCT	AIR DUCT :REAR DOOR
15	V902000210	1	INSULATION,T10X70X210 ENCLOSURE FRAME REAR DOOR AIR DUCT	AIR DUCT :REAR DOOR