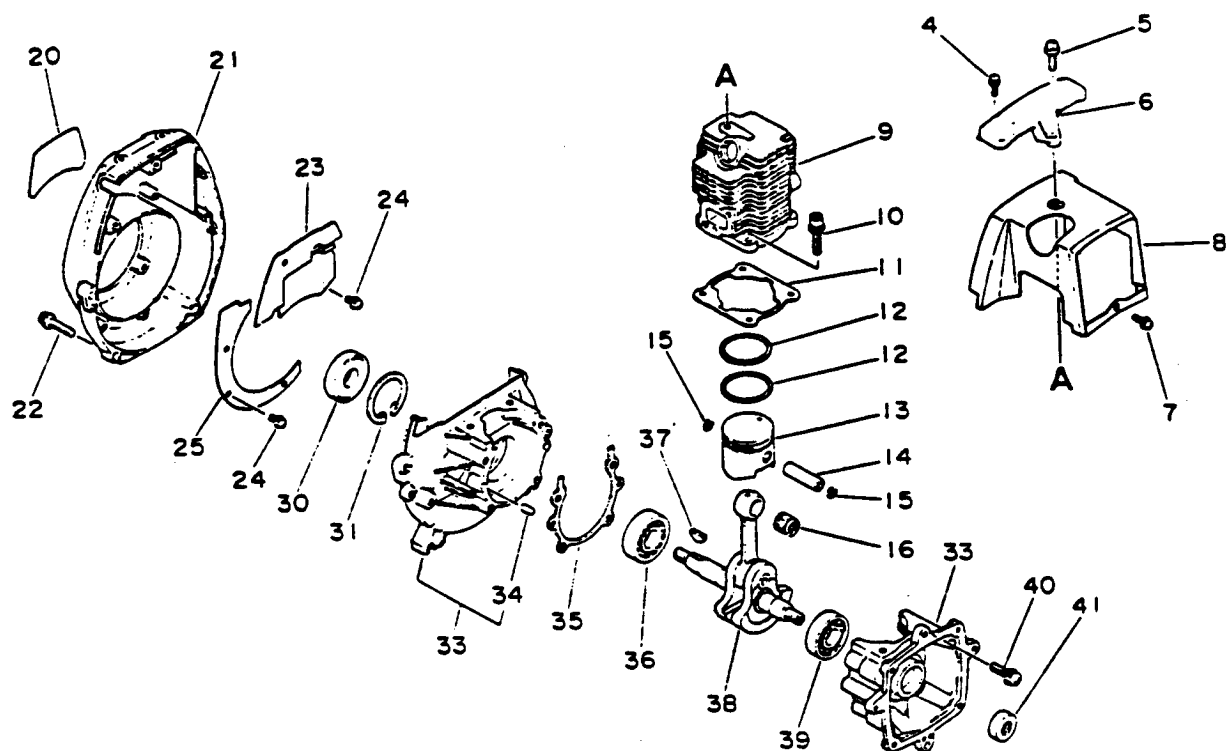




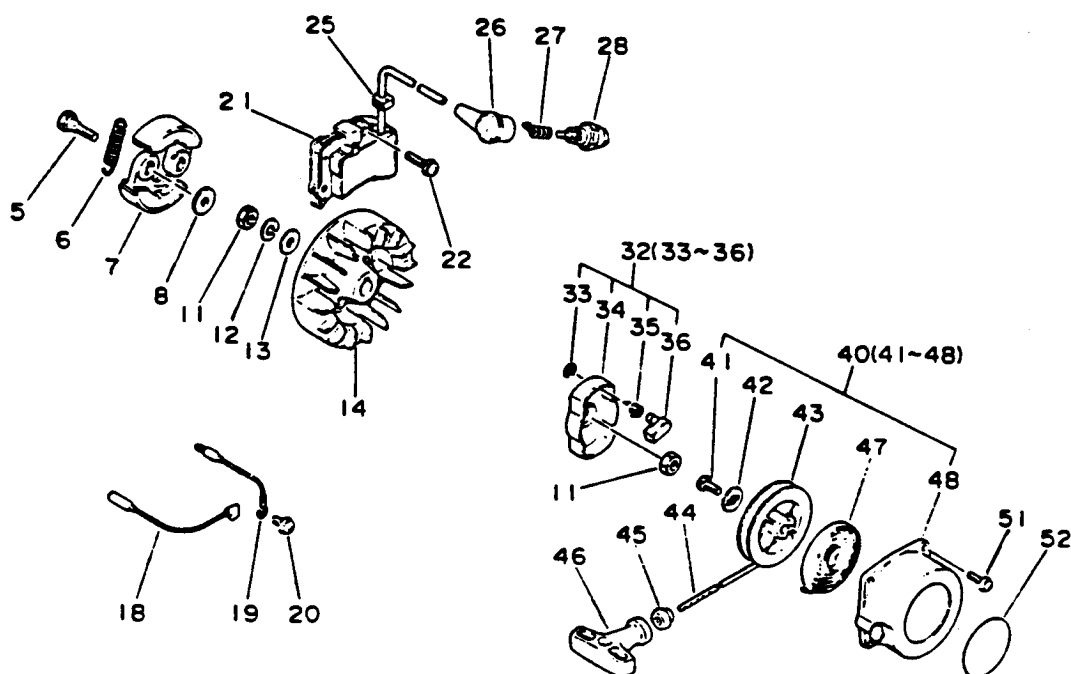
# **PARTS CATALOGUE**

## **ECHO TRIMMER/ BRUSHCUTTER SRM-2501**



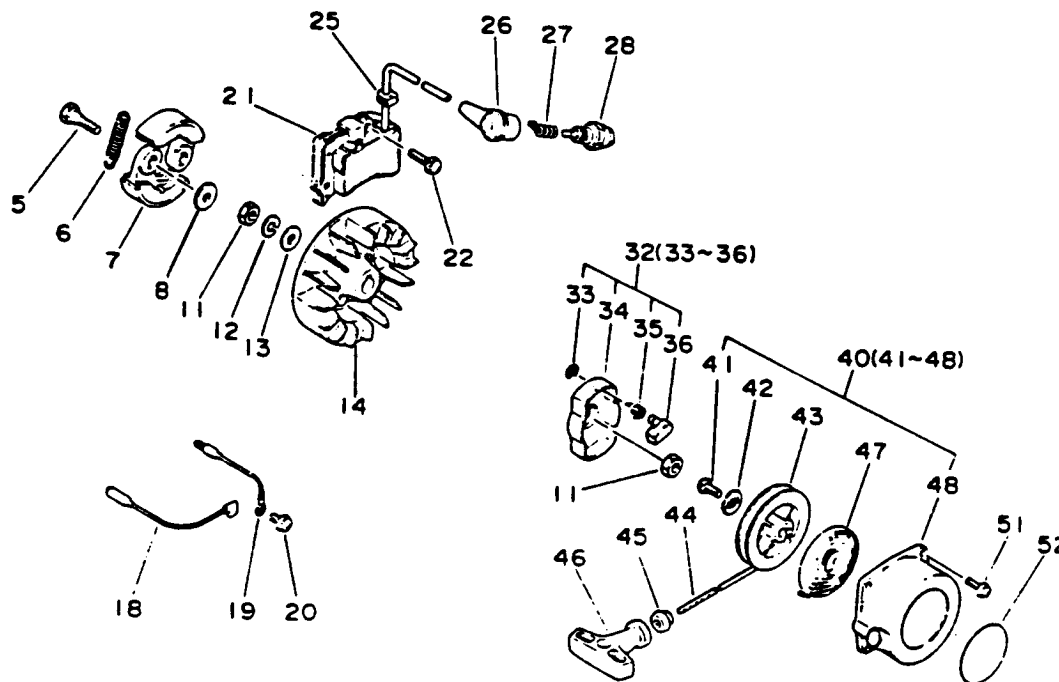
KEY LV	PART NUMBER	Q'TY	DESCRIPTION	APPLICATION	REMARKS	INF. NR
4	900238-04014	2	SCREW 4#14			
5	900238-05016	1	SCREW 5#16			
6	159905-40930	1	GUARD, TOP			
7	900238-04010	1	SCREW 4#10			
8	101514-40930	1	COVER, CYLINDER (BS)			
9	101011-22330	1	CYLINDER			
10	900162-05020	4	BOLT, H.S. 5#20			
* 11	USE KIT	1	GASKET, CYL. BASE			
12	100011-05330	2	RING, PISTON			
13	100010-22330	1	PISTON			
14	100013-22330	1	PIN, PISTON			
15	100015-04630	2	CIRCLIP, PISTON PIN			
16	100012-22330	1	BEARING, NEEDLE			
20	890115-44830	1	LABEL, MODEL			
21	101511-40930	1	COVER, FAN (BS)			
22	900238-05020	4	SCREW 5#20			
23	101534-40930	1	PLATE, GUIDE (A)			
24	900238-04008	5	SCREW 4#8			
25	101541-40930	1	PLATE, GUIDE (B)			
30	100212-03930	1	OILSEAL			
31	900702-00032	1	CIRCLIP 32			
33	100200-22331	1	CRANKCASE SET			
34	* 100215-03930	2	PIN, DOWEL			
* 35	USE KIT	1	GASKET, CRANKCASE			
36	900810-36201	1	BEARING, BALL 6201			
37	100142-00310	1	KEY, WOODRUFF (M)			
38	100100-22430	1	CRANKSHAFT ASS'Y			
39	900800-36001	1	BEARING, BALL 6001			
40	900238-05025	4	SCREW 5#25			
41	100213-05530	1	OILSEAL			

\* Use Gasket Kit, P/N 889000-2723 0

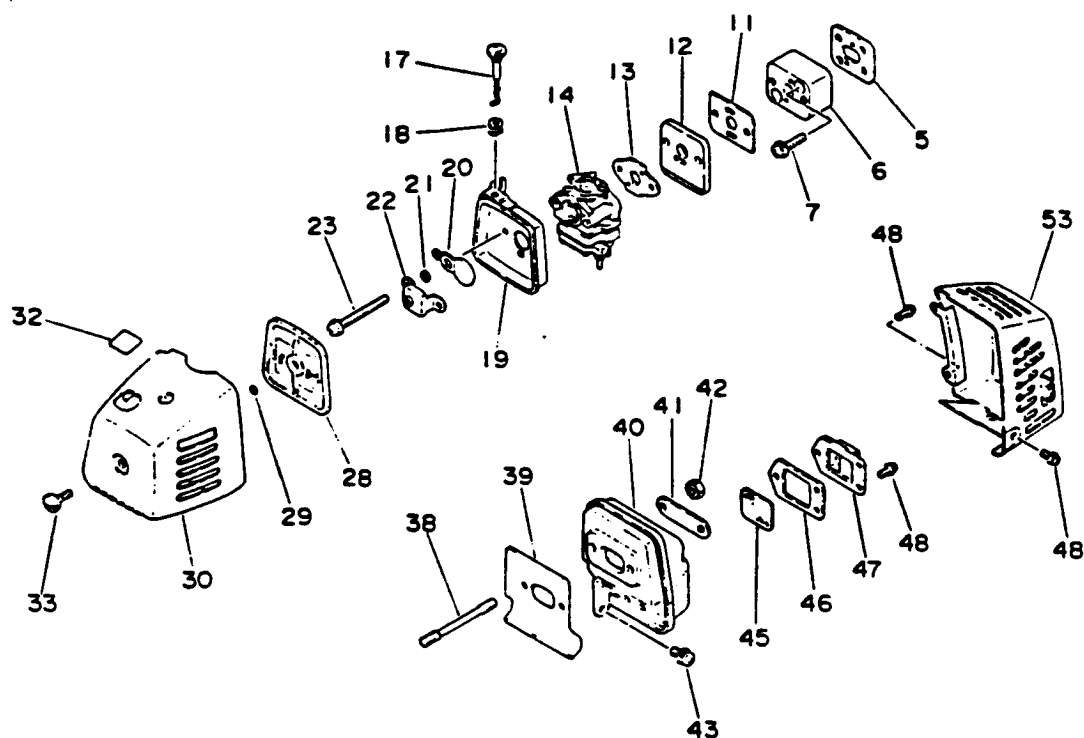


KEY LV	PART NUMBER	Q'TY	DESCRIPTION	APPLICATION	REMARKS	INF. NR
5	175046-22332	2	BOLT, CLUTCH			
6	175018-05535	1	SPRING, CLUTCH			
7	175009-05531	2	SHOE, CLUTCH			
8	175048-05530	2	WASHER (1)			
11	900502-00008	2	NUT 8 (3N)			
12	900605-00008	1	WASHER, SPRING 8			
13	900600-00008	1	WASHER 8			
14	156801-22330	1	FLYWHEEL			
18	162022-27230	1	LEAD, GROUND			
19	162014-27230	1	LEAD, GROUND			
20	900238-05010	1	SCREW 5*10			
21	156601-40930	1	COIL, IGNITION			
22	900238-05020	2	SCREW 5*20			
25	156112-40630	1	GROMMET			
26	159012-03433	1	CAP, SPARK PLUG			
27	159011-03432	1	COIL, SPARK PLUG CAP			
28	159010-10630	1	PLUG, SPARK (BPM-7A)			
28	159010-10230	1	PLUG, SPARK (BPMR-7A) (Canadian Models)			

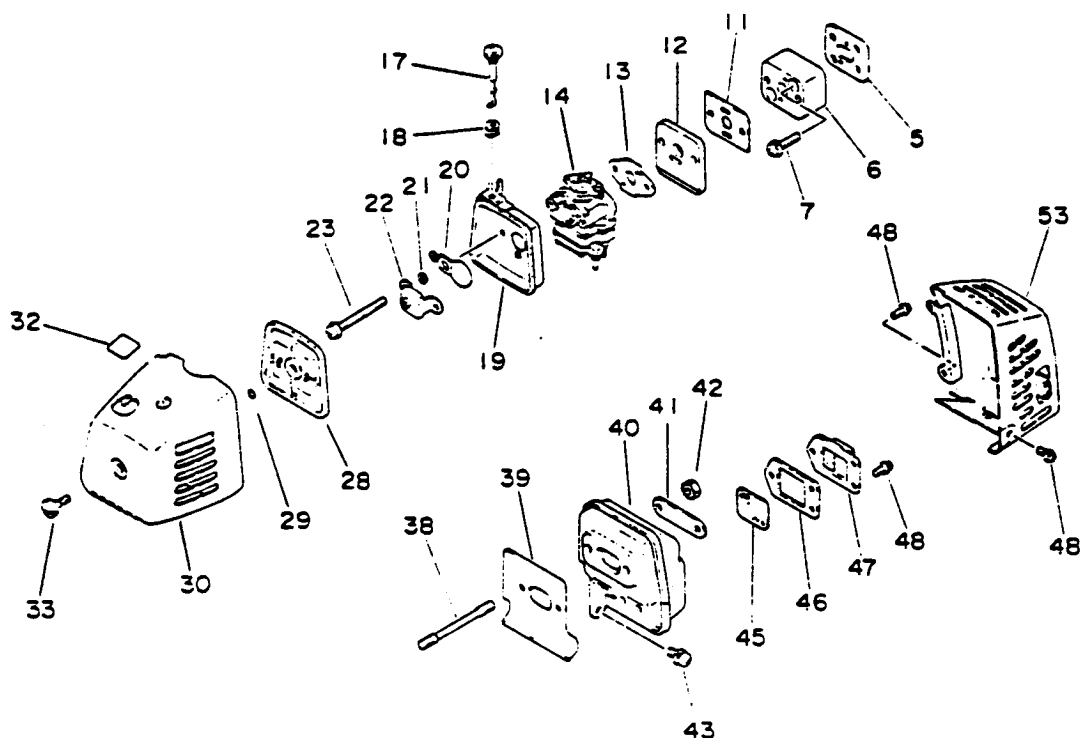
## SRM-2501 (2)



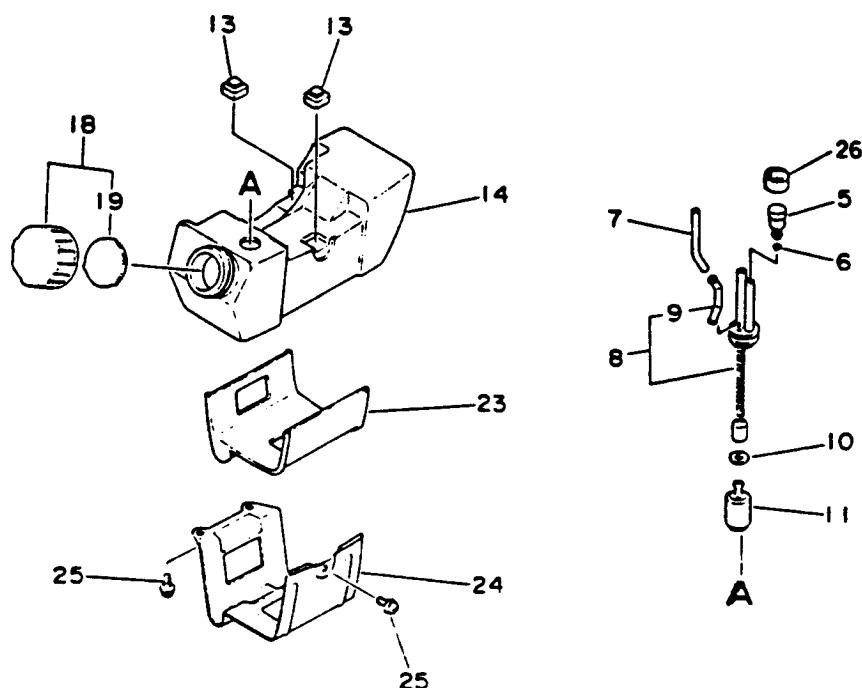
KEY	LV	PART NUMBER	Q'TY	DESCRIPTION	APPLICATION	REMARKS	INF. NR
32		177202-40630	1	CATCHER ASS'Y, PAWL			
33	+	900700-00006	1	E-RING 6			
34	+	177210-40630	1	CATCHER, PAWL			
35	+	177234-40630	1	SPRING, RETURN			
36	+	177218-40630	1	PAWL, STARTER			
40		177200-40930	1	STARTER ASS'Y (BS)			
41	+	177236-40630	1	SCREW			
42	+	177214-40630	1	WASHER			
43	+	177215-40630	1	DRUM, STARTER			
44	+	177226-03930	1	ROPE, STARTER			
45	+	177227-05530	1	GUIDE, ROPE			
46	+	177228-06530	1	GRIP, STARTER			
47	+	177220-40630	1	SPRING, REWIND			
48	+	177232-40930	1	CASE, STARTER			
51		900238-04014	4	SCREW 4x14			
52		890112-40930	1	LABEL, ECHO			



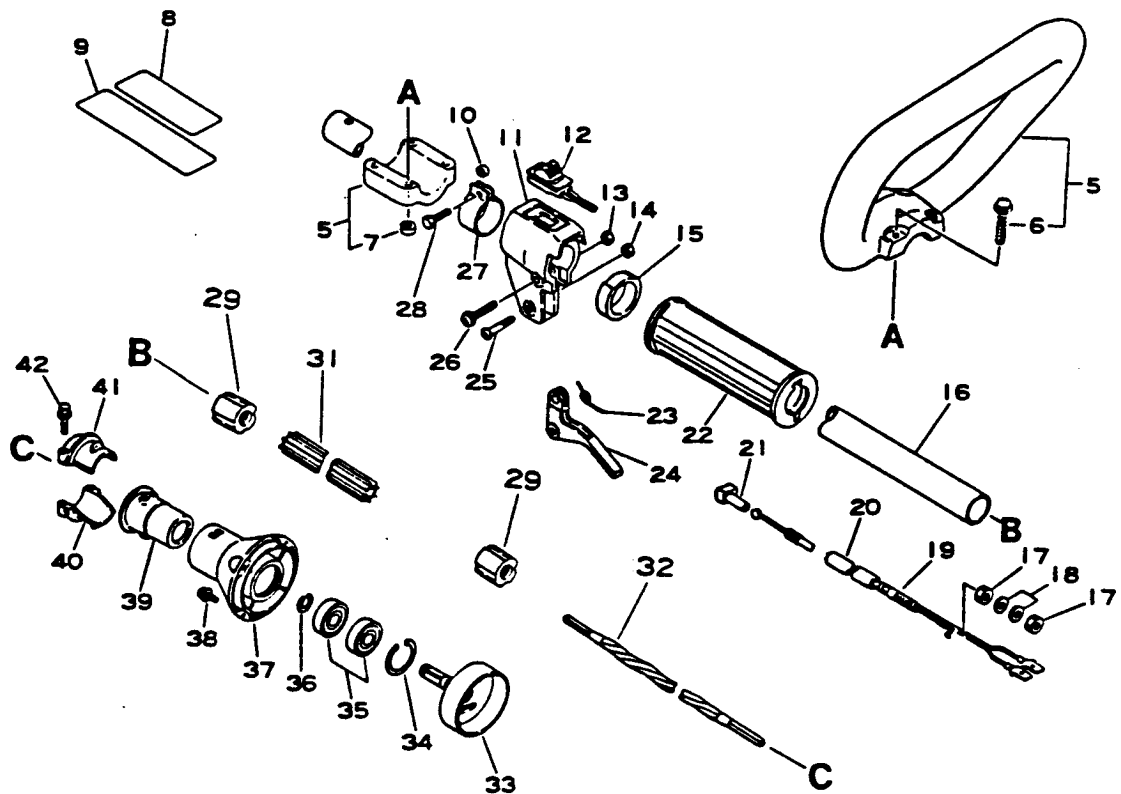
KEY LV	PART NUMBER	Q'TY	DESCRIPTION	APPLICATION	REMARKS	INF. NR
5	130010-22330	1	GASKET, INSULATOR			
6	130007-40930	1	INSULATOR			
7	900238-05022	2	SCREW 5x22			
11	130022-40930	1	GASKET, INSULATOR			
12	130026-41030	1	PLATE			
13	130016-40930	1	GASKET, CARBURETOR			
14	123000-41030	1	CARBURETOR ASS'Y			
17	178510-41030	1	ROD, CHOKE			
18	178810-05230	1	BUSHING			
19	130307-40930	1	CASE, AIR CLEANER			
20	178515-40630	1	SHUTTER, CHOKE			
21	178516-00830	2	SPACER			
22	129006-40930	1	PLATE			
23	900238-05050	2	SCREW 5x50			



KEY	LV	PART NUMBER	Q'TY	DESCRIPTION	APPLICATION	REMARKS	INF. NR
28		130310-40930	1	FILTER, AIR			
30		130302-40930	1	COVER ASS'Y, AIR CLE			
29	+	900720-00004	1	O-RING (P-4)			
33	+	130415-40630	1	SCREW			
32		890121-40630	1	DECAL, CHOKE			
32		890121-12330	1	LABEL, CHOKE (Canadian Models)			
38		101014-22330	2	STUD (5*60)			
39		145510-22330	1	GASKET, MUFFLER			
40		145806-27230	1	MUFFLER (BL)			
41		145642-22330	1	WASHER			
42		433020-00830	2	LOCKNUT 5			
43		900238-05010	1	SCREW 5*10			
45		145862-27230	1	SCREEN, MUFFLER			
46		145866-27230	1	GASKET, MUFFLER LID			
47		145905-40930	1	HOLDER, SCREEN			
48		900238-04008	6	SCREW 4*8			
53		145906-40931	1	COVER, MUFFLER			

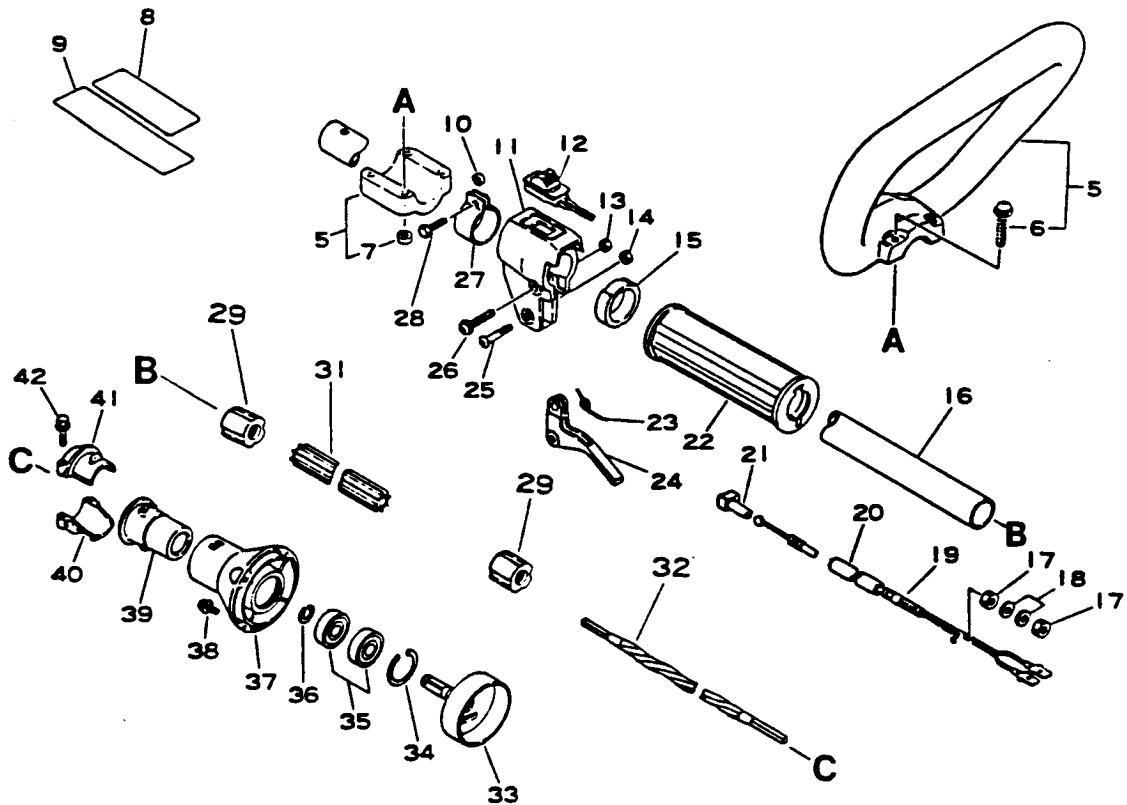


KEY	LV	PART NUMBER	Q'TY	DESCRIPTION	APPLICATION	REMARKS	INF. NR
5		131300-40630	1	VENT			
6		130111-00530	1	CLIP			
7		129028-40931	1	PIPE			
8		132002-40930	1	PIPE, FUEL			
9	+	132021-40630	1	CONNECTOR, FUEL PIPE			
10		900603-00005	1	WASHER 5			
11		131200-21330	1	STRAINER, FUEL			
13		131925-22330	3	CUSHION			
14		131010-40930	1	TANK, FUEL			
18		131004-40930	1	CAP ASS'Y, FUEL TANK			
19	+	131016-40930	1	GASKET, F TANK CAP			
23		131924-40930	1	CUSHION			
24		305110-40930	1	STAND	(BL)		
25		900238-05010	3	SCREW 5x10			
26		131328-40630	1	COVER, VENT			

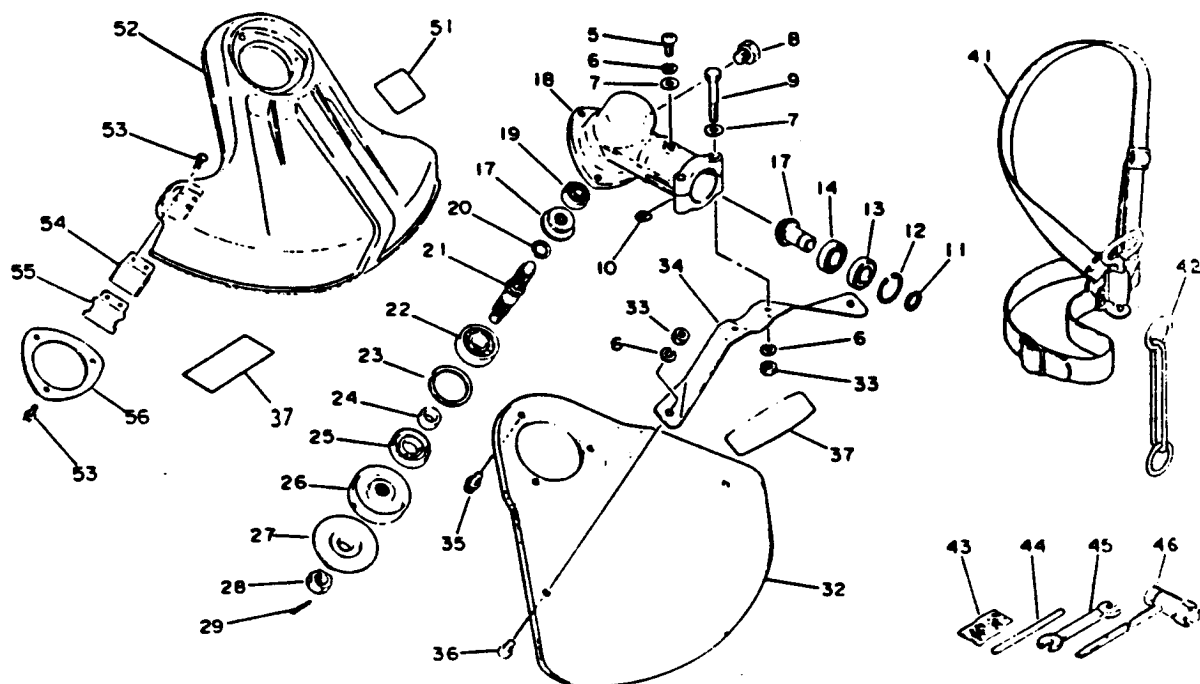


KEY	LV	PART NUMBER	Q'TY	DESCRIPTION	APPLICATION	REMARKS	INF. NR
5		351201-40830	1	HANDLE ASSY, LOOP			
6	+	900242-05035	4	SCREW 5*35			
7	+	900500-00005	4	NUT 5			
8		890177-09130	1	LABEL, CAUTION			
C 8		890317-44730	1	LABEL, CAUTION (Canadian Models)			
9		890160-44730	1	LABEL, CAUTION			
C 9		890331-24330	1	LABEL, CAUTION (Canadian Models)			
10		699012-03330	1	SPACER			
11		178024-44730	1	BRACKET, THROTTLE			
12		163400-27230	1	SWITCH, IGNITION			
13		900500-00005	1	NUT 5			
14		433020-00830	1	LOCKNUT 5			
16		610206-44730	1	HOUSING ASSY, D.SFT			
29	+	610246-44730	2	STOPPER			
31	+	610217-44730	1	LINER, FLEXIBLE			
17		900502-00006	2	NUT 6 (3N)			
18		900600-00006	2	WASHER 6			
19		178001-40930	1	WIRE, THROTTLE			
20		178127-40930	1	TUBE			
21		178048-05630	1	HOLDER, THR. WIRE			
22		351012-40930	1	GRIP			
23		178043-06930	1	SPRING, THR. RETURN			
24		178010-05631	1	CONTROL, THROTTLE			
25		178110-05330	1	SCREW			
26		900242-05030	1	SCREW 5*30			



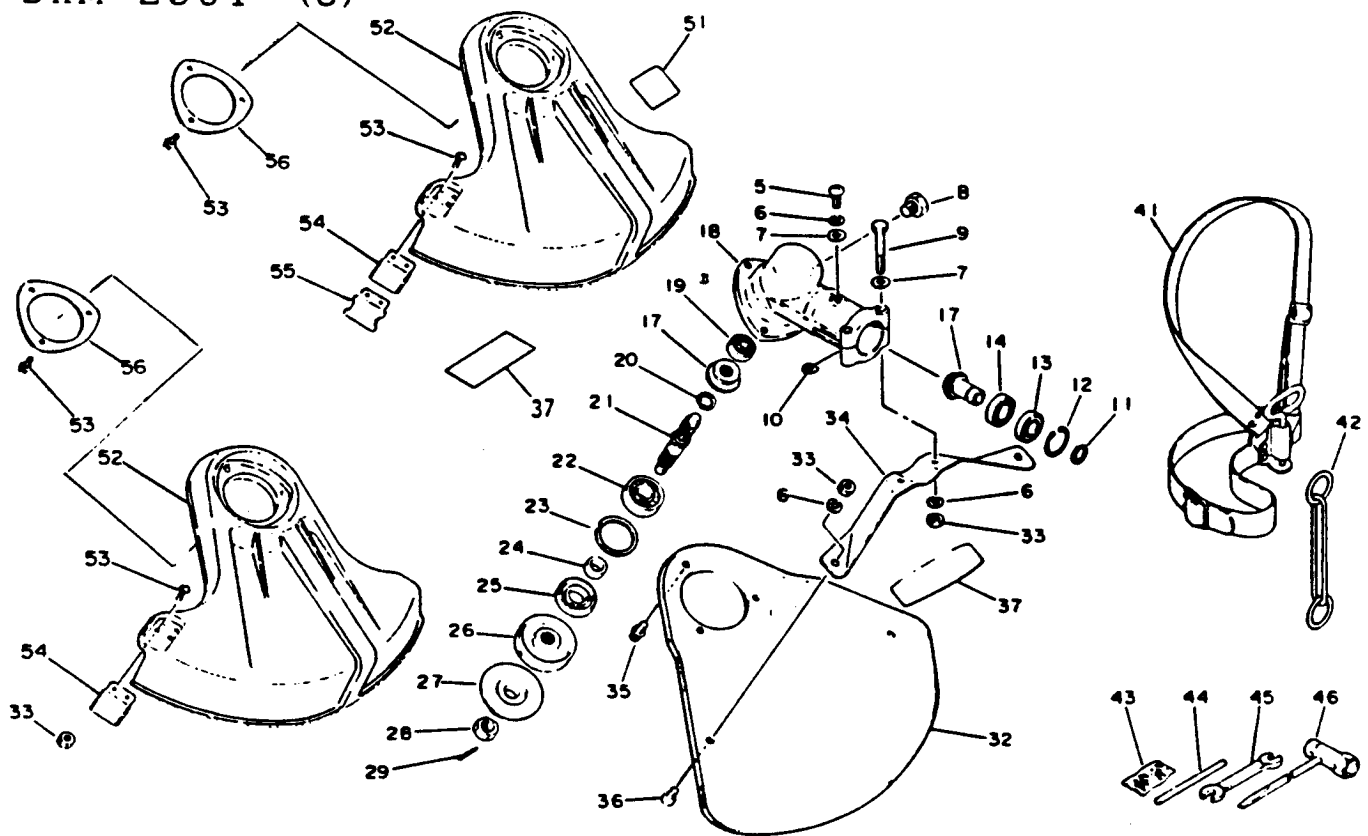


KEY	LV	PART NUMBER	Q'TY	DESCRIPTION	APPLICATION	REMARKS	INF. NR
27		301207-08930	1	HOOK			
28		900100-05018	1	BOLT 5#18			
32		610013-44730	1	SHAFT, FLEXIBLE			
33		175005-44830	1	DRUM, CLUTCH			
34		900702-00028	1	CIRCLIP 28			
35		900808-06001	2	BEARING, BALL 6001			
36		900701-00012	1	CIRCLIP 12			
37		610205-40830	1	CASE, CLUTCH (BS)			
38		900238-05016	4	SCREW 5#16			
39		610910-27832	1	CUSHION			
40		610923-27432	1	HOLDER			
41		610922-27432	1	HOLDER			
42		900142-05025	2	BOLT 5#25			

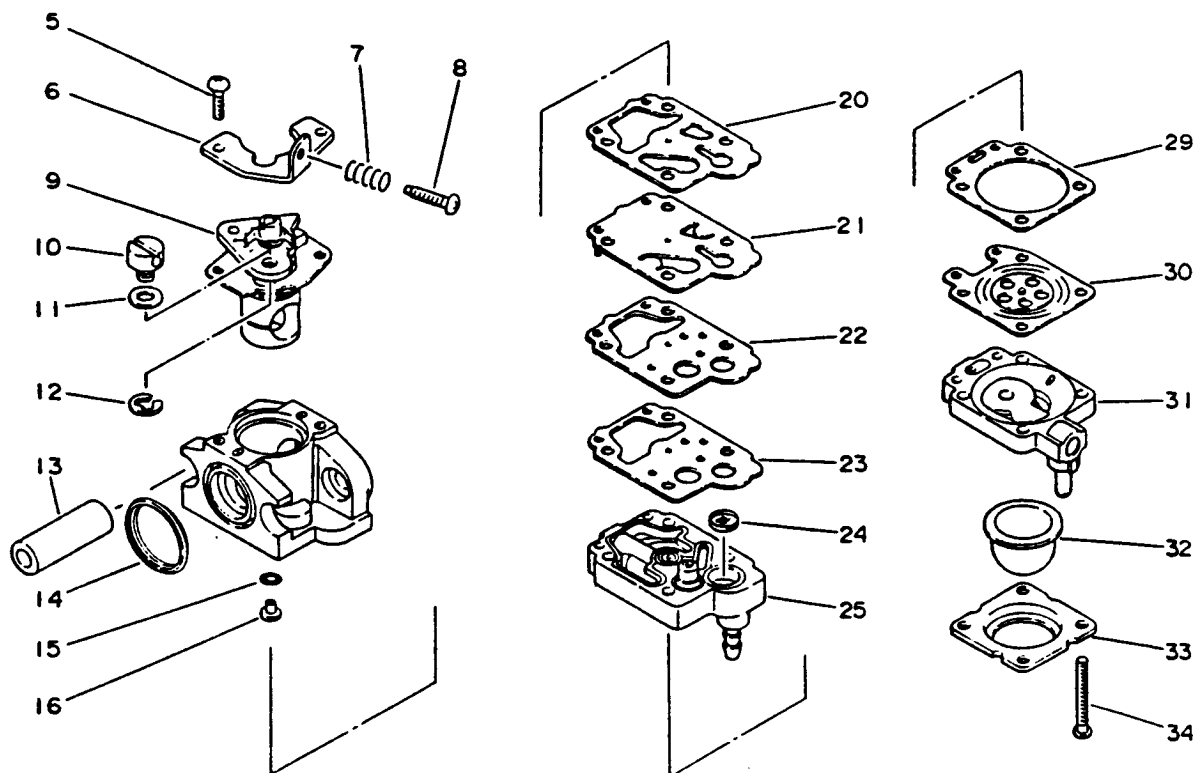


KEY	LV	PART NUMBER	Q'TY	DESCRIPTION	APPLICATION	REMARKS	INF. NF
		610402-40930	1	HOUSING ASSY GEAR			
	5	+ 900220-05010	1	SCREW 5#10			
	6	+ 900605-00005	3	WASHER, SPRING 5			
	7	+ 900600-00005	3	WASHER 5			
	8	+ 900100-08008	1	BOLT 8#8			
	9	+ 900100-05035	2	BOLT 5#35			
	10	+ 610239-04130	2	WASHER, SHIM			
	11	+ 900706-00012	1	CIRCLIP 12			
	12	+ 900702-00022	1	CIRCLIP 22			
	13	+ 900858-06900	1	BEARING, BALL 6900			
	14	+ 900855-06900	1	BEARING, BALL 6900			
	17	+ 610300-44830	1	GEAR SET			
	18	+ 610460-27430	1	HOUSING, GEAR			
	19	+ 900800-00609	1	BEARING, BALL 609			
	20	+ 900706-00010	1	CIRCLIP 10			
	21	+ 610360-08931	1	SHAFT, P.T.O.			
	22	+ 900810-06201	1	BEARING, BALL 6201			
	23	+ 900702-00032	1	CIRCLIP 32			
	24	+ 610315-07130	1	SPACER			
	25	+ 610413-07130	1	OILSEAL			
	26	+ 610338-08930	1	PLATE, ADAPTER (U)			
	27	+ 610314-04131	1	PLATE, ADAPTER (L)			
	28	+ 900511-00010	1	NUT 10 (L-H)			
	29	+ 900300-20022	1	PIN, SPLIT 2#22			
	33	+ 900500-00005	2	NUT 5			

SRM-2501 (6)



KEY	LV	PART NUMBER	Q'TY	DESCRIPTION	APPLICATION	REMARKS	INF. NR
32		699000-20330	1	SHIELD ASS'Y (BS)			
6	+	900605-00005	2	WASHER, SPRING 5			
33	+	900500-00005	2	NUT 5			
34	+	699015-08930	1	BRACKET, SHIELD (BS)			
35	+	900242-05010	3	SCREW 5#10			
36	+	900220-05008	2	SCREW 5#8			
37		890138-44330	2	LABEL, ECHO			
41		301000-24330	1	HARNESS ASS'Y			
42	+	301305-24330	1	LINK			
43		898502-01130	1	PIN 2#22 (W/POUCH)			
44		897518-01131	1	LOCKING TOOL			
45		895112-00330	1	SPANNER 8#10			
46		895410-08030	1	WRENCH, W/S. DRIVER			
51		890177-40730	1	LABEL, CAUTION			
C51		890352-40830	1	LABEL, CAUTION (Canadian Models)			
52		699000-40830	1	SHIELD ASSEMBLY			
53	+	900242-05016	5	SCREW 5#16			
54	+	699016-23231	1	CUTTER			
55	+	699212-23230	1	PROTECTOR			
56	+	699018-40830	1	BRACKET, SHIELD			
C52		699000-40930	1	SHIELD ASSY (Canadian Models)			
C33	+	900500-00005	2	NUT 5	( " " )		
C53	+	900242-05016	2	SCREW 5#16	( " " )		
C54	+	699016-44330	1	CUTTER	( " " )		
C56	+	699018-40830	1	BRACKET, SHIELD	( " " )		



KEY LV	PART NUMBER	Q'TY	DESCRIPTION	APPLICATION	REMARKS	INF. NR
	123000-41030	1	CARBURETOR ASS'Y			
5	+ 123114-40630	1	SCREW			
6	+ 123128-40630	1	BRACKET, IDLE ADJUST			
7	+ 123133-26030	1	SPRING, IDLE ADJUST			
8	+ 123134-40030	1	SCREW, IDLE ADJUST			
9	+ 123116-40630	1	VALVE, THROTTLE			
10	+ 123172-26030	1	SWIVEL			
11	+ 123149-26030	1	WASHER			
12	+ 123173-07930	1	CLIP			
13	+ 123158-40630	1	SLEEVE, MOUNTING			
14	+ A B	1	RING, PACKING			
15	+ A	1	O-RING			
16	+ A	1	JET			
20	+ A B	1	GASKET, PUMP			
21	+ A B	1	DIAPHRAGM, PUMP			
22	+ 123160-40630	1	PLATE, PUMP			
23	+ A B	1	GASKET, PLATE			
24	+ A	1	SCREEN, INLET			
25	+ A	1	BODY ASS'Y, PUMP			
29	+ A B	1	GASKET, M. DIAPHRAGM			
30	+ A B	1	DIAPHRAGM, METERING			
31	+ 123180-40630	1	BODY ASS'Y, AIRPURGE			
32	+ 123181-40630	1	PUMP, PRIMER			
33	+ 123142-Q2960	1	COVER, PRIMER PUMP			
34	+ 123110-40630	4	SCREW, PUMP COVER			

(A) Use Carburetor repair kit : 123100-40930

(B) Use Carburetor diaphragm/gasket kit : 123101-40630