



SRAC-200 FITS MODELS:

- PAS-2100
- PAS-210/211
- PAS-230/231
- PAS-260/261
- SRM-200, AE, BE, CE
- SRM-210/211, i, SB, U
- SRM-230/231, S, U
- SRM-250E
- SRM-260/261, SB, U
- SRM-310/311, U
- SRM-1500, A
- SRM-1501
- SRM-2100
- SRM-2110
- SRM-2100, SB
- SRM-2201
- SRM-2300
- SRM.2301
- SRM-2310
- SRM-2400, SB
- SRM-2410
- SRM-2450
- SRM-2501
- SRM-2502
- SRM-2510
- SRM-3100
- SRM-3110

SRAC-300 FITS MODELS:

- SRM-200D, DA, DB
- SRM-300AE, AE/1, E, E/1

SRAC-400 FITS MODELS:

- SRM-340
- SRM-400AE, BE, E
- SRM-3000
- SRM-3001
- SRM-3010
- SRM-3400
- SRM-3800
- SRM-4600

**PARTS CATALOG
CULTIVATOR
ATTACHMENT**

**MODEL: SRAC-200
SRAC-300
SRAC-400**

**No Longer Available
MODEL: RMHC-300
SRAC-2000
SRAC-2500**

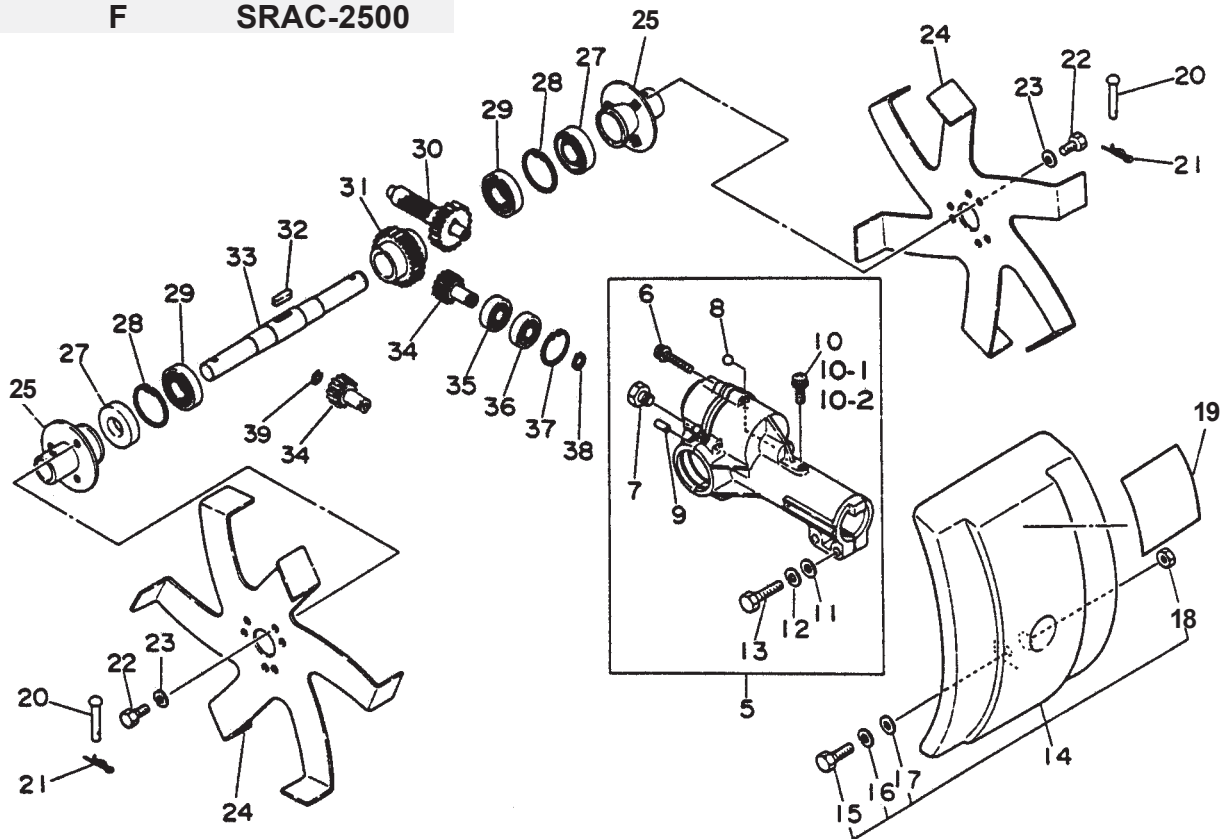
ECHO, INCORPORATED

400 Oakwood Road Lake Zurich, Illinois 60047

WWW.ECHO-USA.COM

No Longer Available: SRAC-2000, 2500, RMHC-300

WITH ITEM #	FOR MODEL
A	SRAC-200
B	SRAC-300
C	RMHC-300
D	SRAC-400
E	SRAC-2000
F	SRAC-2500



No Longer Available: SRAC-2000, 2500, RMHC-300

ITEM	PART NUMBER	QTY	DESCRIPTION	REMARKS
5A	60540111050	1	HOUSING, GEAR	INCLUDES ITEMS 6 - 13
5B,C,D	60540111150	1	HOUSING, GEAR	NOT AVAILABLE
5E,F	60540111950	1	HOUSING, GEAR	INCLUDES ITEMS 6 - 13
6	90024204025	5	SCREW 4X25	
7	90010008008	1	BOLT 8X8	
8	90073101004	1	BALL, STEEL	
9	60543011050	2	PIN, DOWEL	
10	90022005014	1	SCREW 5X14	
10-1	90060500005	1	WASHER, SPRING 5	
10-2	90060000005	1	WASHER 5	
11	90060000006	2	WASHER 6	
12	90060500006	2	WASHER, SPRING 6	
13	90010006025	2	BOLT 6X25	
14A,E,F	69400011050	1	SHIELD	INCLUDES ITEMS 15 - 18
14B,C,D	69400011150	1	SHIELD	INCLUDES ITEMS 15 - 18
15	90010006020	1	BOLT 6 X 20	
16	90060500006	1	WASHER, SPRING 6	
17	90060000006	1	WASHER 6	
18	90050000006	1	NUT 6	
19	89031711051	1	LABEL	
20	60561111050	2	PIN	
21	60561211050	2	PIN, COTTER	
22	90010006010	6	BOLT 6 X 10	
23	90060500006	6	WASHER, SPRING 6	
24	69001011050	2	BLADE	
25	60561011050	2	HUB, BLADE	
27	60541611050	2	OIL SEAL	
28	90070200030	2	CIRCLIP 30	
29	90085506903	2	BEARING, BALL 6903	
30	60530511050	1	GEAR	
31	60531511050	1	WHEEL, WORM	
32	90032504015	1	KEY	
33	60531411050	1	SHAFT, WORM WHEEL	
34A	60531011050	1	GEAR	
34B	60531011150	1	GEAR	
34C	N/A	1	GEAR	
34D	60531011250	1	GEAR	
34E	60531011950	1	GEAR	
34F	60531012050	1	GEAR	
35A	90080000609	1	BEARING, BALL 609	
35B,C,D	900800006001	1	BEARING, BALL 6001	
35E,F	90085506900	1	BEARING, BALL 6900	
36A	90080300609	1	BEARING, BALL 609	
36B,C,D	900803006001	1	BEARING, BALL 6001	
36E,F	90085506900	1	BEARING, BALL 6900	
37A,E,F	90070200022	1	CIRCLIP 22	
37B,C,D	90070200028	1	CIRCLIP 28	
38A	90070600009	1	CIRCLIP 9	
38B,C,D	90070100012	1	CIRCLIP 12	
38E,F	90070600010	1	CIRCLIP 10	
39D	90070700007	1	CIRCLIP 7	