



Installation Instructions

DGK45F\FU Shore Power Plug



100000132

Kit Contents:

- (1) NOCO Shore Power Plug
- (3) Each - 8-32 x 3/4" stainless steel screw, 8-32 stainless steel flat washers and 8-32 stainless steel lock nuts.
- Cable ties



100000129

Tools & Materials Required:

- Masking tape
- Electrical tape
- Scissors or Safety knife
- Center point
- Deburring tool
- 1/8" drill bit
- 13/64" drill bit
- 13 mm combination ratchet wrench
- 2" holesaw or optional 1-1/2" EMT knock-out punch
- Drill (electric or cordless)
- #2 Phillips screwdriver
- 11/32" combination open\box wrench
- Cordless Driver with #2 Phillips (optional)

- (1) DGK45F\FU Shore Power Plug Installation Template

INSTALLATION INSTRUCTIONS

- Step 1: Verify Kit Contents
- Step 2: Read through installation instructions before attempting.
- Step 3: Release the Left Enclosure Rear Door latch. (Figure 1)

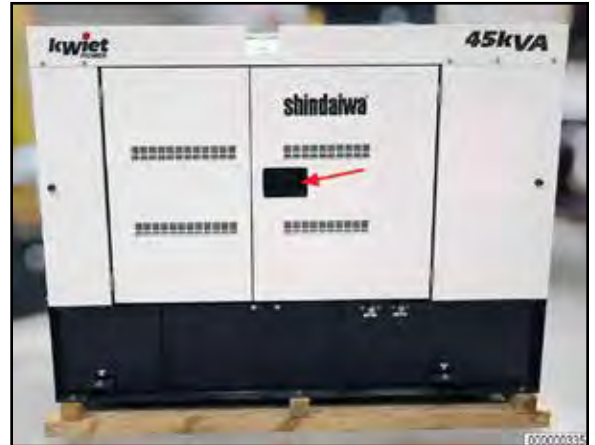


Figure 1

- Step 4: Remove nut and washer securing NEGATIVE battery cable to NEGATIVE terminal using a 13 mm wrench. (Figure 2)



Figure 2

- Step 5: Position the negative battery cable out of the way, then reinstall washer and nut to battery terminal. (Figure 3)



Figure 3

- **Step 6:** Using a 13mm socket and driver, remove eight (8) bolts securing the Front Enclosure Frame Lower Panel to the Front Enclosure Frame. (Figure 4)
- **Step 7:** Remove the Front Enclosure Frame Lower Panel and store in a safe secure manner. Retain the bolts for reinstallation.

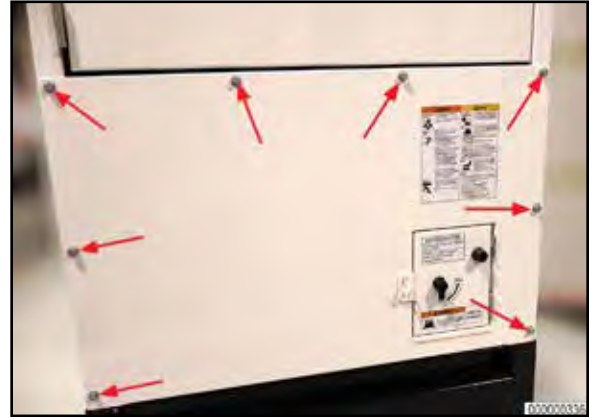


Figure 4

- **Step 8:** Prepare the Shore Power Plug Template (included with kit) for use by using scissors or safety knife; cut along dashed lines as indicated.
- **Step 7:** Align template on lower left corner of Enclosure-Frame, as shown. Secure in place with masking tape. (Figure 5)

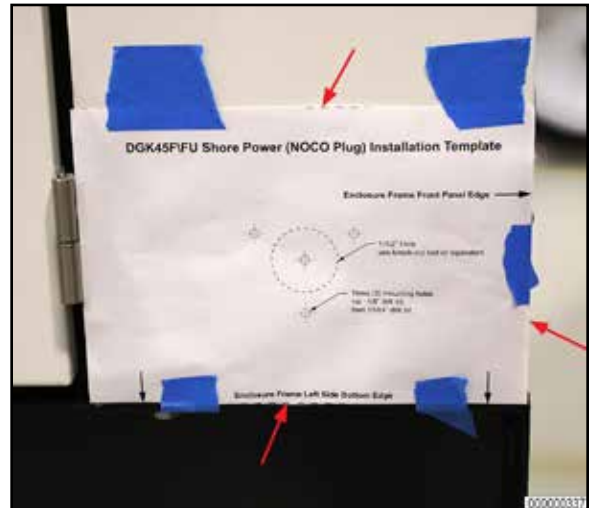


Figure 5

- **Step 8:** Using a center punch, and template (hole locations indicated), mark drill holes through the template into the surface of the Enclosure Frame.
- **Step 9:** Using 1/8" drill bit and drill, create pilot holes in all the locations.
- **Step 10:** Using a 13/64" bit, enlarge all the mounting holes.

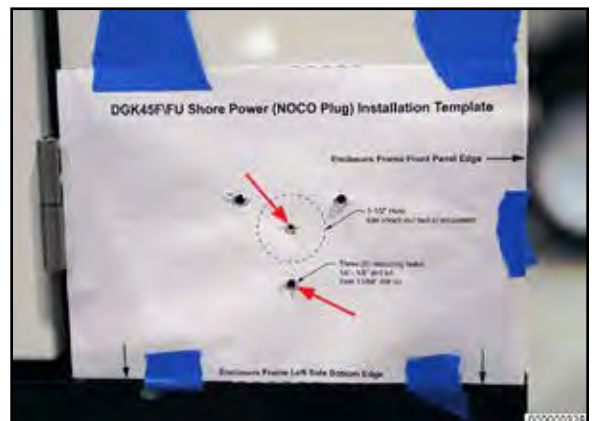


Figure 6

- **Step 11:** Using a 2" hole saw and drill or optional a 1-1/2" EMT knock-out tool, create the Shore Power plug hole. (Figure 7) Remove and discard paper template once operation is complete.
- **Step 12:** Deburr the center plug hole and the mounting holes.

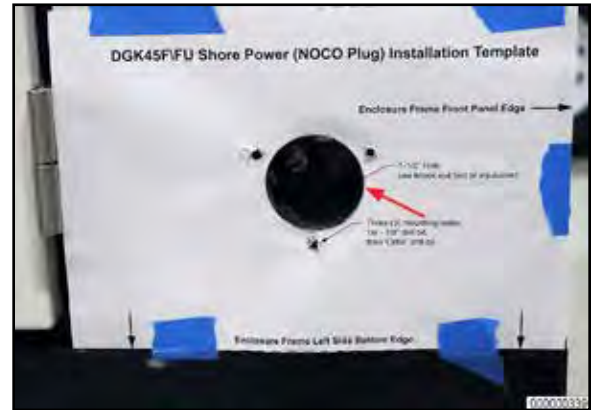


Figure 7

- **Step 13:** Using scissors or utility knife, remove a 1 inch square portion of foam from the backside of the Enclosure Frame in each of the three (3) Shore Power mounting holes as shown (Figure 8)

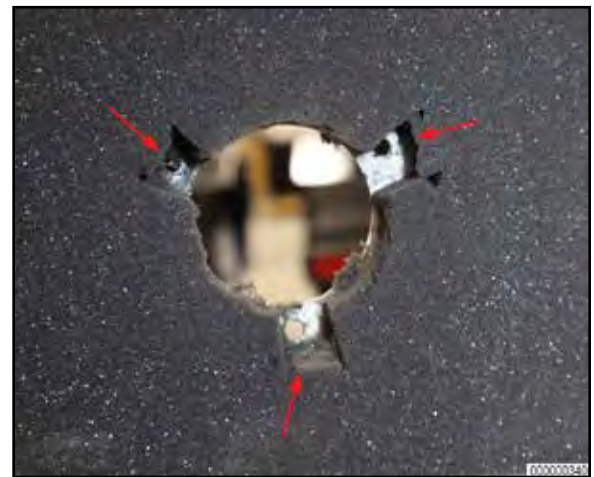


Figure 8

- **Step 14:** Remove the Shore Power Plug (NOCO) from it's packaging.
- **Step 15:** Route the two (2) whips (power receptacles) from the Shore Power Plug, through the new mounting hole.
- **Step 16:** Orientate the plug that mounts to the Enclosure Frame as shown (the grounding prong should be directly lined up with the lower mounting screw hole). Attach the Shore Power Plug to the Enclosure Frame with three (3) screws, washers and locknuts provided in the kit. Secure using using a #2 Phillips screwdriver and 11/32" wrench. (Figure 9)



Figure 9

- **Step 17:** Using electrical tape, cover the electrical receptacles of the whip to prevent foreign matter or moisture entry prior to usage. (Figure 10)



Figure 10

- **Step 18:** Reinstall the Front Enclosure Frame Lower Panel, securing in place using a 13 mm socket and driver, and the eight (8) previously removed bolts. (Figure 11)

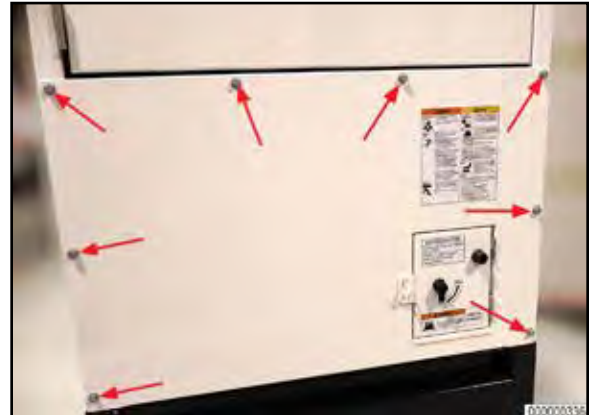


Figure 11

- **Step 19:** Remove bolt and lockwasher from NEGATIVE battery terminal, reposition and reattach NEGATIVE battery cable to NEGATIVE battery terminal, using a 13mm wrench or equivalent, secure the battery cable using the previously removed lockwasher and bolt. **DO NOT OVERTIGHTEN bolt - Snug only.** (Figure 12)



Figure 11

- **Step 20:** Close Right Enclosure Doors making sure the latch is fully engaged.

Installation of the Shore Power Plug is now complete