



# Installation Instructions

## DGK15F\FU Fire Extinguisher



### KIT CONTENTS:

- (1) 2.5 Lb. Co<sup>2</sup> Fire Extinguisher w/Mount
- (2) Each - 1/4-20x3/4 stainless steel bolts, 1/4-20 stainless steel flat washers and 1/4-20 stainless steel lock nuts.



### TOOLS & MATERIALS REQUIRED:

- Masking tape
- Scissors
- Safety knife
- Center point
- Deburring tool
- 1/8" drill bit
- 5/16" drill bit
- Drill (electric or cordless)
- 10 mm socket - 3/8 drive
- 7/16 socket - 3/8 drive
- 3/8 ratchet or driver with 3" extension
- 7/16 combination wrench

- (1) DGK15F\FU Fire Extinguisher Installation Template

## INSTALLATION INSTRUCTIONS

- **Step 1: Verify Kit Contents**
- **Step 2: Move generator AUTO\STOP\START\ selector switch to the STOP position if not already in STOP position.**
- **Step 3: Using a 10 mm socket with ratchet or driver, proceed to remove all eight (8) bolts from the rear panel, then set rear panel on a sturdy flat work surface as shown. (Figure 1)**



Figure 1

- **Step 4: Remove fire extinguisher from packaging. Release latch securing extinguisher mount to extinguisher. Remove mount.**
- **Step 5: Prepare installation template for use; using scissors or safety knife, cut out the template following the dashed lines.**
- **Step 6: Place template on upper right of rear panel, aligning top and right edges as shown. Secure template to rear panel using masking tape. (Figure 2)**
- **Step 7: Use center punch to mark centers of holes indicated on template**
- **Step 8: Using a 1/8" drill bit and drill, create pilot holes at previously marked center points on template.**
- **Step 9: Using a 5/16" drill bit, open pilot holes to final 5/16" size. Now remove and discard template**



Figure 2

- **Step 10: Flip rear panel over. Using scissors or safety knife, remove approximately 1 inch square of foam insulation from around each mounting hole as shown. (Figure 3)**
- **Step 11: Using deburring tool, remove all sharp edges on backside and front of mounting holes.**

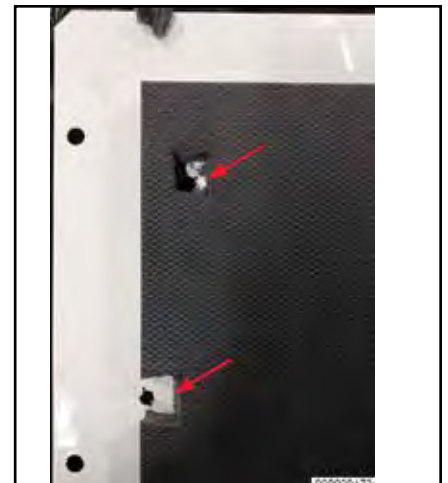


Figure 3

- **Step 12:** With foam side of rear panel facing down, position fire extinguisher mount over mounting holes and attach to rear panel using two (2) 1/4-20 stainless steel bolts on the mount, and two (2) 1/4-20 stainless steel flat washers & locknuts on the backside. **DO NOT** overtighten - snug bolts & nuts only.
- **Step 13:** Reinstall rear panel using eight (8) previously removed bolts with 10 mm socket and ratchet or driver. Snug bolts only (Figure 4)



Figure 4

- **Step 14:** Place fire extinguisher into mount\holder and secure with clasp. (Figure 5)

**The Fire Extinguisher Installation is now complete**



Figure 5