



# Installation Instructions

## DGK15FL Shore Power Plug

### Kit Contents:

- (1) Battery Tender Charger\Maintainer



- (4) Each - 8-32x3/4" stainless steel screw, 8-32 stainless steel flat washers and 8-32 stainless steel lock nuts.
- (1) M8x1.25x20mm stainless steel bolt
- Black Cable Ties



- (1) DGK15FL Battery Tender Installation Template

### Tools & Materials Required:

- Masking tape
- Electrical tape
- Scissors or Safety knife
- Center point
- Deburring tool
- 1/8" drill bit
- 13/64" drill bit
- 10 mm combination ratchet wrench
- 13 mm combination ratchet wrench
- Drill (electric or cordless)
- #2 Phillips screwdriver
- 11/32" combination open\box wrench
- 11/32" deepwell 1/4" drive socket and ratchet
- Cordless Driver with #2 Phillips (optional)

## INSTALLATION INSTRUCTIONS

- Step 1: Verify Kit Contents
- Step 2: Read through installation instructions before beginning the procedure.
- Step 3: Release the Right Enclosure Rear Door latch. (Figure 1) and open both doors.



Figure 1

- Step 4: Using a 13mm ratchet wrench, remove bolt and washer securing cables to the negative side of the battery. (Figure 2)



Figure 2

- Step 5: Position cables out of the way, then reinstall bolt and washer to battery terminal. (Figure 3)



Figure 3

- Step 6: Release the Left Enclosure Rear Door latch. (Figure 4)
- Step 7: Position a short table or cart in front of the Left Enclosure Control Panel.



Figure 4

- Step 8: Using a 10 mm socket and driver, remove two (2) bolts securing the left side of the Left Enclosure Control Box Panel to the Left Side Enclosure Frame Mounting Bracket. (Figure 5)
- Step 9: Using a 13 mm socket and driver, remove two (2) bolts securing the Right Side of the Left Enclosure Control Panel to the Enclosure Frame. (Figure 52) Then carefully rotate and lay the Left Enclosure Control Box Panel down onto the short table.



Figure 5

- Step 10: Using a 13 mm socket and impact driver, remove all fifteen (15) bolts securing the Top Enclosure in place. (Figure 6)



Figure 6

- **Step 11:** Using a 17 mm socket and driver, remove four (4) bolts located on the top of the enclosure near each of the tie-down locations. (Figure 7)



Figure 7

- **Step 12:** Cut cable tie securing Air Intake Hose to underside of Top Enclosure. (Figure 8)

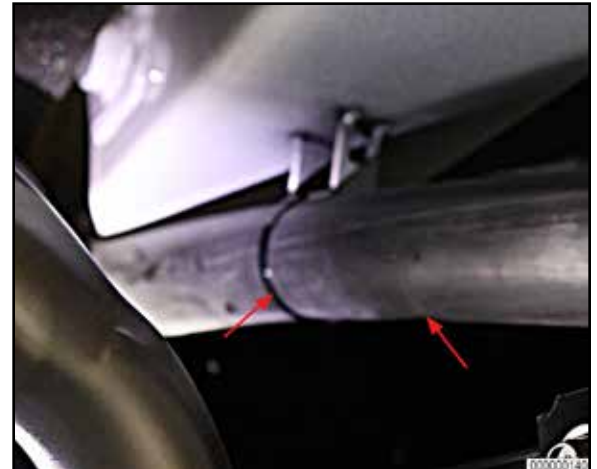


Figure 8

- **Step 13:** Using a 13mm ratchet wrench, remove two (2) bolts securing Air Cleaner Housing to the underside of the Top Enclosure. (Figure 9)



Figure 9

**NOTE:** The step 14 requires two people to safely perform.

- **Step 14:** Remove Top Enclosure and place on a sturdy flat work surface.
- **Step 15:** Prepare the Battery Tender Installation Template (included with kit) for use using scissors or safety knife; cut along dashed lines as indicated.
- **Step 16:** Attach Battery Tender Installation Template to upper rear corner of Control Box Support Panel using masking tape as shown. (Figure 10)
- **Step 17:** Using a center punch, and template (hole locations indicated), mark drill holes through the template into the surface of the Control Box Support Panel. (Figure 7)
- **Step 18:** Using 1/8" drill bit and drill, create pilot holes in both mounting hole locations. Finish up by using a 13/64" drill bit and drill. Then remove template and discard.
- **Step 19:** Position Battery Tender on upper rear corner of Control Box Support Panel and secure in place using two (2) 8-32 stainless steelscrews through the battery tender and with two (2) 8-32 stainless steel flat washers and two (2) stainless steel locknuts on the backside using a #2 Phillips screwdriver and 9mm deep well socket or box wrench as shown. (Figure 11)

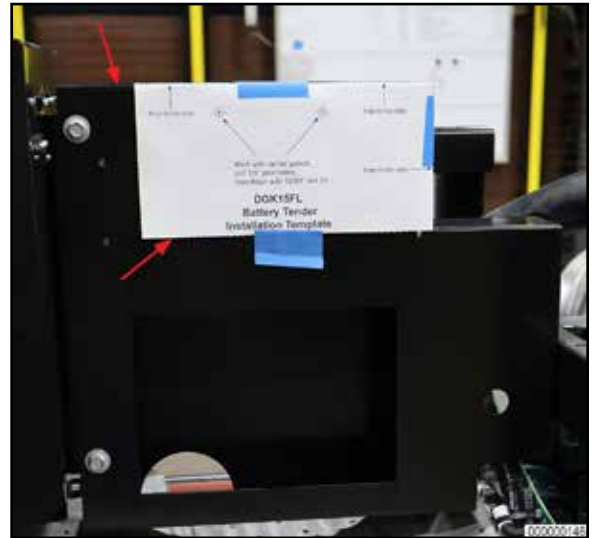


Figure 10



Figure 11



- **Step 20:** Remove power cord twist-tie and route cord diagonally over to existing wire harness. Attach power cord to existing wire harness with a cable tie as shown. (Figure 12)



Figure 12

- **Step 21:** Continue routing battery tender power cord along existing wire harness, securing in place with cable tie(s). (Figure 13)



Figure 13

- **Step 22:** Plug Battery Tender power cord into one of the available Shore Power whip receptacles. Using electrical tape, tape up the joined plugs to prevent them from possibly becoming disconnected. (Figure 14)



Figure 14

- **Step 23: Secure Battery Tender Cord and Shore Power cord to cable harness as shown using cable ties. Remove excess cable tie material (tails). (Figure 15)**



Figure 15

- **Step 24: Connect plug ends (from Battery Tender to the Battery Cable Ends). To prevent plugs from separating, secure with electrical tape. (Figure 16)**



Figure 16

- **Step 25: Remove bolt securing cables to POSITIVE side of battery using a 13 mm ratchet wrench. Discard bolt**
- **Step 26: Combine RED wire lead from Battery Tender connector with cable and reinstall to POSITIVE side of battery with new M8x1" bolt in kit and 13 mm ratchet wrench. DO NOT OVERTIGHTEN - Snug bolt (Figure 17)**



Figure 17

- **Step 27: Secure positive wire lead with fuse holder to existing cables with cable tie. (Figure 18)**



Figure 18

- **Step 27: Remove the bolt and washer from the Negative battery terminal, then combine new negative wire lead from Battery Tender with Negative battery cable. Attache the cables with the bolt and washer to the Negative Battery Terminal. Using a 13mm ratchet wrench, secure the battery cable to battery. (Figure 19) DO NOT OVERTIGHTEN - Snug bolt**



Figure 19

- **Step 29: Reinstall TOP ENCLOSURE, securing with fifteen (15) bolts previously removed in Step 10, using a 13mm socket and driver.**
- **Step 30: Complete the Top Enclosure installation by reinstalling four (4) top bolts (previously removed in step 11), and securing in place using a 17 mm ratchet wrench.**
- **Step 31: Reattach the Air Intake Hose to underside of Top Enclosure (previously removed in step 12) using a new cable tie.**
- **Step 32: Reattach the Air Cleaner Housing to the underside of the Top Enclosure using a 13mm ratchet wrench and two (2) bolts (previously removed in step 13).**
- **Step 33: Reinstall the Left Enclosure Control Box Panel and secure in place using previous removed bolts with the 10 mm socket and driver as well as those using the 13mm socket and driver from step 8 and step 9.**
- **Step 34: Close and latch the Left Enclosure Rear Door.**
- **Step 35: Close the Right Enclosure Rear Doors.**

**The Battery Tender installation is now complete**