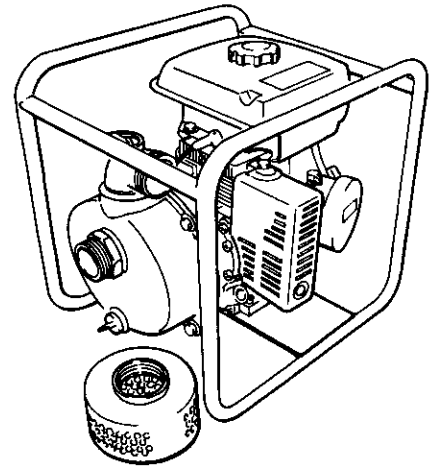




WATER PUMP PARTS MANUAL MODEL WP-2000

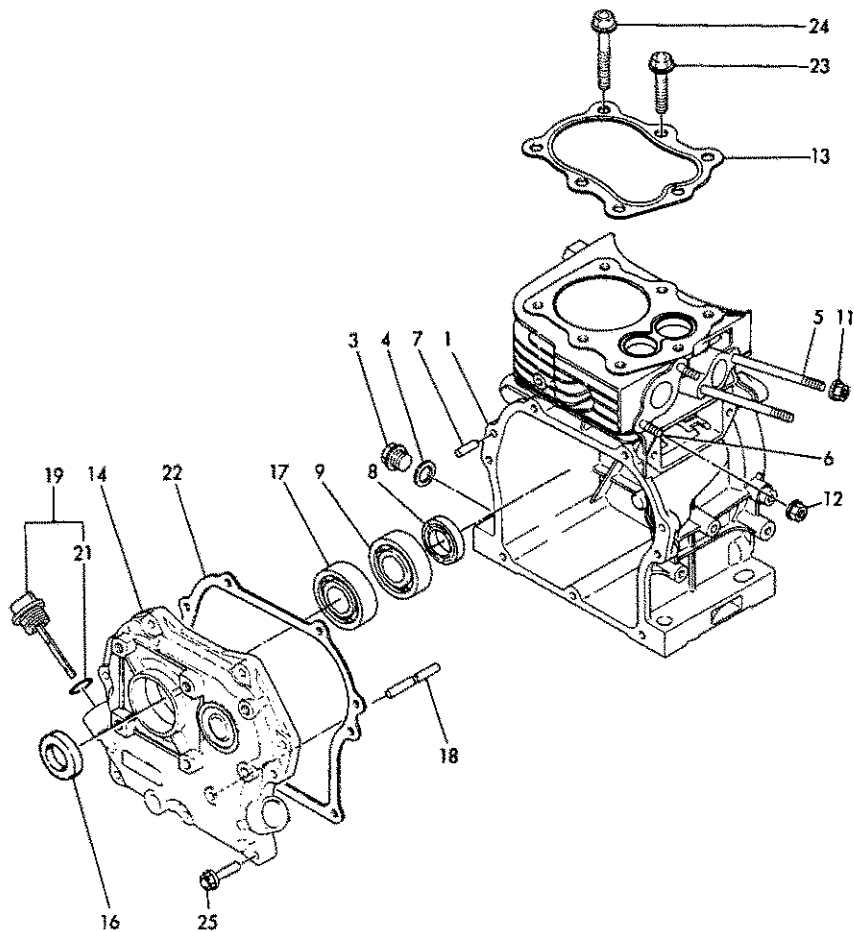


CONTENTS

1B01

GROUP NO.	GROUP NAME	LOCATION NO.
1	CYLINDER BODY	1B02
2	BREATHER	1B03
3	LABEL	1B04
4	CYLINDER HEAD	1B05
5	AIR CLEANER & MUFFLER	1B06
6	CAMSHAFT	1B07
7	CRANKSHAFT & MAIN BEARING	1B08
8	PISTON & CONNECTING ROD	1B09
9	COOLING FAN CASE	1B10
10	FUEL TANK	1B11
11	CARBURETOR	1B12
12	FUEL LINE	1B13
13	GOVERNOR	1B14
14	CONTROL DEVICE	1B15
15	STARTING DEVICE	1B16
16	STOP SWITCH & FLYWHEEL MAGNETO	1C01
17	OIL SENSOR	1C02
18	TOOL	1C03
19	PUMP	1C04
20	GASKET SET (OPTIONAL)	1C05

1 CYLINDER BLOCK



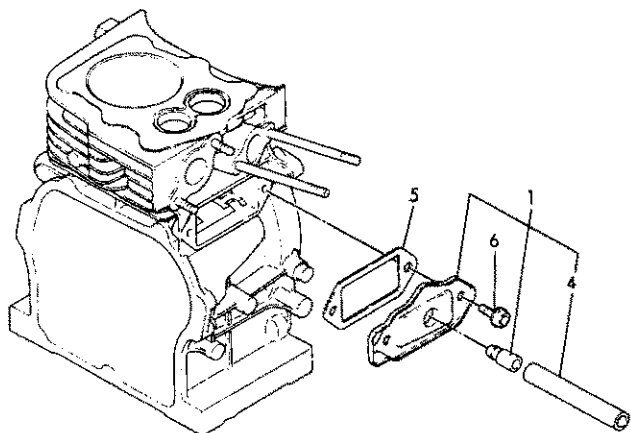
**1B02
(1B01)**

(1) CYLINDER BODY

(A) = WP-2000 (D) =
(B) = (E) =
(C) = (F) =

REF. NO.	LEV.	O	PART NO.	DESCRIPTION	Q'TY					
					(A)	(B)	(C)	(D)	(E)	(F)
1	.	Y	760671-01560	BODY ASSY, CYLINDER	1					
3	..	Y	160610-01690	PLUG, DRAIN	1					
4	..	Y	104200-59170	GASKET 12	1					
5	..	Y	160610-04570	BOLT M6 X 70	2					
6	..	Y	160610-04620	BOLT M6 X 16	2					
7	..	Y	223120-60160	PARALLEL PIN 6 X 16	2					
8	..	Y	160610-02220	OIL SEAL TC20326	1					
9	..	Y	241010-62040	BEARING 6204 C3	1					
11	..	Y	263660-60002	NUT M6	2					
12	..	Y	263660-60002	NUT M6	2					
13	.	Y	160611-01330	GASKET, CYL. HEAD	1					
14	.	Y	760641-01510	COVER ASSY, SIDE	1					
16	..	Y	160640-02220	OIL SEAL TC204127	1					
17	..	Y	241010-62024	BEARING 6204 C3	1					
18	..	Y	160610-61100	GOVERNOR SHAFT	1					
19	.	Y	160611-01740	CAP ASSY	1					
21	..	Y	243110-00150	O-RING 1A P-15.0	1					
22	.	Y	160610-01410	GASKET, COVER	1					
23	.	Y	160610-04172	BOLT M8 X 38	4					
24	.	Y	160610-04192	BOLT M8 X 60	3					
25	.	Y	264760-60252	BOLT M6 X 25	7					

2 BREATHER



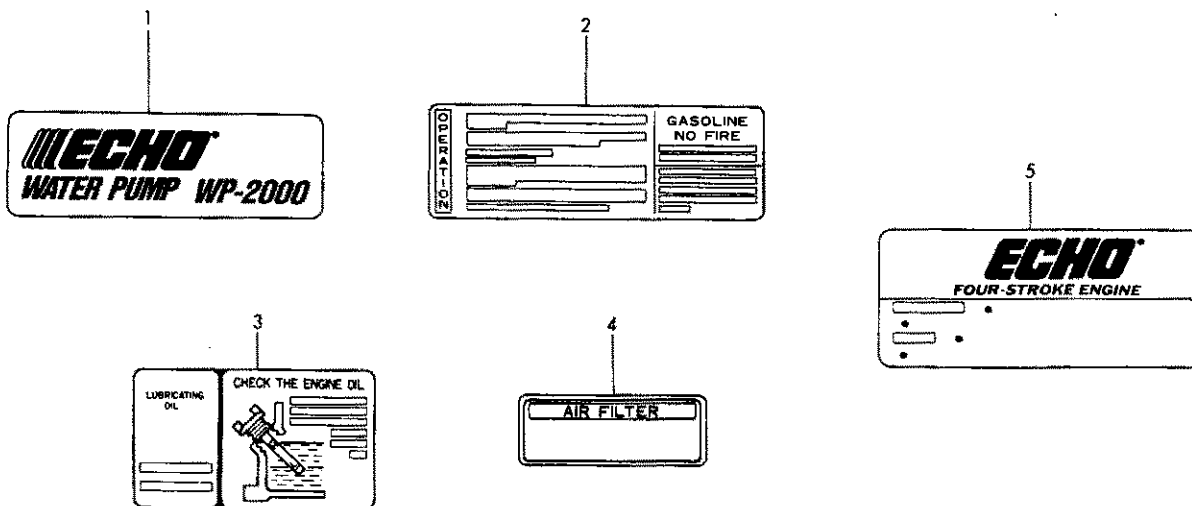
**1B03
(1B01)**

(2) BREATHER

(A) = WP-2000 (D) =
(B) = (E) =
(C) = (F) =

REF. NO.	LEV.	O	PART NO.	DESCRIPTION	Q'TY					
					(A)	(B)	(C)	(D)	(E)	(F)
1	.	Y	160610-03010	BREATHER ASSY	1					
4	..	Y	160610-03180	PIPE, BREATHER	1					
5	.	Y	160610-03070	GASKET	1					
6	.	Y	264760-60142	BOLT M6 X 14	2					

3 LABEL



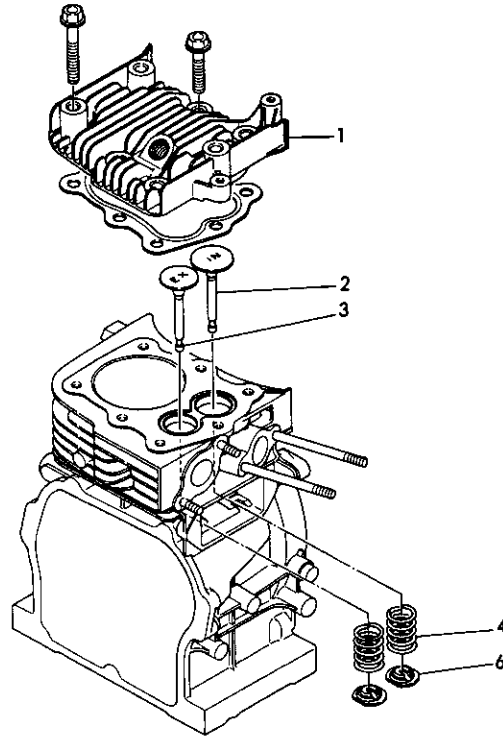
**1B04
(1B01)**

(3) LABEL

(A) = WP-2000 (D) =
(B) = (E) =
(C) = (F) =

REF. NO.	LEV.	O	PART NO.	DESCRIPTION	Q'TY					
					(A)	(B)	(C)	(D)	(E)	(F)
1	.	Y	160641-07150	LABEL (WP2000)	1					
2	.	Y	160611-07250	LABEL, OPERATION	1					
3	.	Y	160611-07260	LABEL, OIL	1					
4	.	Y	183210-07370	LABEL, AIR CLEANER	1					
5	.	Y	160671-07371	LABEL (ECHO)	1					

4 CYLINDER HEAD



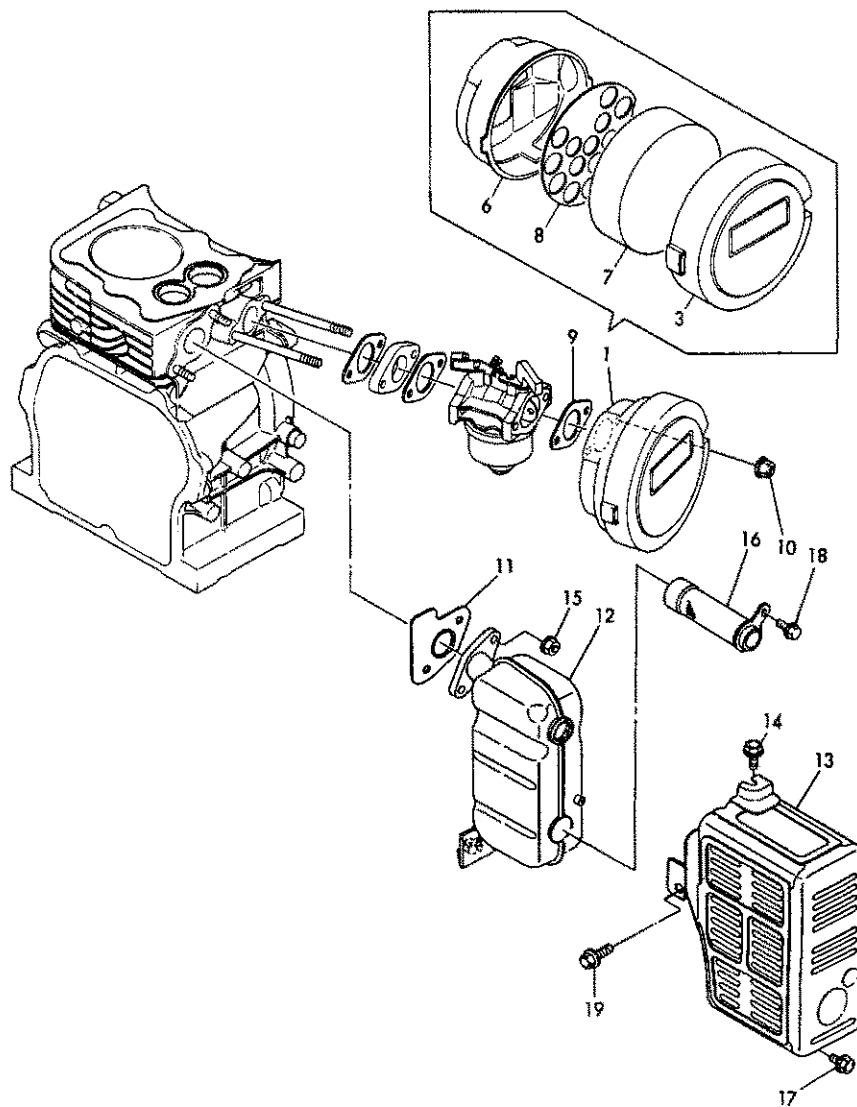
**1B05
(1B01)**

(4) CYLINDER HEAD

(A) = WP-2000 (D) =
 (B) = (E) =
 (C) = (F) =

REF. NO.	LEV.	O	PART NO.	DESCRIPTION	Q'TY					
					(A)	(B)	(C)	(D)	(E)	(F)
1	.	Y	160611-11010	HEAD, CYLINDER	1					
2	.	Y	160610-11100	VALVE, SUCTION	1					
3	.	Y	160610-11110	VALVE, EXHAUST	1					
4	.	Y	160610-11120	SPRING, VALVE	2					
6	.	Y	160610-11180	RETAINER, SPRING	2					

5 AIR CLEANER & MUFFLER



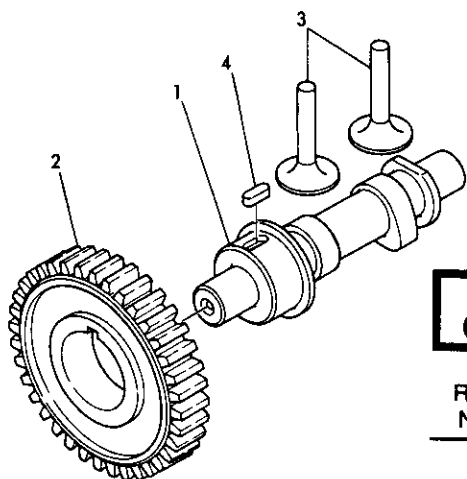
**1B06
(1B01)**

(5) AIR CLEANER & MUFFLER

(A) = WP-2000 (D) =
 (B) = (E) =
 (C) = (F) =

REF. NO.	LEV.	O	PART NO.	DESCRIPTION	Q'TY					
					(A)	(B)	(C)	(D)	(E)	(F)
1	.	Y	760610-12571	CLEANER ASSY, AIR	1					
3	..	Y	760610-12540	CAP ASSY, AIR CLEANER	1					
6	..	Y	160610-12520	BODY, AIR CLEANER	1					
7	..	Y	160610-12540	ELEMENT, AIR CLEANER	1					
8	..	Y	160610-12550	HOLDER, ELEMENT	1					
9	.	Y	160610-56150	GASKET, CARBURETOR	1					
10	.	Y	263660-60002	NUT M6	2					
11	.	Y	160610-13201	GASKET, MUFFLER	1					
12	.	Y	160671-13551	MUFFLER	1					
13	.	Y	160641-13830	COVER, MUFFLER	1					
14	.	Y	264760-60142	BOLT M6 X 14	1					
15	.	Y	263660-60002	NUT M6	2					
16	.	Y	160671-13650	ARRESTER, SPARK	1					
17	.	Y	261060-60082	BOLT M6 X 8	1					
18	.	Y	261060-60102	BOLT M6 X 10	1					
19	.	Y	261060-80142	BOLT M8 X 14	1					

6 CAMSHAFT



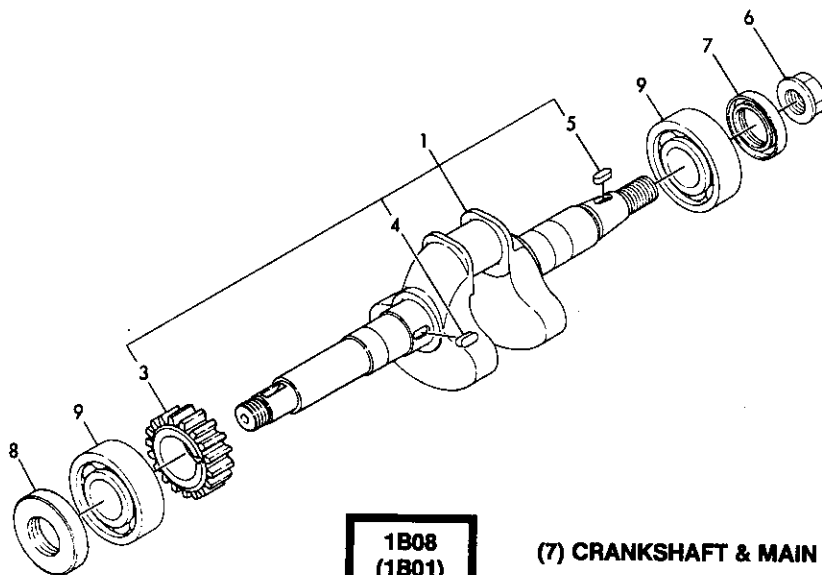
**1B07
(1B01)**

(6) CAMSHAFT

(A) = WP-2000 (D) =
(B) = (E) =
(C) = (F) =

REF. NO.	LEV.	O	PART NO.	DESCRIPTION	QTY					
					(A)	(B)	(C)	(D)	(E)	(F)
1	.		Y 160640-14011	CAMSHAFT	1					
2	.		Y 160641-14100	GEAR, CAMSHAFT	1					
3	.		Y 160610-14200	TAPPET	2					
4	.		Y 160610-21290	KEY 4 X 10	1					

7 CRANKSHAFT & MAIN BEARING



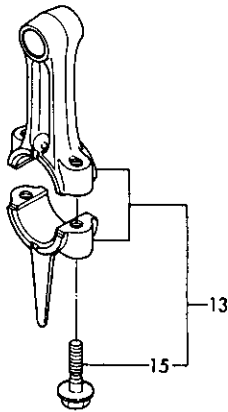
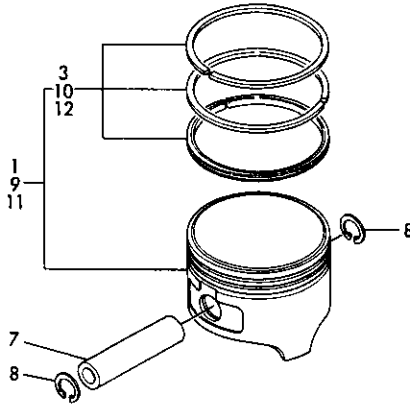
**1B08
(1B01)**

(7) CRANKSHAFT & MAIN BEARING

(A) = WP-2000 (D) =
(B) = (E) =
(C) = (F) =

REF. NO.	LEV.	O	PART NO.	DESCRIPTION	QTY					
					(A)	(B)	(C)	(D)	(E)	(F)
1	.		Y 760640-21710	CRANKSHAFT ASSY	1					
3	..		Y 160641-21200	GEAR, CRANKSHAFT	1					
4	..		Y 160610-21290	KEY 4 X 10	1					
5	..		Y 160610-21290	KEY 4 X 10	1					
6	.		Y 263761-20002	NUT M12	1					
7	.		Y 160610-02220	SEAL, OIL	1					
8	.		Y 160640-02220	SEAL, OIL	1					
9	.		Y 241010-62040	BALL BEARING	2					

8 PISTON & CONNECTING ROD



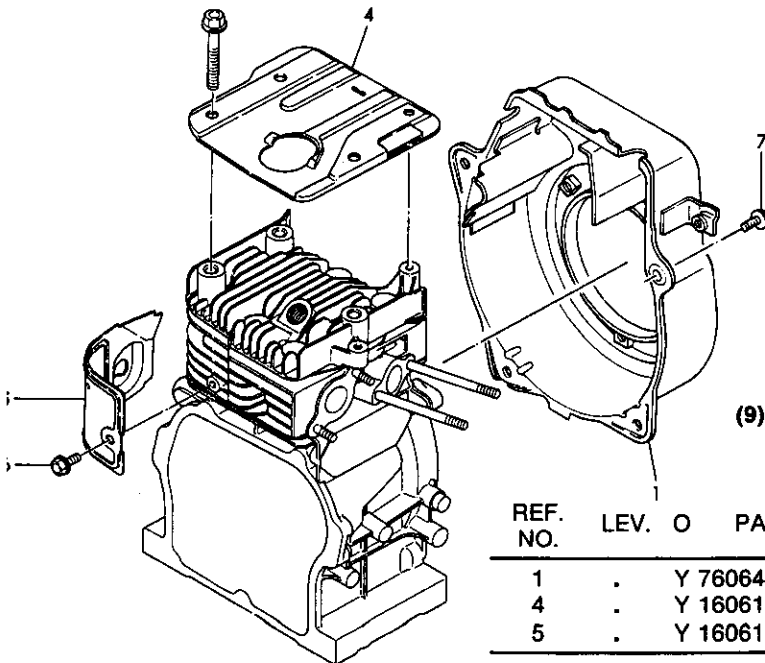
**1B09
(1B01)**

(8) PISTON & CONNECTING ROD

(A) = WP-2000 (D) =
(B) = (E) =
(C) = (F) =

REF. NO.	LEV.	O	PART NO.	DESCRIPTION	Q'TY					
					(A)	(B)	(C)	(D)	(E)	(F)
1	.	Y	160611-22010	PISTON W/RINGS	1					
3	..	Y	760611-22500	RING SET, PISTON	1					
7	.	Y	160611-22300	PIN, PISTON	1					
8	.	Y	222520-00130	CIRCLIP 13	2					
9	.	Y	160611-22470	PISTON ASSY O.S=0.25	1					
10	..	Y	760611-22540	RING SET O.S=0.25	1					
11	.	Y	160611-22480	PISTON ASSY O.S=0.5	1					
12	..	Y	760611-22550	RING SET, O.S=0.5	1					
13	.	Y	760610-23101	ROD ASSY, CONNECTING	1					
15	..	Y	160610-23201	BOLT, ROD	2					

9 COOLING FAN CASE



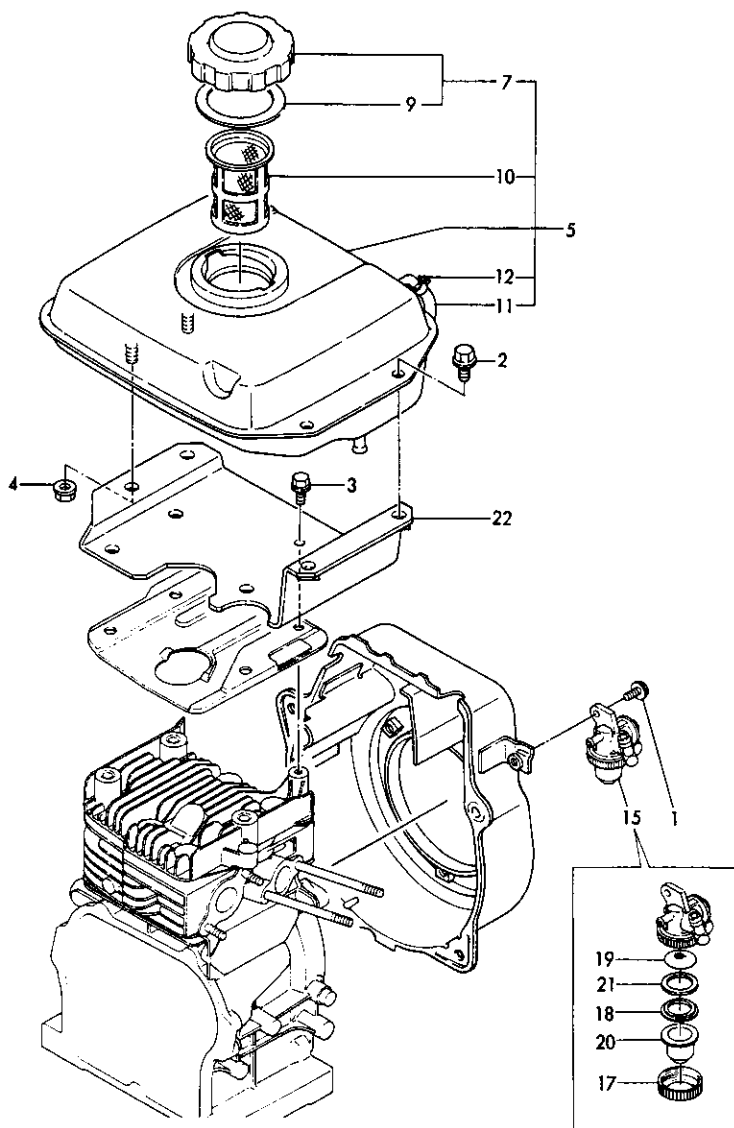
**1B10
(1B01)**

(9) COOLING FAN CASE

(A) = WP-2000 (D) =
(B) = (E) =
(C) = (F) =

REF. NO.	LEV.	O	PART NO.	DESCRIPTION	Q'TY					
					(A)	(B)	(C)	(D)	(E)	(F)
1	.	Y	760641-45601	CASE ASSY, FAN	1					
4	.	Y	160611-45200	COVER, HEAD	1					
5	.	Y	160611-45211	COVER	1					
6	.	Y	264760-60142	BOLT M6 X 14	1					
7	.	Y	264760-60142	BOLT M6 X 14	4					

10 FUEL TANK



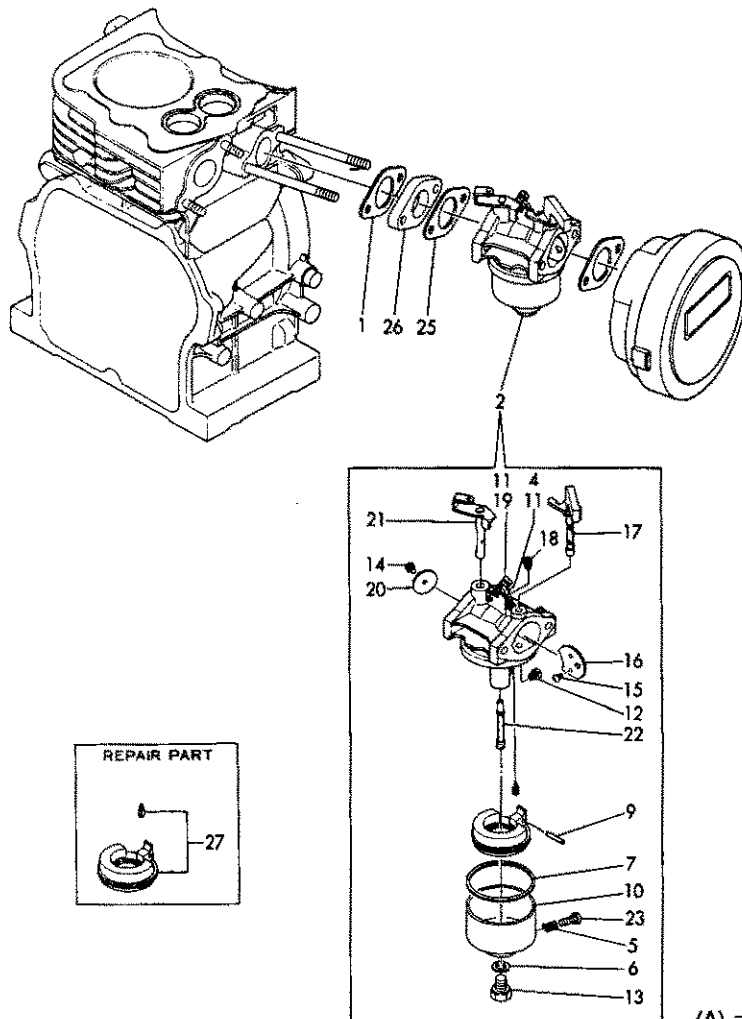
**1B11
(1B01)**

(10) FUEL TANK

(A) = WP-2000 (D) =
(B) = (E) =
(C) = (F) =

REF. NO.	LEV.	O	PART NO.	DESCRIPTION	Q'TY					
					(A)	(B)	(C)	(D)	(E)	(F)
1	.	Y	261060-60122	BOLT M6 X 12 PLATED	1					
2	.	Y	261060-80142	BOLT M8 X 14 PLATED	2					
3	.	Y	264760-60142	BOLT M6 X 14	1					
4	.	Y	263660-80002	NUT M8	2					
5	.	Y	760641-55700	TANK ASSY, FUEL	1					
7	..	Y	160710-55060	CAP, FUEL TANK	1					
9	...	Y	160393-55050	GASKET	1					
10	..	Y	160710-55100	STRAINER	1					
11	..	Y	160260-55150	GAUGE, LEVEL	1					
12	..	Y	124722-59050	CLAMP	2					
15	.	Y	160710-55301	CLOCK ASSY, FUEL	1					
17	..	Y	160710-55360	RETAINER	1					
18	..	Y	160710-55370	GASKET	1					
19	..	Y	160710-55381	STRAINER, FUEL	1					
20	..	Y	160710-55390	BOWL, STRAINER	1					
21	..	Y	160692-55421	PLATE	1					
22	.	Y	160641-55760	BRACKET, FUEL TANK	1					

11 CARBURETOR



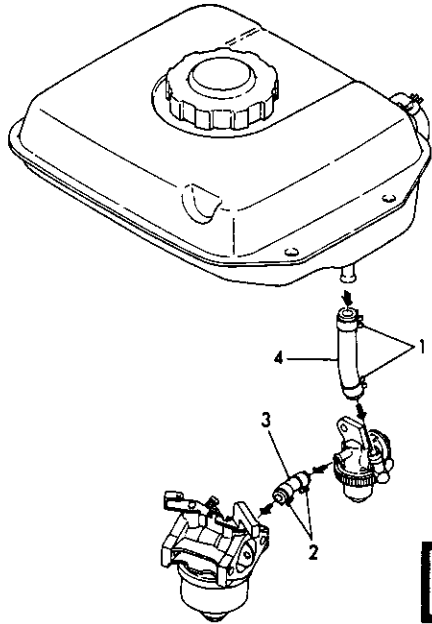
(A) = WP-2000 (D) =
 (B) = (E) =
 (C) = (F) =

**1B12
 (1B01)**

(11) CARBURETOR

REF. NO.	LEV.	O	PART NO.	DESCRIPTION	Q'TY					
					(A)	(B)	(C)	(D)	(E)	(F)
1	.	Y	160310-13200	GASKET, SILENCER	1					
2	.	Y	160641-56010	CARBURETOR	1					
4	..	Y	181230-56370	SCREW	1					
5	..	Y	181230-56380	SPRING	1					
6	..	Y	160610-56550	GASKET	1					
7	..	Y	160610-56610	GASKET	1					
9	..	Y	160610-56631	PIN	1					
10	..	Y	160610-56640	BODY, CHAMBER	1					
11	..	Y	181230-56380	SPRING	2					
12	..	Y	160710-56650	JET, MAIN	1					
13	..	Y	160610-56660	BOLT	1					
14	..	Y	160120-56670	SCREW	1					
15	..	Y	160610-56670	SCREW	2					
16	..	Y	160610-56680	VALVE	1					
17	..	Y	160610-56690	SHAFT, CHOKE	1					
18	..	Y	160710-56740	JET, PILOT	1					
19	..	Y	160210-56750	SCREW	1					
20	..	Y	160610-56760	VALVE, THROTTLE	1					
21	..	Y	160710-56770	SHAFT ASSY, THROTTLE	1					
22	..	Y	160611-56800	NOZZLE, MAIN	1					
23	..	Y	160610-56900	SCREW	1					
25	.	Y	160610-56150	GASKET, CARBURETOR	1					
26	.	Y	160610-56160	SPACER, CARBURETOR	1					
27	.	Y	160610-56280	NEEDLE ASSY (SUS)	1					

12 FUEL LINE



1B13
(1B01)

(12) FUEL LINE

(A) = WP-2000 (D) =
(B) = (E) =
(C) = (F) =

REF. NO.	LEV.	O	PART NO.	DESCRIPTION	Q'TY						
					(A)	(B)	(C)	(D)	(E)	(F)	
1	.		Y 106990-44660	CLAMP	2						
2	.		Y 124722-59050	CLAMP	2						
3	.		Y 160610-59160	PIPE, FUEL	1						
4	.		Y 160611-59150	PIPE, FUEL	1						

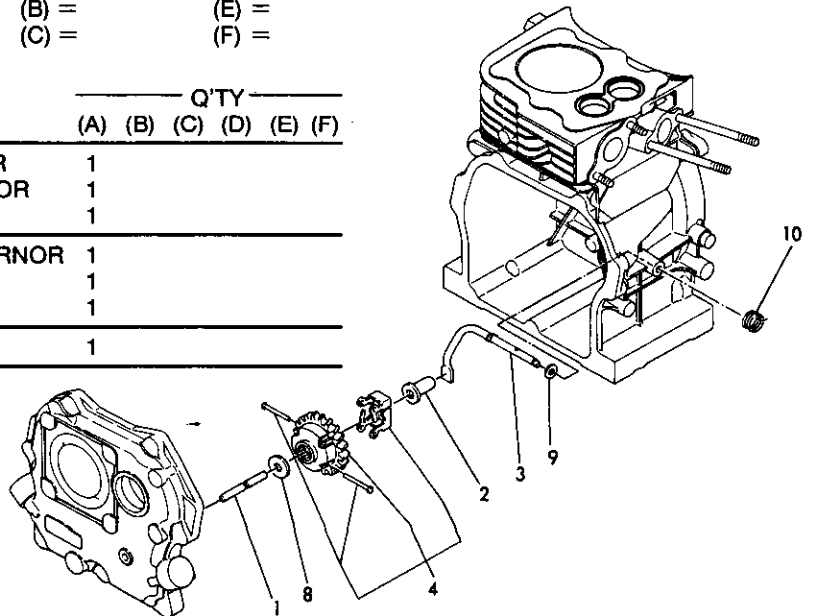
13 GOVERNOR

1B14
(1B01)

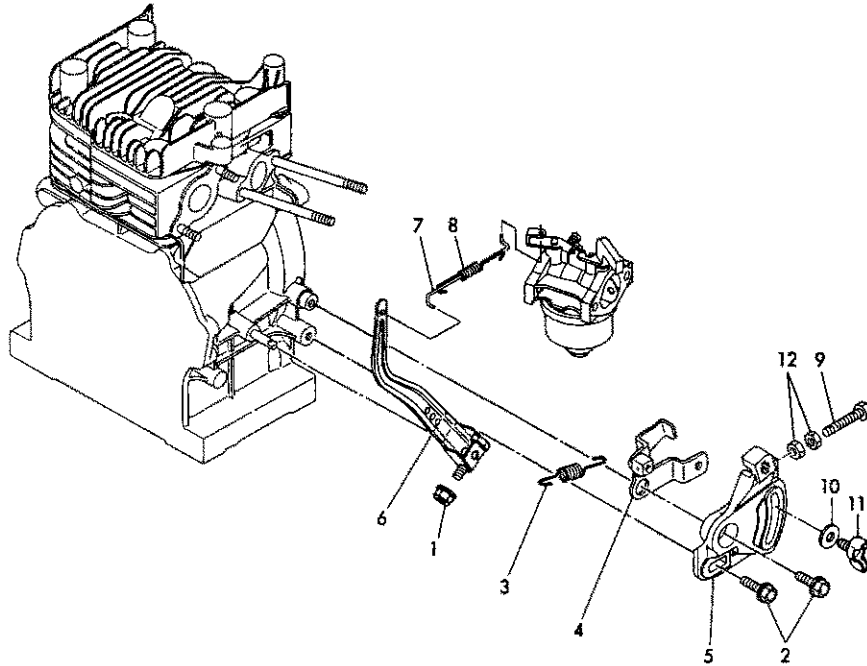
(13) GOVERNOR

(A) = WP-2000 (D) =
(B) = (E) =
(C) = (F) =

REF. NO.	LEV.	O	PART NO.	DESCRIPTION	Q'TY						
					(A)	(B)	(C)	(D)	(E)	(F)	
1	.		Y 160610-61100	SHAFT, GOVERNOR	1						
2	.		Y 160610-61300	SPINDLE, GOVERNOR	1						
3	.		Y 160610-61310	YOKE, GOVERNOR	1						
4	.		Y 160641-61600	GEAR ASSY, GOVERNOR	1						
8	.		Y 160120-76940	WASHER	1						
9	.		Y 160720-13730	WASHER 6	1						
10	.		Y 160611-66030	SPRING, RETURN	1						



14 CONTROL DEVICE



**1B15
(1B01)**

(14) CONTROL DEVICE

(A) = WP-2000 (D) =
 (B) = (E) =
 (C) = (F) =

REF. NO.	LEV.	O	PART NO.	DESCRIPTION	Q'TY					
					(A)	(B)	(C)	(D)	(E)	(F)
1	.	Y	263660-60002	NUT M6	1					
2	.	Y	264760-60202	BOLT M6 X 20	2					
3	.	Y	160610-66011	SPRING, REGULATOR	1					
4	.	Y	160650-66050	HANDLE ASSY, REGULATOR	1					
5	.	Y	160610-66100	BRACKET, REGULATOR	1					
6	.	Y	160610-66151	LEVER, GOVERNOR	1					
7	.	Y	160610-66201	LINK, THROTTLE	1					
8	.	Y	160710-66220	SPRING, TENSION	1					
9	.	Y	160611-66440	BOLT	1					
10	.	Y	160720-13730	WASHER	1					
11	.	Y	266450-60152	WING BOLT M6 X 15	1					
12	.	Y	267560-60002	LOCK NUT M6 PLATED	2					

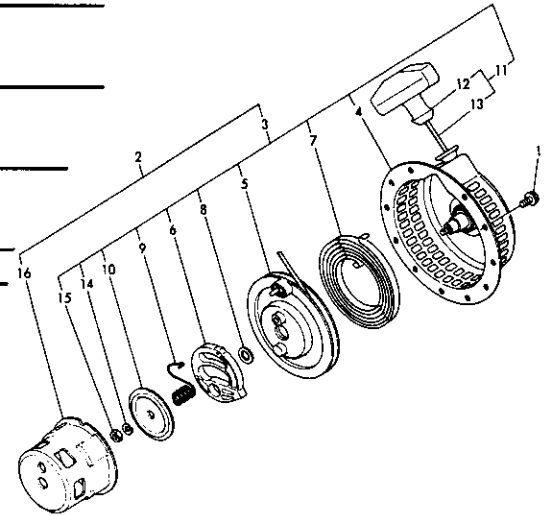
15 STARTER

**1B16
(1801)**

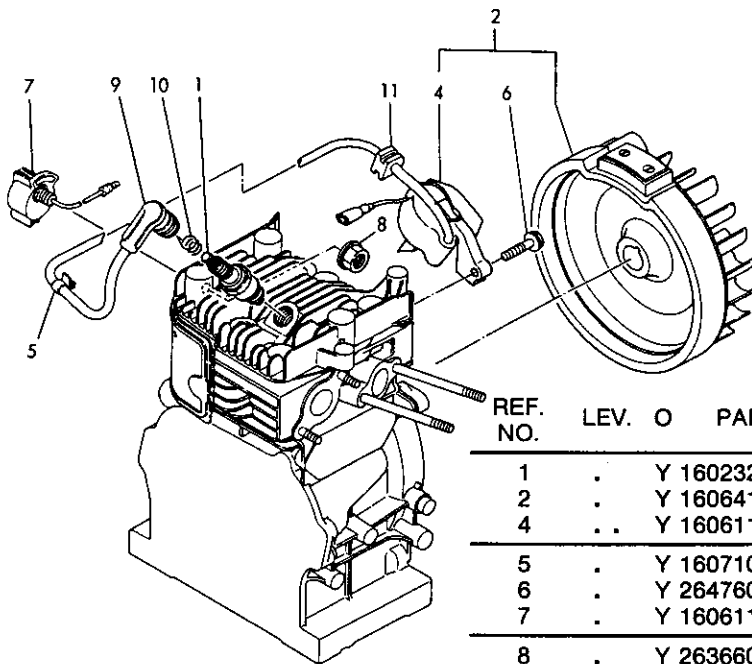
(15) STARTER

(A) = WP-2000 (D) =
(B) = (E) =
(C) = (F) =

REF. NO.	LEV.	O	PART NO.	DESCRIPTION	Q'TY					
					(A)	(B)	(C)	(D)	(E)	(F)
1	.	Y	261060-60122	BOLT M6 X 12 PLATED	3					
2	.	Y	160640-76050	STARTER ASSY, RECOIL	1					
3	..	Y	160640-76250	RE-COIL ASSY	1					
4	...	Y	160640-76510	CASE, STARTER	1					
5	...	Y	160610-76520	REEL	1					
6	...	Y	160610-76530	RATCHET	1					
7	...	Y	160710-76540	SPRING, SPIRAL	1					
8	...	Y	160610-76550	WASHER	1					
9	...	Y	160640-76560	SPRING	1					
10	...	Y	160610-76580	PLATE, FRICTION	1					
11	...	Y	160260-76610	ROPE ASSY, STARTER	1					
12	Y	160260-76620	KNOB	1					
13	Y	160260-76630	ROPE, STARTER	1					
14	...	Y	222170-60000	SPRING WASHER 6	1					
15	...	Y	267160-60002	NUT 6	1					
16	..	Y	160610-76590	PULLEY, STARTER	1					



16 STOP SWITCH & FLYWHEEL MAGNETO



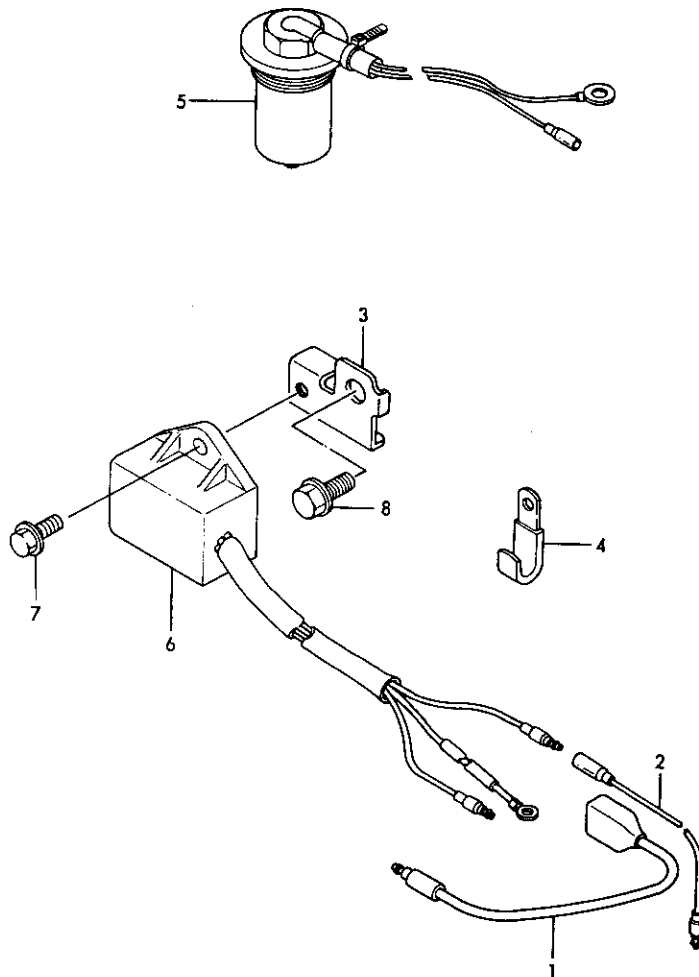
**1C01
(1801)**

(16) STOP SWITCH & FLYWHEEL MAGNETO

(A) = WP-2000 (D) =
(B) = (E) =
(C) = (F) =

REF. NO.	LEV.	O	PART NO.	DESCRIPTION	Q'TY					
					(A)	(B)	(C)	(D)	(E)	(F)
1	.	Y	160232-78010	PLUG, SPARK	1					
2	.	Y	160641-78060	MAGNETO ASSY	1					
4	..	Y	160611-78510	COIL, IGNITION	1					
5	.	Y	160710-78700	CLAMP, CORD	1					
6	.	Y	264760-60252	BOLT M6 X 25	2					
7	.	Y	160611-77250	SWITCH, STOP	1					
8	.	Y	263660-80002	NUT M8	1					
9	.	Y	160700-78040	CAP, PLUG	1					
10	.	Y	160700-78050	TERMINAL, PLUG	1					
11	.	Y	160700-78720	GROMMET	1					

17 OIL SENSOR



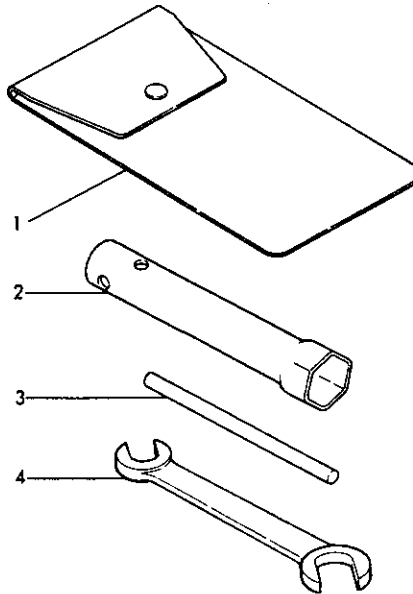
(A) = WP-2000 (D) =
 (B) = (E) =
 (C) = (F) =

**1C02
 (1B01)**

(17) OIL SENSOR

REF. NO.	LEV.	O	PART NO.	DESCRIPTION	Q'TY					
					(A)	(B)	(C)	(D)	(E)	(F)
1	.	Y	160671-78200	WIRE	1					
2	.	Y	160820-78200	WIRE	1					
3	.	Y	160671-78350	STAY, SENSOR UNIT	1					
4	.	Y	160710-78710	CLAMP	1					
5	.	Y	160975-78800	SENSOR, OIL LEVEL	1					
6	.	Y	160641-78810	SENSOR UNIT	1					
7	.	Y	261060-60122	BOLT M6 X 12	1					
8	.	Y	261060-80142	BOLT M8 X 14	1					

18 TOOL



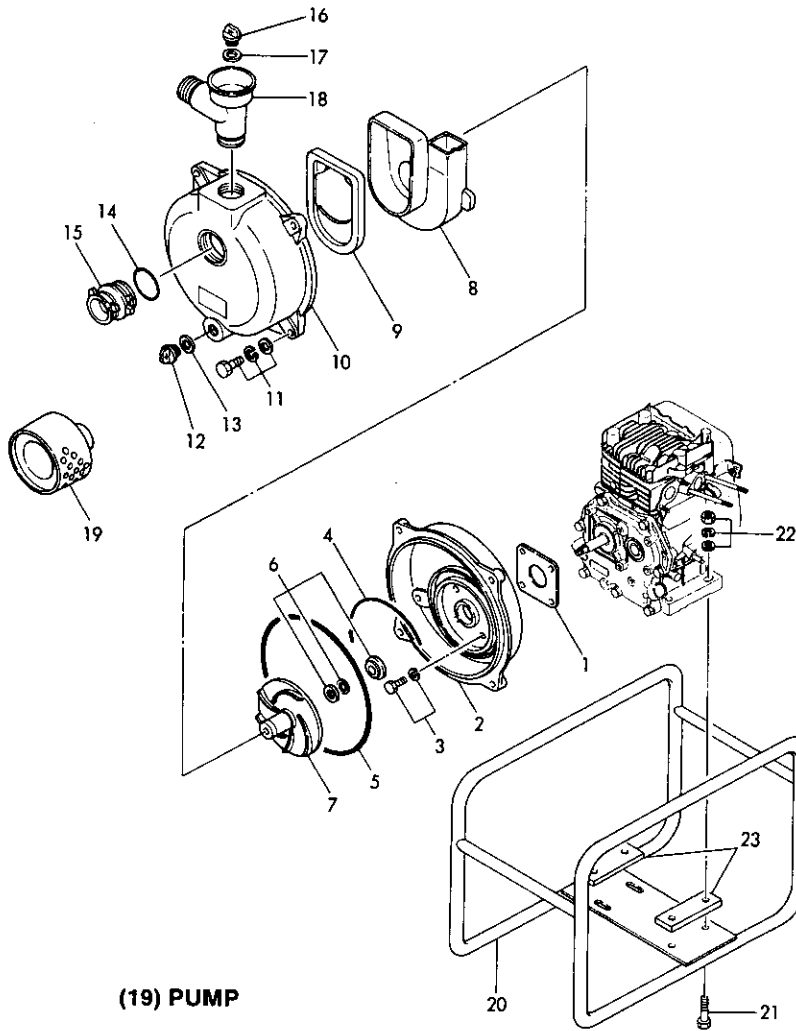
**1C03
(1B01)**

(18) TOOL

(A) = WP-2000 (D) =
 (B) = (E) =
 (C) = (F) =

REF. NO.	LEV.	O	PART NO.	DESCRIPTION	Q'TY					
					(A)	(B)	(C)	(D)	(E)	(F)
1	.		Y 160110-92610	BAG, TOOL	1					
2	.		Y 160120-92700	SPANNER, BOX	1					
3	.		Y 160110-92710	BAR	1					
4	.		Y 281101-00120	WRENCH 10 X 12	1					

19 PUMP



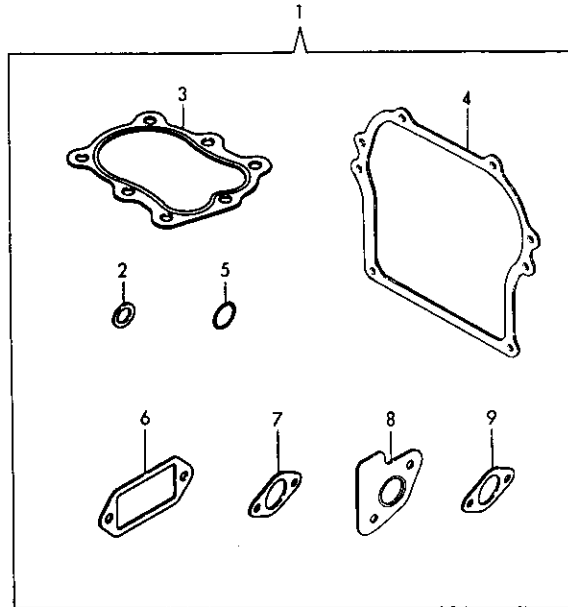
(A) = WP-2000 (D) =
 (B) = (E) =
 (C) = (F) =

**1C04
 (1B01)**

(19) PUMP

REF. NO.	LEV.	Q	PART NO.	DESCRIPTION	Q'TY					
					(A)	(B)	(C)	(D)	(E)	(F)
1	.	Y	160664-95110	GASKET, CASING	1					
2	.	Y	160664-95120	CASING	1					
3	.	Y	160664-95130	BOLT, CASING	4					
4	.	Y	160664-95140	GASKET, CASING	1					
5	.	Y	160664-95150	O-RING, CASING	1					
6	.	Y	160664-95160	SEAL, MECHANICAL	1					
7	.	Y	160664-95170	IMPELLER	1					
8	.	Y	160664-95180	HOUSING	1					
9	.	Y	160664-95190	VALVE, STOP	1					
10	.	Y	160664-95200	COVER	1					
11	.	Y	160664-95210	BOLT, COVER	4					
12	.	Y	160664-95220	DRAIN CAP	1					
13	.	Y	160664-95230	GASKET, CAP	1					
14	.	Y	160664-95240	O-RING, HOSE NIPPLE	1					
15	.	Y	160664-95250	HOSE NIPPLE	1					
16	.	Y	160664-95260	CAP, DELIVERY	1					
17	.	Y	160664-95270	GASKET, DELIVERY	1					
18	.	Y	160664-95280	BEND, DELIVERY	1					
19	.	Y	160664-95290	STRAINER	1					
20	.	Y	160664-95300	BASE	1					
21	.	Y	160664-95310	BOLT, ENGINE	4					
22	.	Y	160664-95320	NUT, ENGINE	4					
23	.	Y	160664-95330	PLATE	2					

20 GASKET SET (OPTIONAL)



**1C05
(1B01)**

(20) GASKET SET (OPTIONAL)

(A) = WP-2000 (D) =
 (B) = (E) =
 (C) = (F) =

REF. NO.	LEV.	O	PART NO.	DESCRIPTION	QTY					
					(A)	(B)	(C)	(D)	(E)	(F)
1	.		Y 760641-92600	GASKET SET	1					
2	..		Y 104200-59170	GASKET	1					
3	..		Y 160611-01330	GASKET, CYL. HEAD	1					
4	..		Y 160610-01410	GASKET, COVER	1					
5	..		Y 243110-00180	O-RING 1A P-18.0	1					
6	..		Y 160610-03070	GASKET	1					
7	..		Y 160610-56150	GASKET	2					
8	..		Y 160610-13201	GASKET, SILENCER	1					
9	..		Y 160310-13200	GASKET, SILENCER	1					