

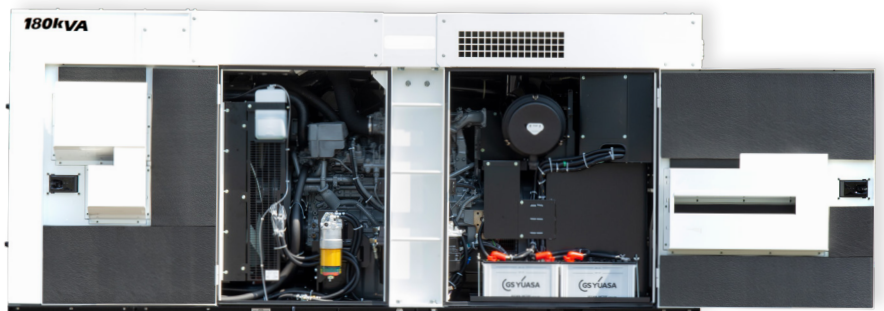


**RELIABLE EQUIPMENT FOR YOUR
CRITICAL MOBILE POWER NEEDS**

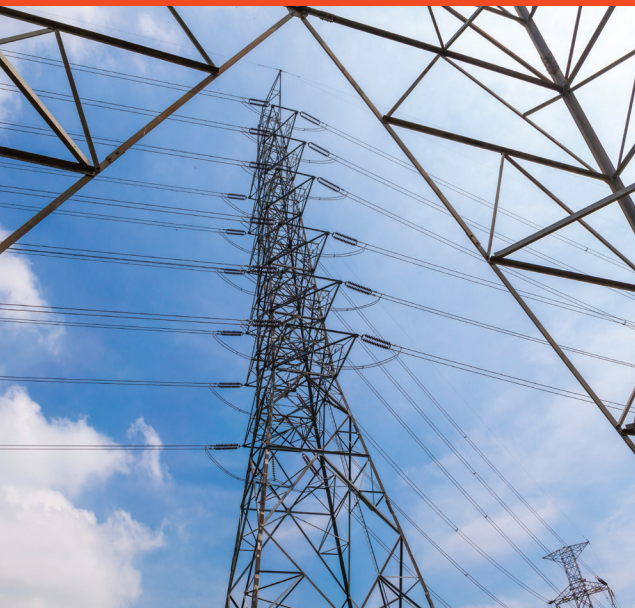




**ECHO SOUND-ATTENUATED, MOBILE GENERATORS COMBINE
DESIGN SIMPLICITY WITH UNCOMPROMISING STANDARDS OF
ENGINEERING AND MANUFACTURING EXCELLENCE.**



**DEPENDABLE POWER
WHEN YOU NEED IT MOST**



ECHO GENERATOR FEATURES:

- Rugged, fuel-efficient diesel engines.
- Sound-absorbing technology makes each model ultra-quiet.
- Lightweight and exceptionally compact to fit into tight spaces.
- Intuitive connection and operation for extended run times.
- All engines meet current EPA emission standards.
- Provides both single- and three-phase output.
- Single-phase 120/240V output available in all voltage settings.
- Voltage selector switch permits matching output to the load.
- Lockable switch protects against improper voltage change.
- Engine protections to help prevent damage to your powered equipment.
- Thermal relay opens main circuit breaker to protect generator in case of overload.
- Durable, all-weather outer enclosure with powder-coat paint and stainless steel fasteners provide protection against corrosion.
- Two-way tank valve for easy connection with auxiliary tanks.
(*Not available on DGK7F and DGK15F models)
- S.E.T. Smart Emissions Technology™ (Standard) on the DGK70F, DGK125F, and DGK180F.

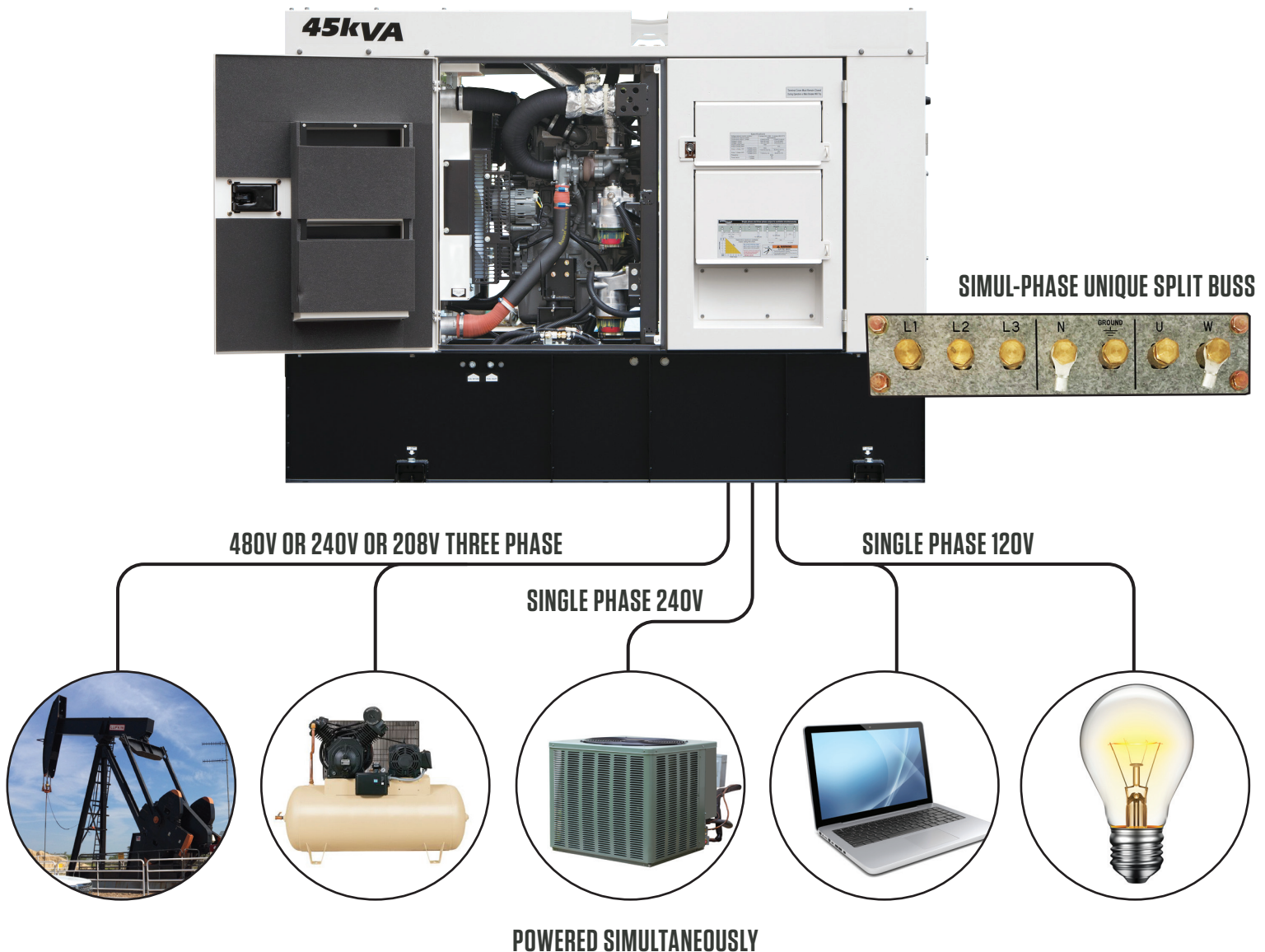




ECHO'S REVOLUTIONARY SIMUL-PHASE™ TECHNOLOGY DELIVERS DUAL-VOLTAGE, SINGLE-, AND THREE-PHASE POWER SIMULTANEOUSLY.

SIMUL-PHASE™ TECHNOLOGY

With Simul-Phase™ Technology, users can deliver dual-voltage single-phase and three-phase current from one generator, without the use of transformers- AT THE SAME TIME! Now you can supply 120V and 240V power to lights, air conditioners, electric tools, and other similar devices at the same time you supply three-phase 240V/480V power to motors that drive compressors, pumps, and similar equipment from one generator.



**DESIGNED FOR DEMANDING ENVIRONMENTS,
ECHO GENERATORS DELIVER POWERFUL
PERFORMANCE WITH MINIMAL SOUND.**

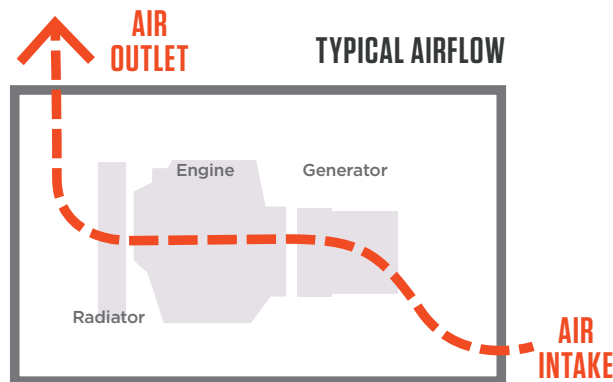
ULTRA-QUIET TECHNOLOGY

ULTRA-QUIET FEATURES:

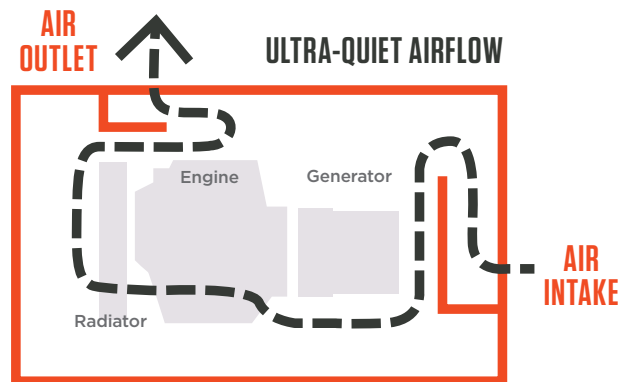
- Air dams and insulated panels re-direct cooling air, by doubling the length-of-travel, to minimize airflow noise without the need for power-robbing auxiliary fans.
- The enclosure features heavy-gauge door panels along with specially-engineered, sound-absorbing foam. The result is lower sound levels as well as increased unit rigidity.
- Specially tuned muffler and a longer exhaust pipe improve the balance of high and low noise frequencies.

DGK180F produces only 65dBA at full load. That is quieter than the level of sound produced by a typical household dishwasher!

OUR NUMBERS SPEAK FOR THEMSELVES: (MEASURED SOUND WITH NO LOAD AT 23 FEET)



**COOLING AIR PASSES NEARLY STRAIGHT THROUGH
CONVENTIONAL SOUND REDUCTION**



**REDIRECTED COOLING AIR DOUBLES LENGTH OF TRAVEL
LOWERS SOUND LEVELS DRAMATICALLY!**





MODEL	DGK7F	DGK14F	DGK15F <small>SIMUL-PHASE™ TECHNOLOGY</small>	DGK25F <small>SIMUL-PHASE™ TECHNOLOGY</small>
--------------	--------------	---------------	--	--

GENERATOR

Generator type	Revolving Field Brushless AC	Revolving Field Brushless AC	Revolving Field Brushless AC	Revolving Field Brushless AC
Continuous output, 60Hz, 3 phase	-	-	12kW (15kVA)	20kW (25kVA)
Continuous output, 1 phase	6.5kW	14kW	12kW	15kW (15kVA) (7.5kW(7.5kVA))
Standby output, 3 phase	Single Phase 7.2kW	Single Phase 14.7kW	13.2kW (16.5kVA)	22kW (27.5kVA)
Voltage, 3 phase (switchable)	-	-	240	240 [480V]
Voltage, 1 phase (switchable)	-	-	120,240	120, 139, 240 [277V]
Amps, 1 phase, 120V	54A	58.3A x 2	50.0A x 2 (zig-zag-w)	62.5A x 2 [31.3A] (zig-zag-w)
Amps, 1 phase, 240V	27A	58.3A	50.0A (zig-zag-w)	62.5A [31.3A] (zig-zag-w)
Amps, 3 phase, 240V	-	-	36.1A	60A
Amps, 3 phase, 480V	-	-	-	30A
Rated Frequency - Regulation	60Hz ± 0.25%	60Hz ± 0.25%	60Hz ± 0.25%	60Hz ± 0.25%
Rated speed, 60Hz	3600 rpm	1800 rpm	3600 rpm	1800 rpm
Sound level, no load at 23 feet	62 dB(A)	58 dB(A)	65 dB(A)	59 dB(A)
Sound level, full load at 23 feet	64 dB(A)	60 dB(A)	67 dB(A)	62 dB(A)
Paralleling Option	-	-	-	-

DIESEL ENGINE

Make, model and type	Kubota Z482	Kubota D1503, 3 cylinder	Kubota D902, 3 cylinder	Isuzu 4LE2T, 4 cylinder
Emission certification	US EPA Tier 4 Final	US EPA Tier 4 Final	US EPA Tier 4 Final	US EPA Tier 4 Final
Design features	Indirect injection, Naturally aspirated	Indirect injection	Indirect injection	Direct injection, Turbocharged
Displacement	29.23 cu. in. (1.479 L)	91 cu. in. (1.499 L)	54.8 cu. in. (0.898 L)	133 cu. in. (2.179 L)
Continuous rated output	11.3 hp (8.4kW) @ 3600 rpm	19.5 hp @ 1800 rpm	20.7 hp @ 3600 rpm	33 hp @ 1800 rpm
Starting system	Electric 12V DC	Electric 12V DC	Electric 12V DC	Electric 12V DC
Internal fuel capacity	9.5 gallons (36.4 L)	34.3 gallons (130 L)	9.62 gallons (36.4 L)	51.5 gallons (195 L)
Fuel consumption, full load	0.68 gal./hr (2.6 L/hr)	1.37 gal./hr (5.2 L/hr)	1.24 gal./hr (4.7 L/hr)	1.6 gal./hr (6.1 L/hr)
Fuel consumption, 3/4 load	0.55 gal./hr (2.1 L/hr)	1.00 gal./hr (3.8 L/hr)	1.03 gal./hr (3.9 L/hr)	1.2 gal./hr (4.64 L/hr)
Fuel consumption, 1/2 load	0.47 gal./hr (1.8 L/hr)	0.71 gal./hr (2.7 L/hr)	0.85 gal./hr (3.2 L/hr)	0.9 gal./hr (3.6 L/hr)
Fuel consumption, 1/4 load	0.36 gal./hr (1.4 L/hr)	0.50 gal./hr (1.9 L/hr)	0.66 gal./hr (2.5 L/hr)	0.7 gal./hr (2.5 L/hr)
Total coolant capacity	1.04 gallons (4.0 L)	2.3 gallons (8.8 L)	1.06 gallons (4 L)	2.6 gallons (10 L)
Total oil capacity / oil class	0.68 gallons (2.6L)	1.9 gallons (7.3 L)	0.95 gallons (3.6 L)	3.0 gallons (11.5 L)

PHYSICAL CHARACTERISTICS

Dimensions (L x W x H)	42.7" x 25" x 34.9" (1095 x 640 x 895 mm)	55" x 28" x 47" (1390 x 704 x 1204 mm)	51.6" x 25.2" x 35.2" (1310 x 640 x 895 mm)	63" x 33" x 55" (1603 x 850 x 1400 mm)
Unit dry weight	744 lbs. (335 kg)	1378 lbs. (625 kg)	926 lbs. (420 kg)	1929 lbs. (875 kg)

POWER ON. AND ON.



DKG45F SIMUL-PHASE™ TECHNOLOGY



DKG70F SIMUL-PHASE™ TECHNOLOGY



DKG125F/P SIMUL-PHASE™ TECHNOLOGY



DKG180F/P SIMUL-PHASE™ TECHNOLOGY

GENERATOR

Revolving Field Brushless AC	Revolving Field Brushless AC	Revolving Field Brushless AC	Revolving Field Brushless AC
36kW (45kVA)	56kW (70kVA)	100kW (125kVA)	144kW (180kVA)
27kW (27kVA) (13.5kW(13.5kVA))	42kW (21kW)	75 kW	108kW
40kW (50kVA)	61.6kW (77kVA)	137.5kW (110kVA)	158kW(198kVA)
240 [480V]	240 [480V]	208V, 240V, 480V	208V, 240V, 480V
120, 139, 240 [277V]	120V, 139, 240 [277V]	120V, 240V	120V, 240V
112A x 2 [56A] (zig-zag-w)	175A x 2 [87.5A x 2] (zig-zag-w)	313A x 2 (156A x 2, 480V)	450A x 2 (225A x 2, 480V)
112A [56A] (zig-zag-w)	175A [87.5A] (zig-zag-w)	313A (156A, 480V)	450A (225A, 480V)
108A	168A	301A	433A (500A @ 208V)
54A	84A	150A	216A
60Hz ±0.25%	60Hz ±0.25%	60Hz ±0.15%	60Hz ±0.15%
1800 rpm	1800 rpm	1800 rpm	1800 rpm
63 dB(A)	61 dB(A)	65 db	65 dB(A)
66 dB(A)	62 dB(A)	66 db	65 dB(A)
-	-	Yes	Yes

DIESEL ENGINE

Isuzu 4LE2X, 4 cylinder	Isuzu 4JJ1X 4 cylinder	ISUZU 4HK1X	ISUZU 6HK1
US EPA Tier 4 Final	US EPA Tier 4 Final	US EPA Tier4 Final	US EPA Tier 4 Final
Direct injection, Turbocharged, intercooler	Direct Injection, Turbocharged, Intercooler, DOC and SCR	Direct injection, Turbocharged, DOC and SCR	Direct Injection, Turbocharged, DOC and SCR
133 cu. in. (2,179 L)	183.0 cu. in. (2,999 L)	316.9 cu.in. (5,193L)	475 cu. in. (7,790 L)
59 hp @ 1800 rpm	95.2 hp (71.0kW) @ 1800 rpm (60Hz)	152.3 hp (113.6kW) @1800rpm (60Hz)	227.3 hp (169.5kW) @ 1800 rpm (60Hz)
Electric 12V DC	Electric 12V DC	Electric 12 V DC	Electric 24V DC
79 gallons (300 L)	105 gallons (400L) (DEF 7.4 gal.)	171.7 gal (650 L)	275 gallons (1042 L) (DEF 14.6 gal.)
2.8 gal./hr (10.7 L/hr)	4.4 gal./hr (16.6L/hr)	7.1 gal/hr (26.9L/hr)	10.3 gal./hr (39.1 L/hr)
2.1 gal./hr (8.2 L/hr)	3.4 gal./hr (13.1L/hr)	5.5 gal/hr (20.7L/hr)	7.8 gal./hr (29.6 L/hr)
1.5 gal./hr (5.9 L/hr)	2.5 gal./hr (9.5L/hr)	3.9 gal/hr (14.7L/hr)	5.6 gal./hr (21.3 L/hr)
0.9 gal./hr (3.8 L/hr)	1.8 gal./hr (6.4L/hr)	2.1 gal/hr (9.1L/hr)	3.6 gal./hr (13.8 L/hr)
2.9 gallons (11 L)	3.7 gallons (14.0L)	8.2 gal (31L)	8.7 gallons (33 L)
3.0 gallons (11.5 L)	4.0 gal. (15.0L)	6.2 gal (23.5 L)	10.5 gallons (40 L)

PHYSICAL CHARACTERISTICS

83" x 37" x 61" (2100 x 950 x 1550 mm)	102" x 37.5" x 69" (2590 x 951 x 1751mm)	120" x 48.8" x 59.1" (3,050 x 1,240 x 1,500mm)	143.7" x 52.8" x 87.8" (3650 x 1340 x 2230 mm)
2634 lbs. (1195 kg)	3898 lbs (1754kg)	6,592 lbs (2,990kg)	9370 lbs. (4250 kg)



877-986-7783



POWER ON. AND ON.

ECHO Incorporated
400 Oakwood Road, Lake Zurich, IL 60047



Authorized ECHO Generator Dealer